

## Table of Contents

Order Processing	
Terms & Conditions	0.01
Procedures	0.03
Service Orders	0.04
Product Specifications	
Framed Cabinetry	0.05
Frameless Cabinetry	0.16
Hinges	0.21
Drawers	0.22
Toekick	0.25
Overlays & Reveals	0.26
Wood Product	
Specifications	0.39
Summary	0.46
Warranty & Tolerances	0.47
Care & Cleaning	0.51
Alternative Materials	
Unique Characteristics	0.53
Touch up & Care Kits	0.54
Summary	0.56
Warranty	0.57
Care & Cleaning	0.58



## Terms and Conditions

### Pricing & Discounts:

All prices are LIST prices unless noted otherwise.  
All pricing and ordering is done with software.

### Payment Terms:

50% Deposit, balance due COD when delivered via Wellsford truck  
50% Deposit, balance due before shipping when delivered via long-haul service

### Service Charge & Returned Check Policy:

1-½% on all open, past due accounts, 3% on credit card payments  
Any returned or canceled check must be replaced with a bank check plus any bank fees.

### Order Placement & Quote request:

All orders and quotation requests must be made in writing on the appropriate forms.  
Phone orders will not be accepted.  
Wellsford does not offer a quoting service for complete jobs. Quotes are only generated for product that exceeds the capability of the QOE (Quick Order Entry) software catalog.

### Order Review & Acknowledgement:

We receive your order or quote request via QOE software. Your order will be reviewed for errors. A factory representative will call or email for clarification or questions.  
If you submit a floor plan, we will make all attempts to proof your order to eliminate errors. However, **the burden of errors rests with the dealer**. We will not be held liable for errors that are unnoticed. An order acknowledgement is sent when all questions are answered for your review and sign-off. **Your order will not be processed without signed approval**. An order confirmation will be sent within 24 hours of receipt of signed acknowledgement. Changes made after order confirmation will most likely incur an additional charge. After 48 hours, no changes or cancellations can be made without additional charges. Quotation requests will normally be returned within 24 hours of having any questions or problems addressed.

### Lead times:

The standard lead time is 8 - 10 weeks from the date of the order to the week of delivery. The estimated delivery week will be on your acknowledgement. Every attempt is made to have the delivery date meet your request date. A great majority of our orders are shipped as indicated on the acknowledgement, however, it is impossible to ship all orders every week as indicated on the acknowledgement. Any order that does not make the tentative delivery week will be given priority in the following week. You will be notified of an expected delay as early as possible. Delivery week updates are sent via email. The lead time will vary through the year based on incoming order volume.

### Material Delivery:

You may choose to pick-up any order from our factory (truck loading fee of \$100). Bring your own blankets or Wellsford offers well-wrap for an additional fee. Call to schedule a pick-up.  
Deliveries are made to warehouses and job sites.  
All deliveries are tailgate deliveries. You will be given a flat rate delivery charge from the factory. This flat rate charge applies to warehouse and job-site deliveries.  
A premium will be charged for deliveries to urban job sites.  
The dealer is expected to provide a minimum of two (2) capable adults to assist in the unloading.  
Drivers are not expected to transport the cabinetry into the warehouse or home.  
We do offer in-home delivery for a premium. Contact the factory for details.

## NOTES

## Procedures

### Order Placement

- All orders are to be submitted via Quick Order Entry (QOE).
- Every order acknowledgement must be signed and returned to place your order, start production, and begin lead time.
- **Lead time cannot start until we receive sign off on the order.**
- Orders without a deposit will be placed on hold after 2 weeks.
- Production slots cannot be reserved.
- **Be sure to review your acknowledgement. This is the material that you will receive.**
- Acknowledgement edits are done two ways. You can mark up the acknowledgement and send it back, or email a list.
- Once you have sent us your signoff, we will send you an Order Confirmation.
- Order confirmations provide you a projected delivery week, and a copy of your signoff.
- If you do not receive an order confirmation within 24 hours, please contact the factory!

### Order Processing

As your order is working its way through our processing department, we may contact you with additional questions. These typically do not delay the delivery date, but that remains a possibility. We ask that you give these questions your **prompt** attention so we can maintain the projected delivery date.

### Production update

**You will receive an update approximately half way through the lead time** that will advise you if your order is on track for the projected delivery week or if there has been a delay. We ask that you check in on the jobsite progress to make sure that your schedule is on track. If there is a delay at the jobsite that will cause a delivery delay, please let us know so we can adjust accordingly.

### Delivery Confirmation

This is sent via email up to a week prior to delivery, once we schedule the delivery day with you. This includes the invoice for the order, the delivery address, and a site contact to call when we are about ½ hour away from arrival.

### Back Order Notice

Occasionally, we will determine that an item does not meet our specifications during final inspection and loading of the truck. In these cases, **if** there is not enough time to bring the issue into spec, we will create a back order notice that will be adhered to the product. We also send a copy of this notice to your office. The notice will include an expected date of fulfillment.

### Delivery

We require a representative from the dealership to be present during the delivery. It is vital that you provide your approval of the product. We ask that you point out any damage at that time so that a decision can be made on how it will be corrected. This is the point at which ownership of the order transfers from Wellsford Cabinetry to the dealer. **Any damage issues raised after delivery will be the responsibility of the dealer.** If you are using a delivery service to provide final jobsite delivery, Wellsford's ownership of the order ends when delivered to your delivery service. The shipping paperwork will have a list of all items on the order and a place for your signature accepting the delivery in excellent condition.

### Warranty Claim Procedure

1. The dealer must visit the jobsite and view the complaint.
2. The dealer must send good pictures and a summary of the complaint to the factory and the sales representative.
3. The sales representative will make an appointment to visit the site with the dealer and assess the situation.
4. The factory will receive a report from the visit and make a determination on the warranty claim and the resolution.

### Service Orders

Wellsford is committed to service. Below is our standard lead time for ordering of parts needed to complete an order.

	Standard Service Order*	Expedite Order* (+25%)	Rush Order* (+50%)
Door / Drawer Front	14 Days	10 Days	7 Days
Cabinet Box	18 Days	11 Days	9 Days
Trim (Stock)	<b>10 Days</b>	6 Days	3-4 Days
Trim (Non-Stock)	14 Days	N/A	N/A

\*Please note that the above lead times are subject to material availability and product delivery. All lead times are based on production being complete and ready for shipment. Additional time must be allowed for transit from our factory to your location.

The QOE software has an "Order Type" global selection. Please be sure to specify the order type that you need for your service order.

## Wellsford Cabinet Construction

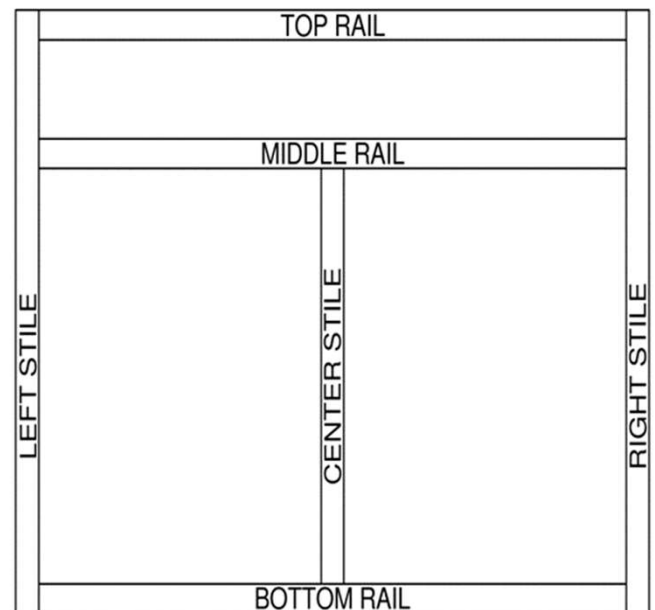
Wellsford Cabinetry has a wide variety of style options to suit your design needs. Most door styles are available in the wood species and finish of your choice. Among our standard offering of door styles you will find a variety of slab, mortise & tenon, and mitered door styles as well as custom doors for those special needs. Most are available in either framed (overlay, inset and traditional reveal) or frameless cabinet construction.

Those door styles that are available in framed cabinetry are available with 1/2", 1-1/4", or 1-3/8" overlay. Mortise & tenon styles are also available in plain inset, beaded inset and 3/8" partial inset. Many are available as French inset as well. Due to their nature, mitered door styles are not available as inset doors

You can customize your cabinetry selection and create your own style using the various framing and panel options as well as overlays, colors, wood species, cabinet construction type, etc. While there are some exceptions as noted, we feel you will be able to satisfy all your design requirements.

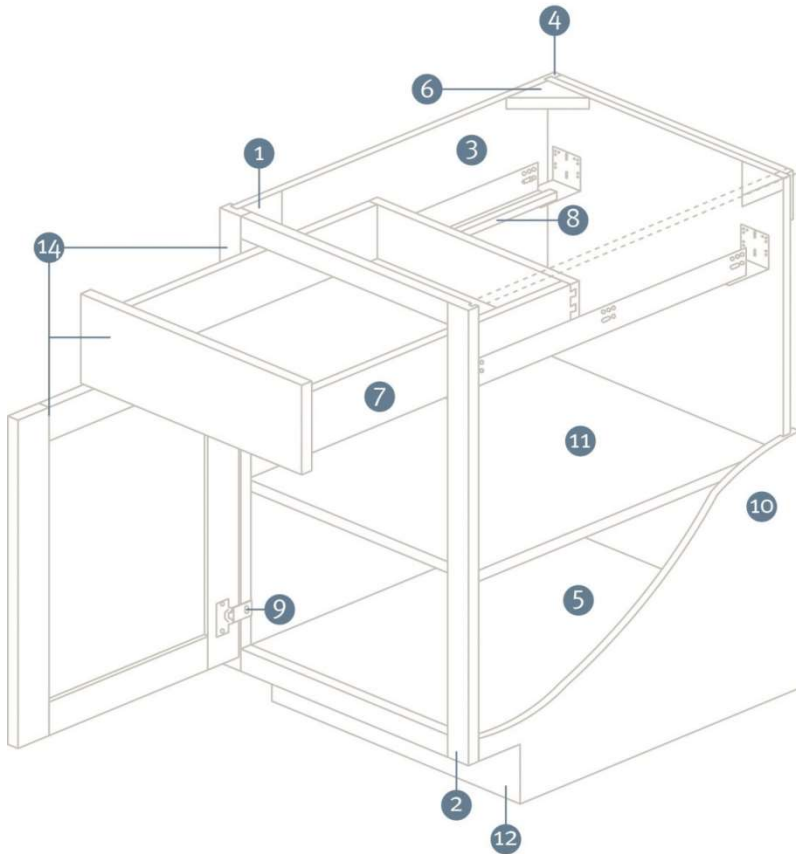
### FRAMED CABINETRY:

Face frames are constructed from 3/4" solid wood, 1-1/2" wide, using a blind mortise & tenon joint. There are some exceptions to framing width such as an arched valance top rail and an oven cabinet. Exceptions are noted in the cabinet specification pages. The minimum width for any non-beaded face frame stile or rail is 7/8". Beaded face frames have a 1-1/4" minimum. Face frame stiles on cabinets with 1" thick wainscot or frame and door side panels will increase to 1-3/4" wide.



## NOTES





**1.Box Construction:** Custom built in USA to design specific sizes and features with North American furniture grade plywood\*, wood joinery, and wood glue (no hot melt glues are used)

**2.Solid Hardwood Face Frame:** 1-1/2" solid wood with blind mortise and tenon construction

**3.Cabinet Sides:** 1/2" plywood\* concealed in dado joint (Optional 3/4" plywood)

**4.Full-Height Cabinet Back:** 1/2" captive in wood joinery with 1/2" removable ledger (1" total thickness at rails)

**5.Cabinet Floor:** 1/2" plywood\* captive in wood joinery to ensure your cabinetry stands the test of time (Optional 3/4" plywood)

**6. Corner Block Braces:** 3/4" plywood wood for additional square reinforcement

**7. Premium Drawer box:** 5/8" 4-sided dovetail box with 1/4" captured plywood bottoms, smooth sanded joinery, 1/8" rounded edges with natural clear coat finish after construction. The option of a 3/8" plywood bottom is available.

**8. Full-Extension, Soft-Close Drawer Glides:** Blum undermounted glide

**9. Soft-Close Hinges:** Blum concealed soft-close (Optional: Exposed hinge in various finishes)

**10. True Flush Finished Sides:** 3/4" with no visible joint along with multiple decorative side options

**11. Shelves:** Adjustable 3/4" veneer core plywood\* with wood edge banding

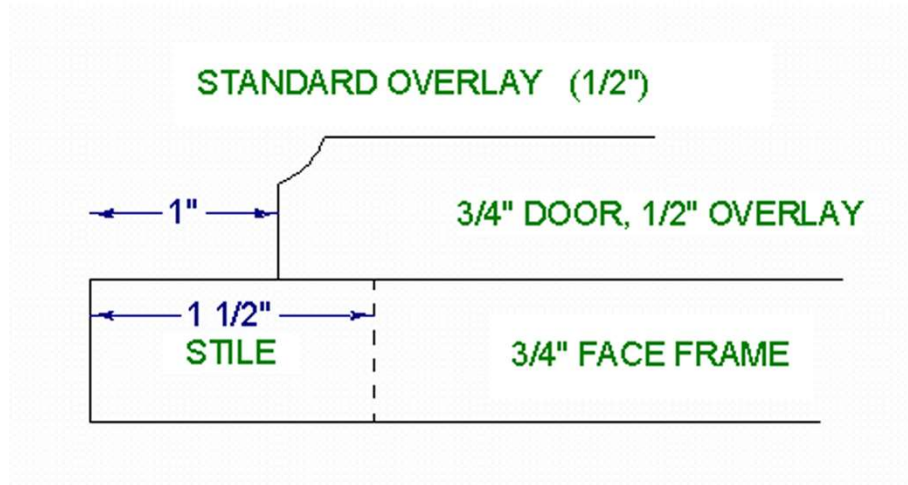
**12. Toe Kick:** 1/2" or 3/4" plywood\* and extends up to support cabinet floor

**13. Wall Cabinets:** 13" deep, plywood\* construction with finished bottoms to match doors.

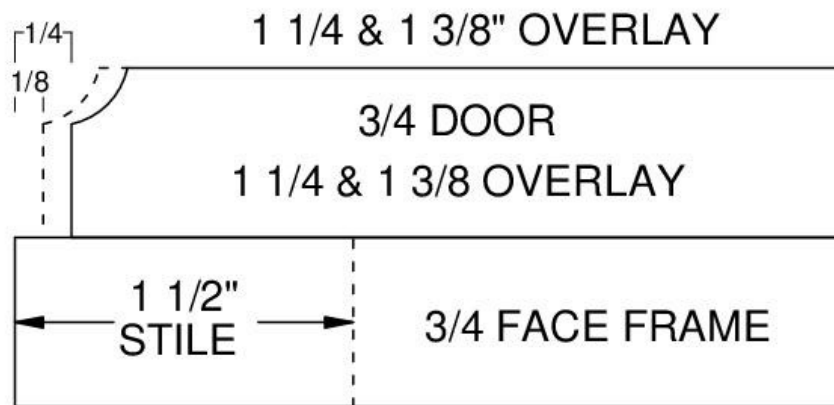
\*A particleboard option is available.

## OVERLAYS:

**1/2" overlay** – can use a knife hinge or a concealed hinge. We use a Blum concealed hinge which allow for 110 degrees of opening. The 1/2" overlay will show 1" of the face frame on all four sides, provided standard framing is used. This means that when cabinets are installed next to each other there will be two inches of face frame between the doors.



**1-1/4" and 1-3/8" overlay** - The door is 1 1/4" or 1-3/8" larger than the face frame opening in each direction. This overlay allows you to achieve a contemporary look while using a framed cabinet. The hinge is the Blum concealed hinge with 110 degrees of opening. These full overlay framed cabinets have the doors set down 1" from the top of wall and tall cabinets to allow for molding attachment. Spacing will be held according to the overlay. 1-1/4" overlay will maintain 1/4" gaps and 1-3/8" overlay will maintain 1/8" gaps.



Doors maintain the 1/8" or 1/4" reveal except at tops of wall and tall cabinets where 1" of the face frame is exposed to allow for mounting crown molding.

**\*Note for 1-3/8" overlay:** The hinge does not allow the door to open within itself and will cause a binding or rubbing situation in some cases. For example, when a cabinet is immediately adjacent to a wall or a deeper cabinet the 1/8" clearance is not enough for the door to open 90 without binding! We suggest either a 1/8" extended stile or 1-5/8" wide stile.

## PLAIN and BEADED INSET

3/4" thick face frame

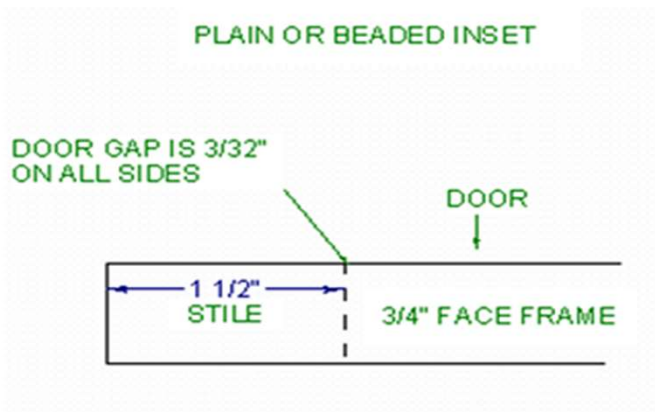
3/4" thick door and drawer front

Style specific profile on inside edge of face frame

Door and drawer fronts have style specific framing bead and panel raise.

Plain inset - plain, square edged face frame with the face of the door set flush with the face of the frame.

Beaded inset - inside edge of the face frame has a 1/4" or 3/8" bead. The face of the door is set flush with the face of the frame.

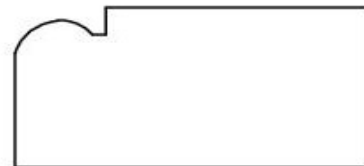


Bead sizes available for beaded inset:

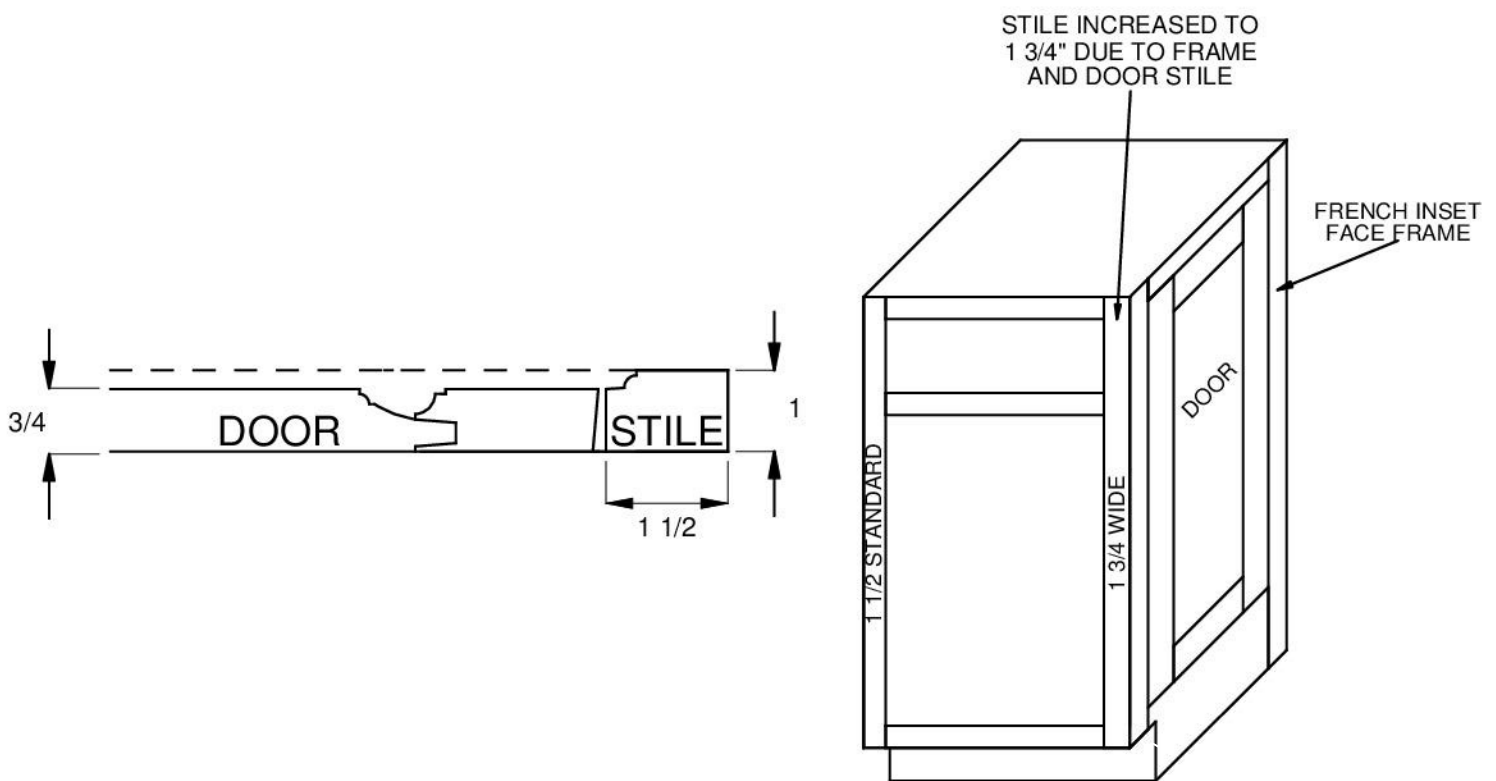
1/4" bead (most common)



3/8" bead



- 1" thick face frame
- 3/4" thick door and drawer front
- Any mortise & tenon door style available in inset is available in French Inset
- See p. 1.236 for available face frame inside edge profiles and door edge options

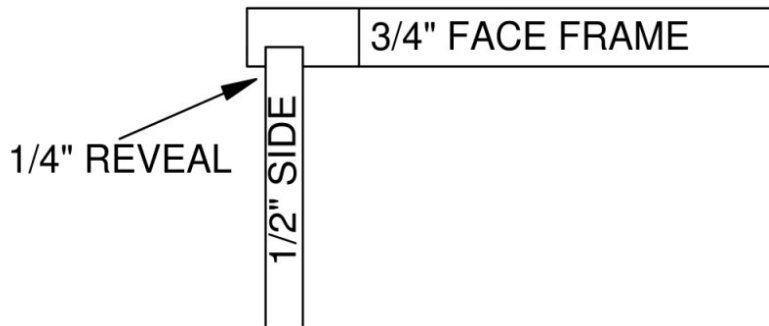


### Working with French Inset:

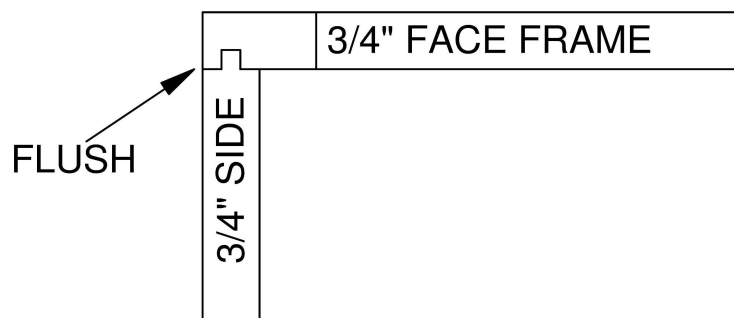
- If frame and door finished sides are selected, the face frame stile will increase to 1-3/4".
- Appliance rough in depths may need to be increased to maintain the French Inset look when using appliance panels or flush installation.
- Some appliance panels may conflict if the French Inset look is maintained. Please check this carefully. The face frame projects 1/4".
- Flush install of appliances needs to be looked at carefully to ensure the appliance door will not conflict with the projecting face frame.

**FRAMED CABINET CONSTRUCTION – 5 Finished Side Options**

1. Standard Finished or Unfinished Side

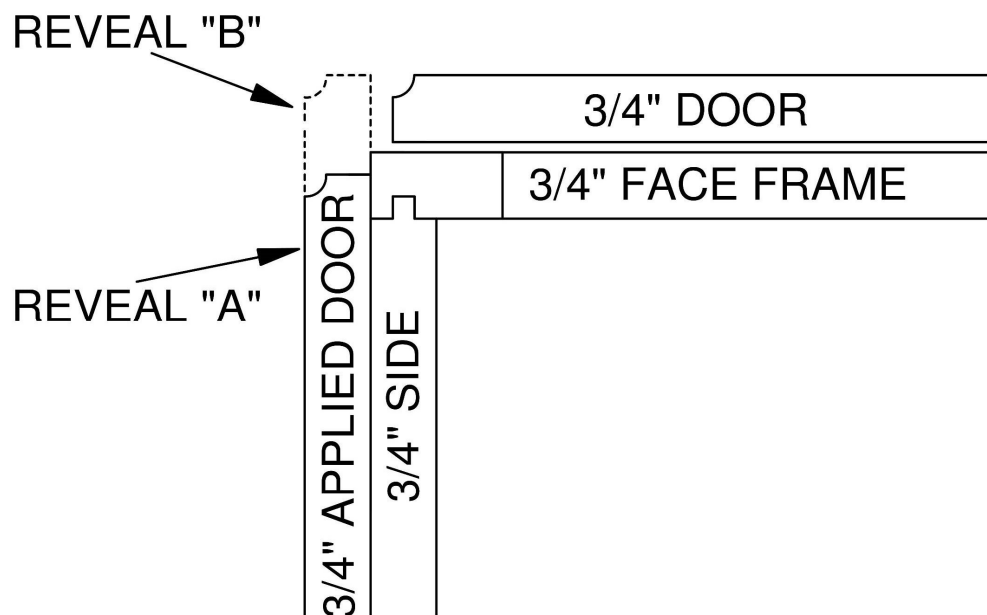


2. Flush Finished Side



### 3. Applied Door Side

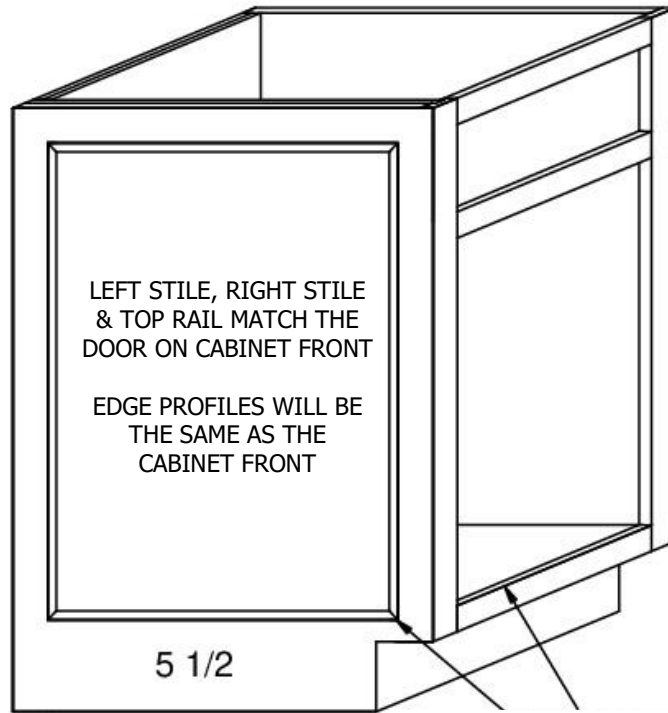
- Cabinet box will be constructed with a flush finished side.
- The prompt in QOE will ask for reveal A or reveal B when entered.
- Reveal A will match the reveals on the face.
- Reveal B will have the applied door width increased so the edge will be on the plane of the working door on the cabinet face.



## 4. Integral Wainscot Side

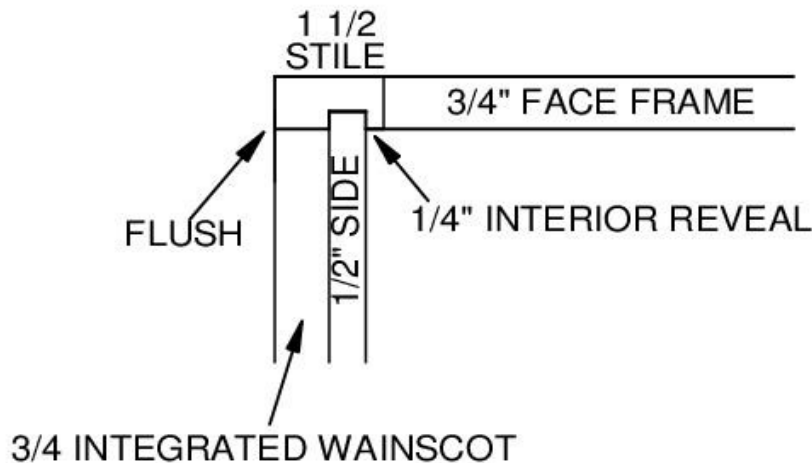
### INTEGRAL WAINSCOT - LEFT HAND SHOWN

FRAMING SIZES CAN BE MODIFIED AND MUST BE SPECIFIED UPON ORDER ENTRY



NOT AVAILABLE WITH MITERED DOOR DESIGNS

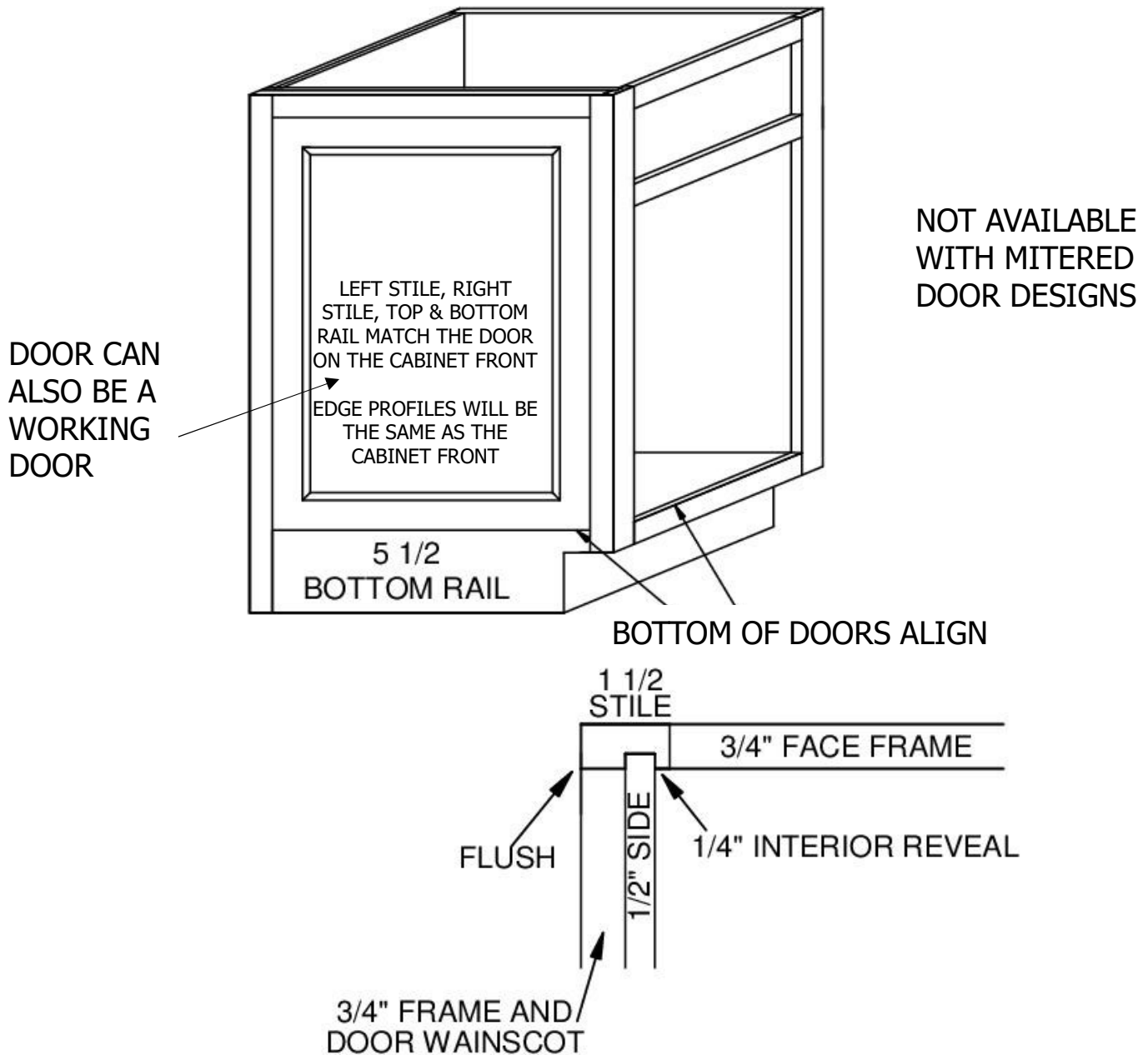
ALIGNMENT IS DEPENDENT UPON ORDER SPECIFICATION





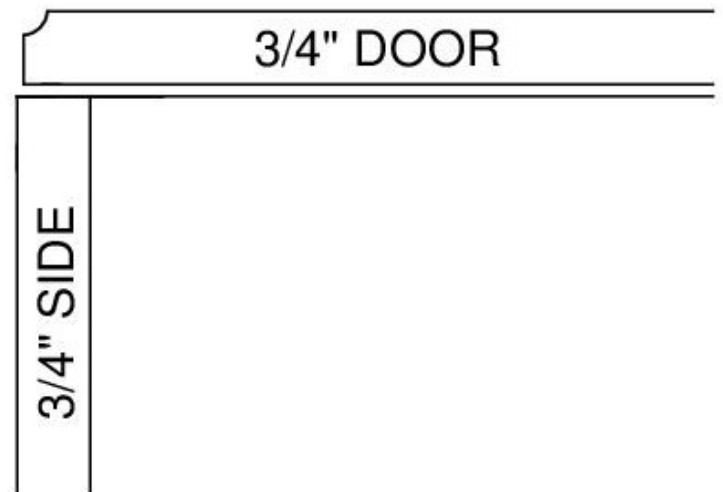
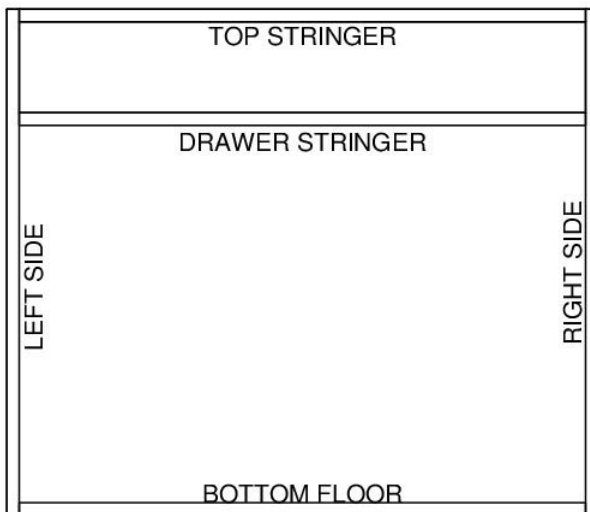
5. Frame and Door Wainscot Side

FRAME AND DOOR WAINSCOT -  
LEFT HAND SHOWN



## FRAMELESS CABINERY

Frameless cabinet construction, sometimes referred to as “full access”, is a European way of constructing cabinets. As the name would indicate, the cabinets do not have a face frame. The sides are  $\frac{3}{4}$ ” compared to those of framed cabinetry which are  $\frac{1}{2}$ ”. This adds to the stability of the cabinet. Backs are recessed  $\frac{1}{2}$ ”. If the cabinet has an interior pullout, the cabinet will be constructed with a flush back. Hinges are attached to the side of the cabinet box and the full overlay doors become the front of the cabinet, creating a clean seamless look. With no face frame, the sides are automatically flush. By eliminating the face frame, a frameless box offers easier access, wider drawers and slightly increased storage space.



## Frameless Cabinetry:

**1. Box Construction:** Custom built in our shop to design specific sizes and features with North American furniture grade plywood\*, wood joinery, wood dowels spaced every 5", and wood glue (no hot melt glues are used)

**2. Cabinet Sides, Floors, and Tops:** 3/4" plywood\*

**3. Full-Height Cabinet Back:** 1/2" captive in wood joinery with 1/2" removable ledger (1" total thickness at rails)

**4. Rails:** 3/4" x 3-3/4" wide stringers for added strength and stability.

**5. Premium Drawer box:** 5/8" 4-sided dovetail box with 1/4" captured plywood bottoms, smooth sanded joinery, 1/8" rounded edges with natural clear coat finish after construction. The option of a 3/8" plywood bottom is available.

**6. Full-Extension, Soft-Close Drawer Glides:** Blum undermounted glide

**7. Soft-Close Hinges:** Blum concealed soft-close, six-way adjustable hinge that is zero-clearance

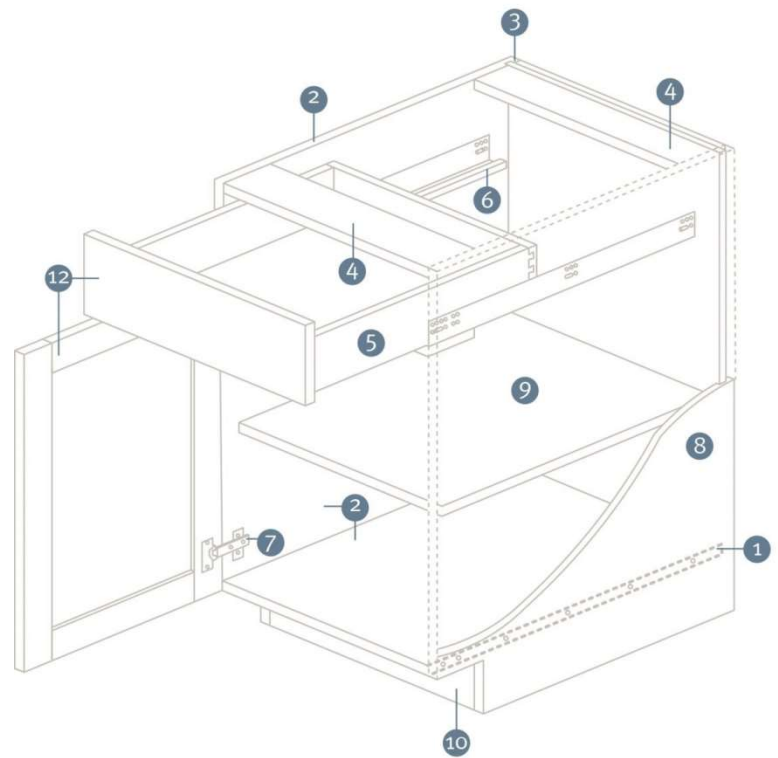
**8. True Flush Finished Sides:** 3/4" with no visible joint along with multiple decorative side options

**9. Shelves:** Adjustable 3/4" veneer core plywood\* with wood edge banding

**10. Toe Kick:** 1/2" or 3/4" plywood\* and extends up to support cabinet floor

**11. Wall Cabinets:** 13" inches deep plywood\* construction with finished bottoms to match doors

\* A particleboard option is available.

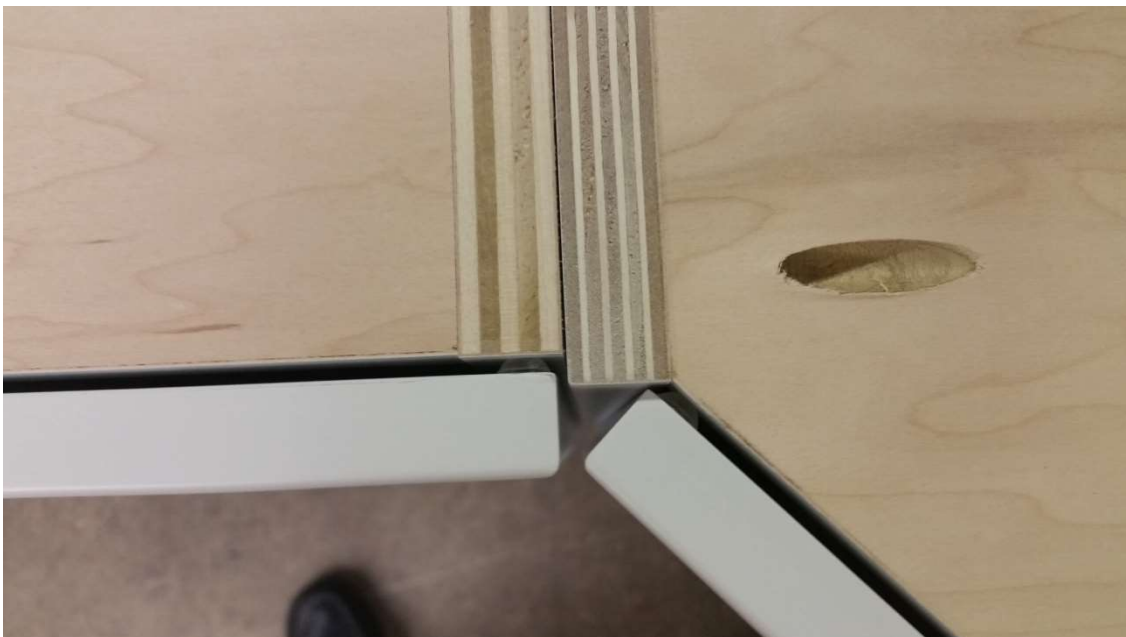
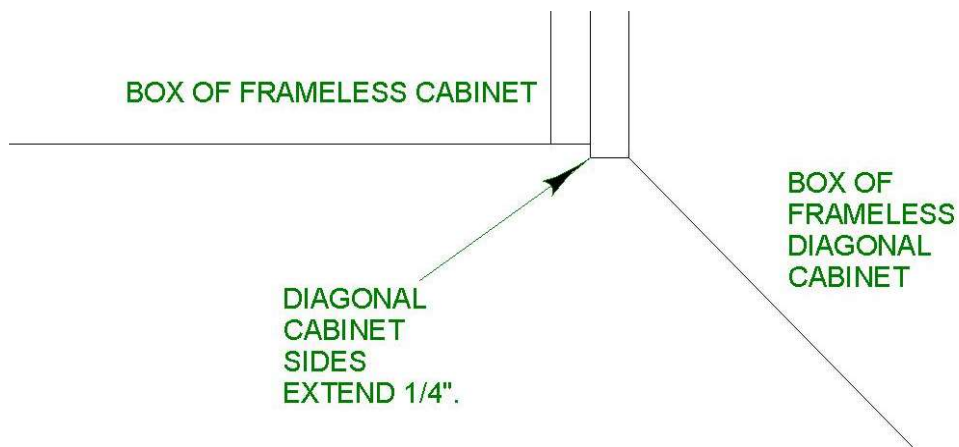


## FRAMELESS DIAGONAL CABINETS:

Wellsford diagonal frameless cabinets are made with the sides 1/4" longer than the sides of the adjacent cabinets. This is done to keep the diagonal door on the same plane. Finished sides are standard.

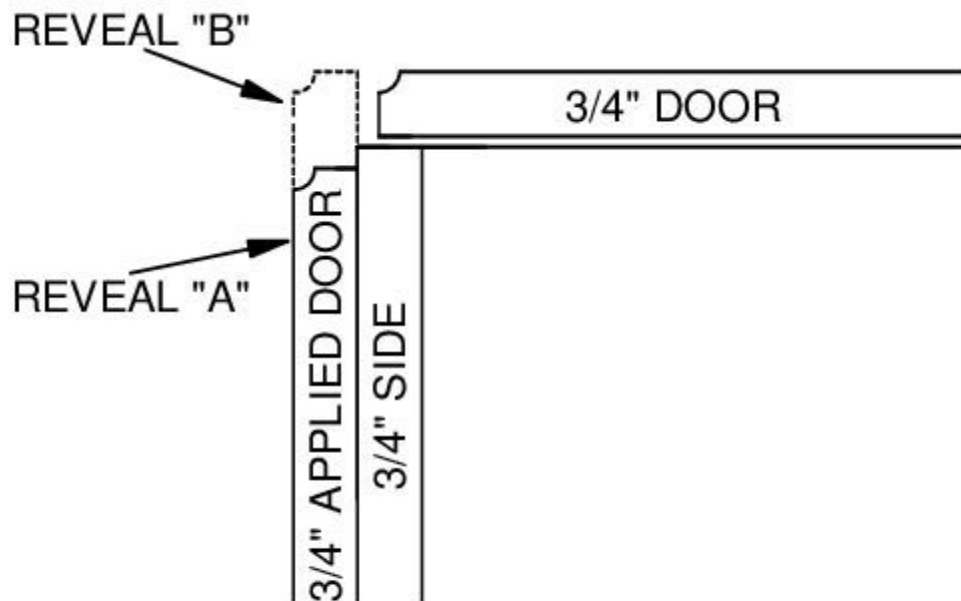
This will be found on WCA, WCD, WCS, BCFD, BSC, and BSCFD cabinets.

See the picture and drawing below for the proper installation.



## FRAMELESS CABINET CONSTRUCTION - with Applied Door Side

- The prompt in QOE will ask for reveal A or reveal B when entered.
- Reveal A will match the reveals on the face of the cabinet box.
- Reveal B will have the applied door width increased so the edge of the overlay will be on the plane of the working door on the cabinet face.



## NOTES

## HINGES

### Face Frame Hinges

Blum concealed soft-close



Hinge is pictured with a screw cover clip which is not standard but available at additional cost

### Inset Hinges



A Blum Euro concealed hinge with integrated soft close is standard.

### Frameless Hinges



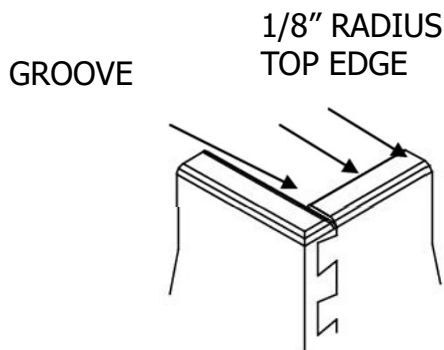
\*Exposed hinges are available by quote.

**Soft-Close Hinge:** Blum concealed soft-close, six-way adjustable hinge that is zero-clearance

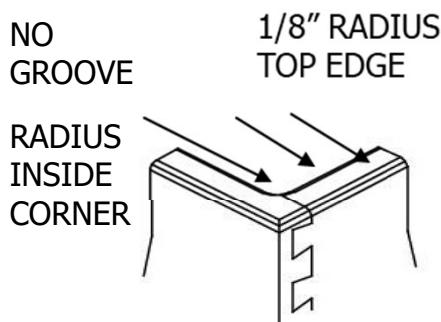
All the hinges shown above have a 110° opening.  
Hinge restrictor clips are available to limit opening to approximately 87°.  
Hinge restrictor clips cannot be used when the cabinet contains rollout shelves.

## DRAWER BOXES and HARDWARE:

We offer a 5/8" beech drawer as a standard. Soft maple, hard maple, cherry and walnut are available as an upgrade. It is four-sided in nature and uses dovetail construction. The bottom is 1/4" ply-core with a maple face and lauan back. The dovetail joints will be visible on the sides of the drawer. Depending on the door style, the drawer front is attached to the drawer box using one of 2 methods. It will either be mounted to the drawer box using screws, or with mounting clips that allow for adjustment. Matching 5-piece drawer heads usually require the use of mounting clips. The glide is a full extension undermount with soft close by Blum. The radius edges are machined before assembly and cause a 1/8" groove at the corners. Drawer box wood species and glide selection are specified in QOE.



A deluxe drawer is available as an upgrade. The deluxe drawer is also a 5/8" beech four-sided dovetailed drawer box (other wood species are available as an upgrade) same as above except the eased edges are machined *after* the drawer box is assembled, thereby avoiding the groove in the top of the drawer.





## To calculate the size of a drawer box:

**Width** – exterior - framed cabinetry – opening less  $3/8$ "  
plywood frameless – opening less  $3/8$ "  
particleboard frameless – opening less  $7/16$ "  
interior = exterior less  $1-1/4$ "

Minimum width to receive soft close drawer guides –  
plywood -  $5-3/8$ "w opening  
particleboard -  $5-5/16$ "w opening

**Height** – all construction –  
minimum height is  $2-1/8$ ";  
height increases in  $1/2$ " increments to  $14-7/8$ , then 15, 16, 17 & 18" high.

exterior – bottom drawer – opening less  $1-3/8$ ", then round down  
all others – opening less  $7/8$ ", then round down  
interior – exterior height less  $3/4$ "

**Depth** – all construction – OA depth less 3" on 3" increments

## DRAWER FRONTS:

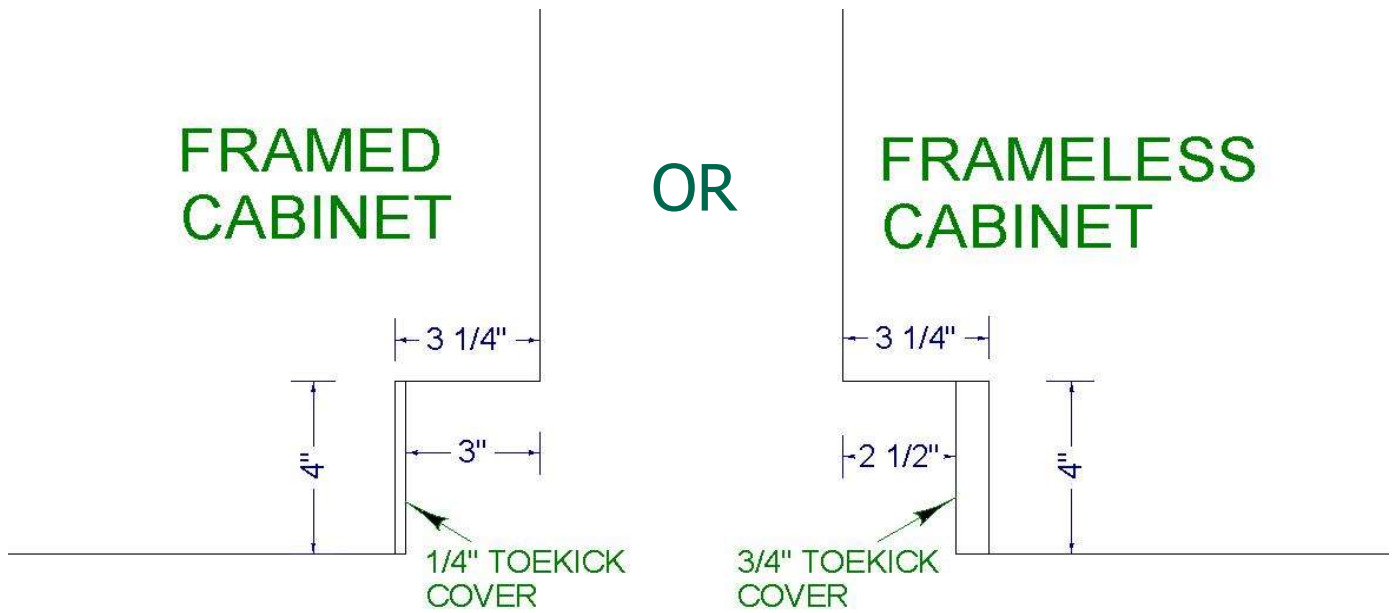
Most door styles have a default drawer front style and several optional styles which are shown on the specific door style page in Section 1. The default style will populate in QOE and you may need to change the selection to match the style desired.

When selecting a five-piece drawer front, the SDF should use "reduced top and bottom rails" framing width. This is especially necessary if a center raised panel is desired. Be sure to confirm that the decorative hardware selected will fit in the location desired. Please call the factory if this is in question.

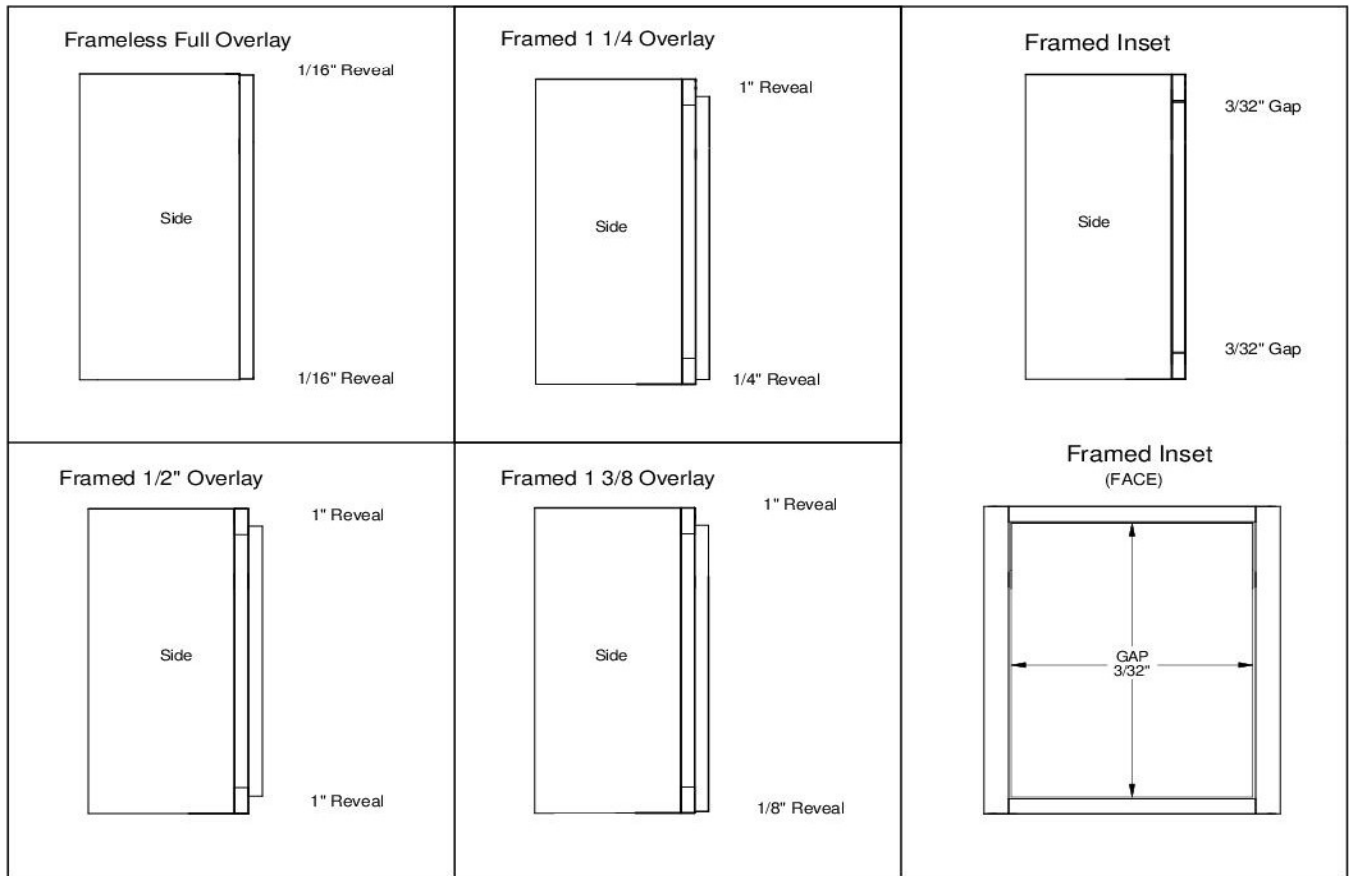
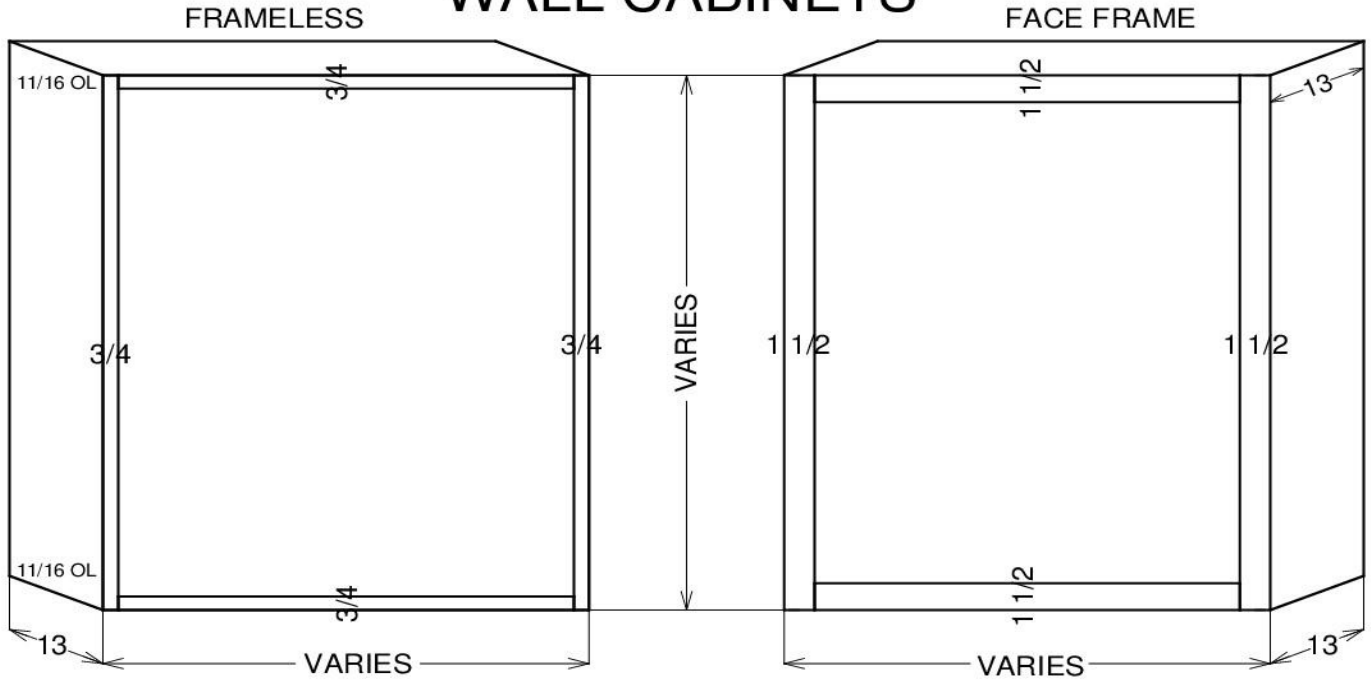
For LDFs, use "match door framing" framing width in QOE to ensure panel alignment at the bottom of the base cabinets.

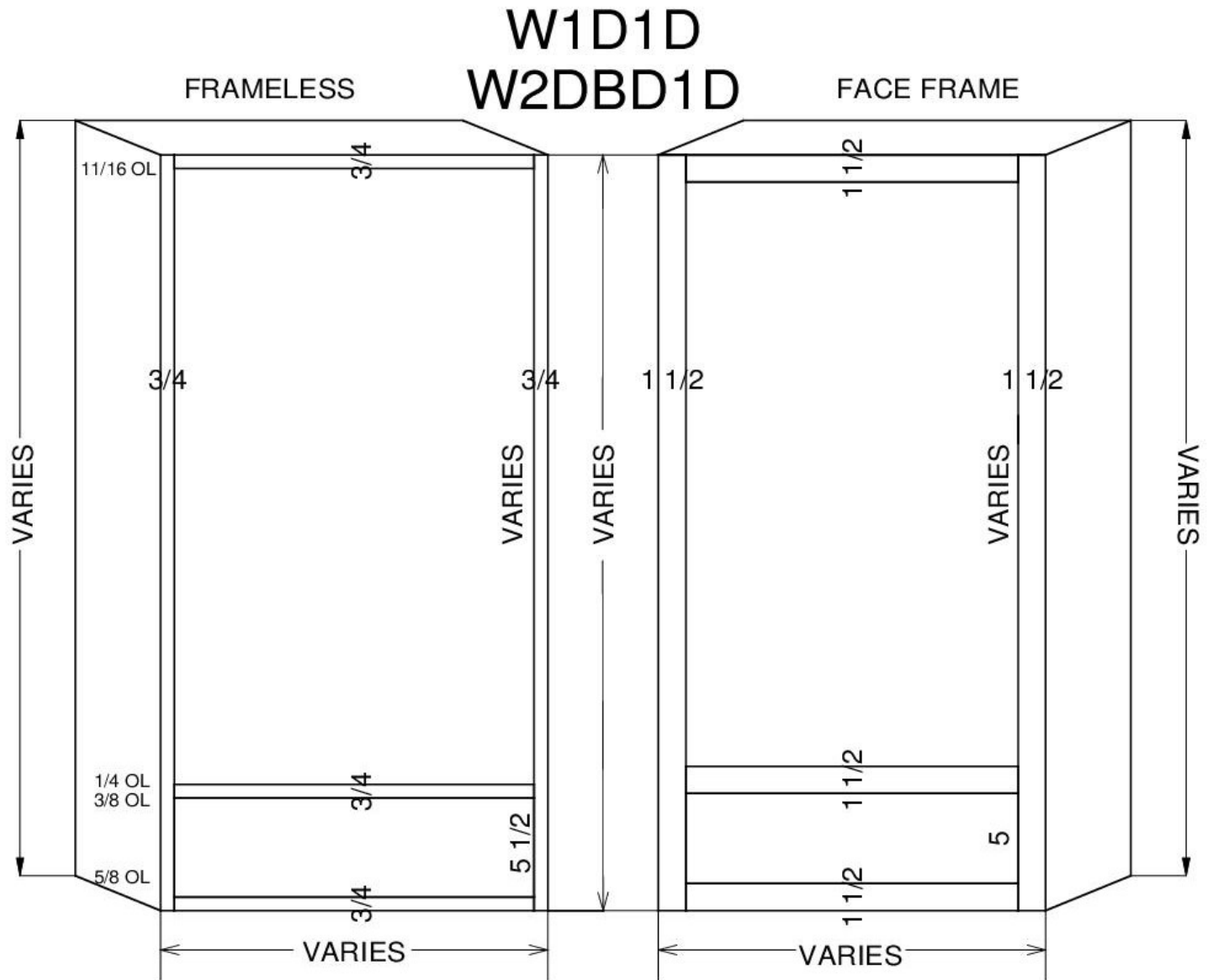
## NOTES

**TOEKICK DETAIL:**

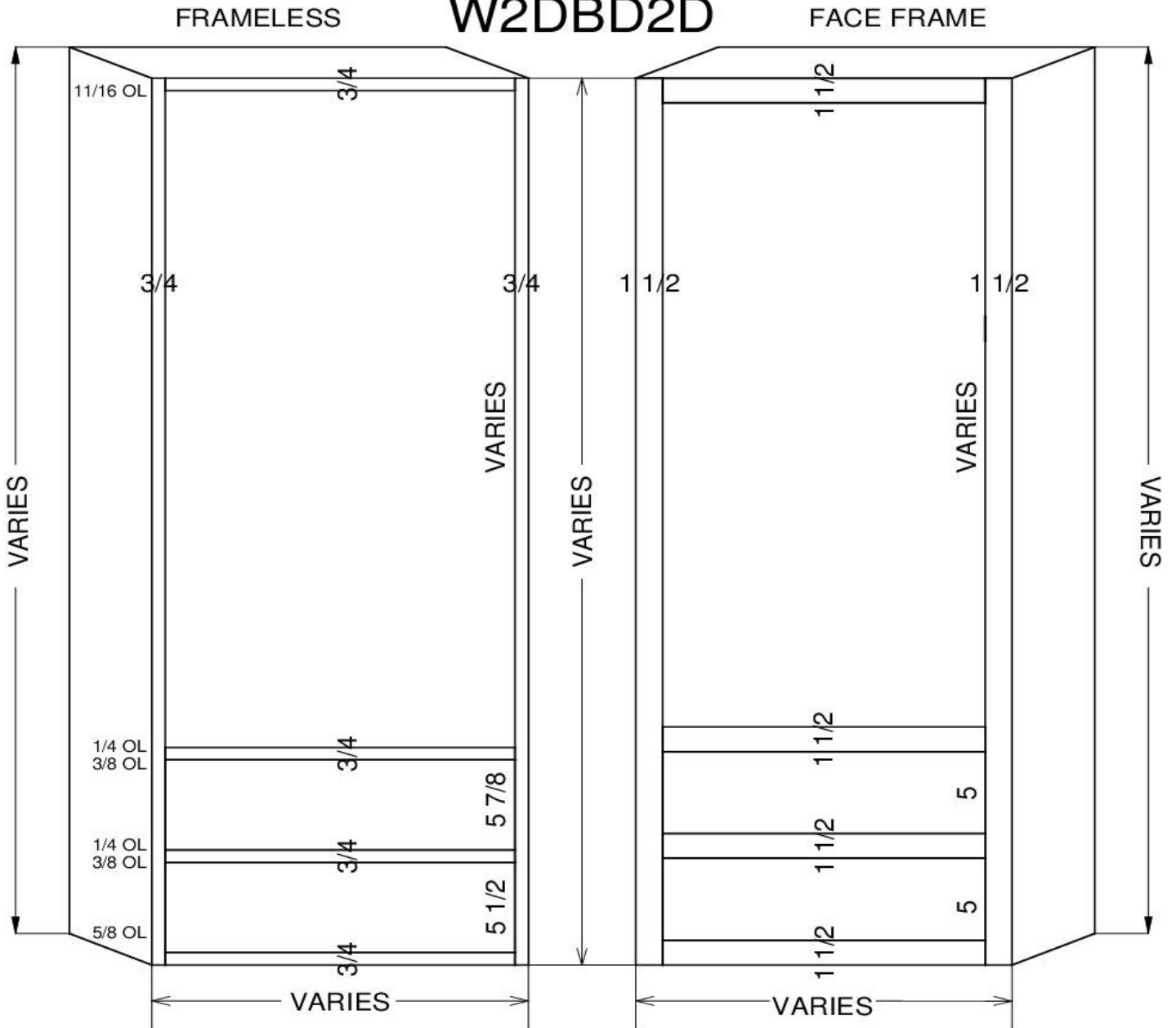


## WALL CABINETS





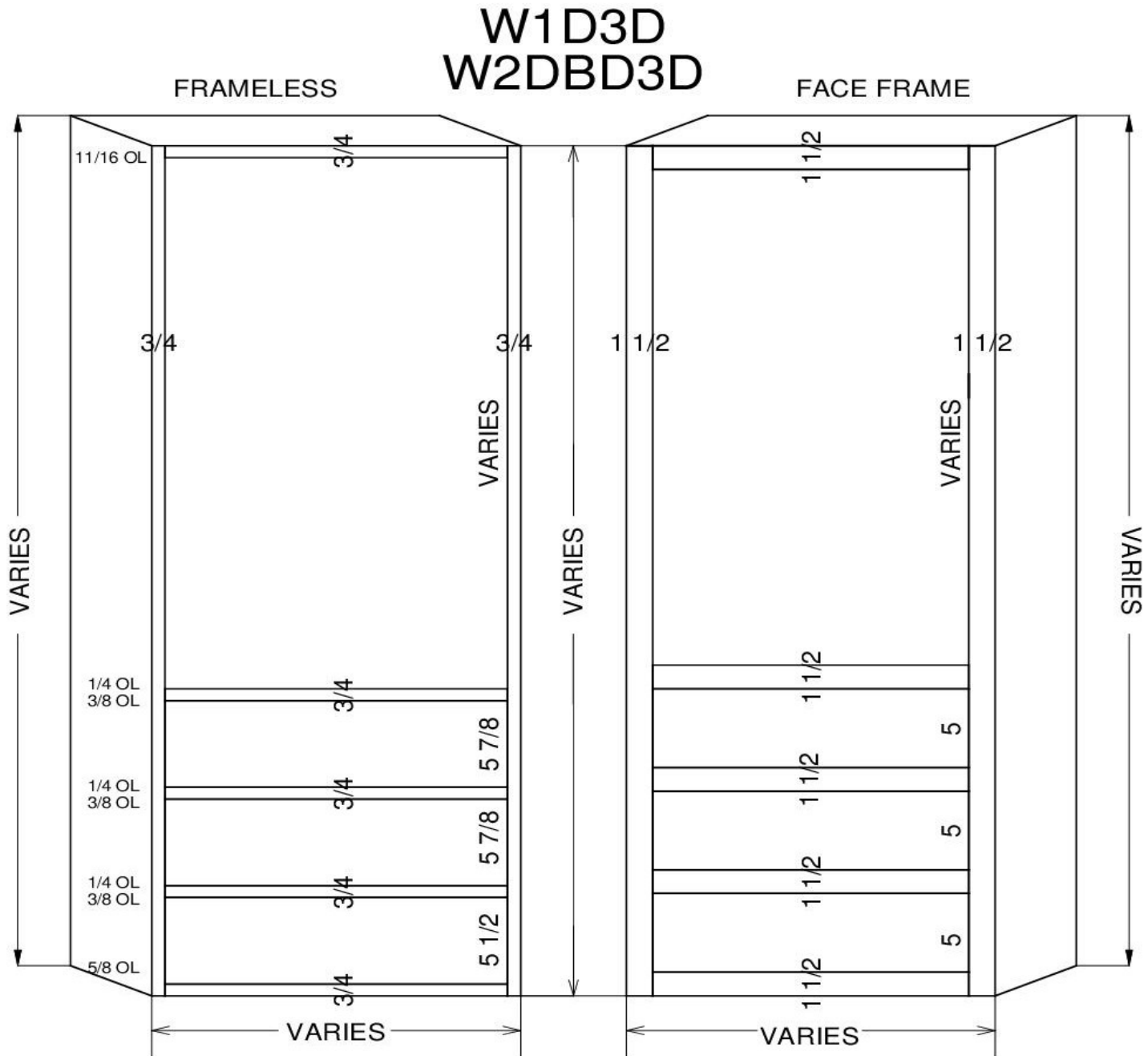
## W1 D2D W2 D B D2D



UNLESS OTHERWISE SPECIFIED DRAWER HEADS WILL BE EQUAL.

FULL OVERLAY – OPENINGS WILL CHANGE SLIGHTLY TO KEEP DRAWER HEADS EQUAL.

DOOR(S) CAN MATCH WALL CABINETS IF SPECIFIED.



UNLESS OTHERWISE SPECIFIED DRAWER HEADS WILL BE EQUAL.

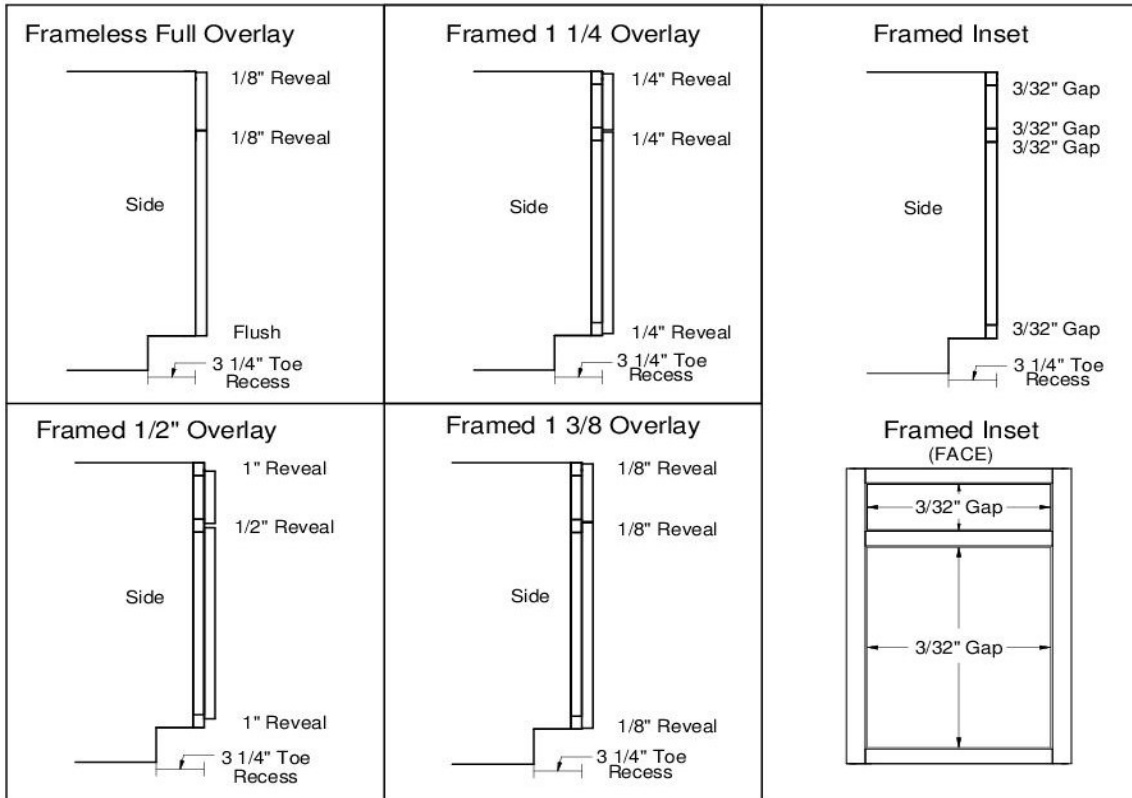
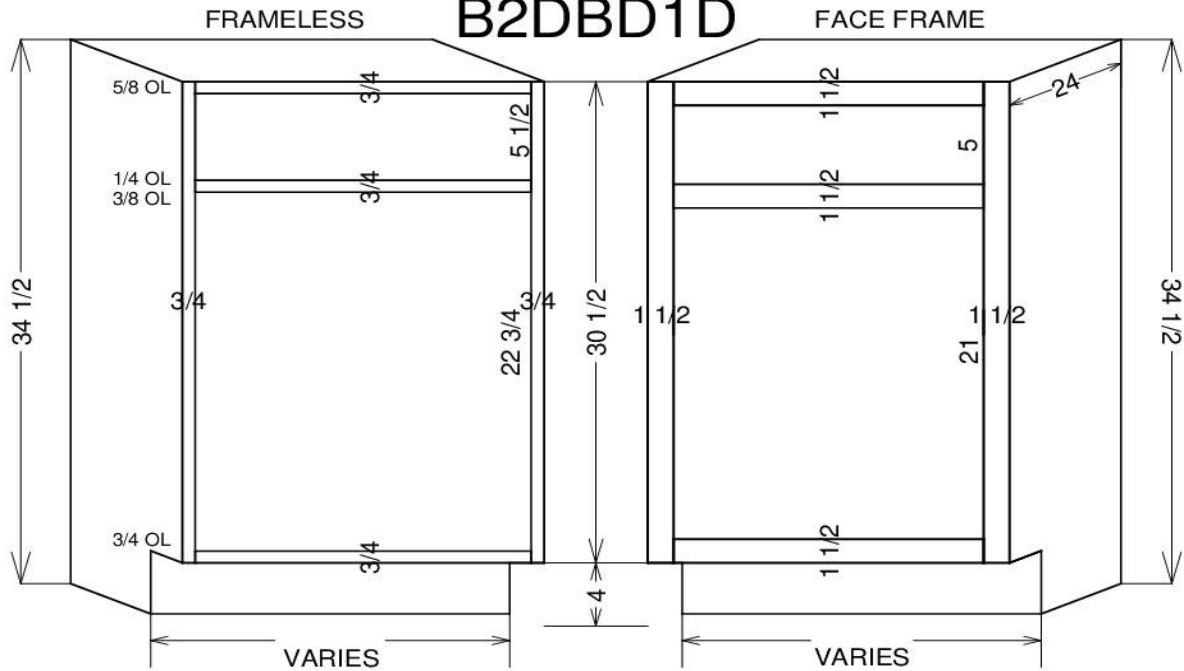
FULL OVERLAY – OPENINGS WILL CHANGE SLIGHTLY TO KEEP DRAWER HEADS EQUAL.

DOOR(S) HEIGHT CAN MATCH WALL CABINETS IF SPECIFIED.

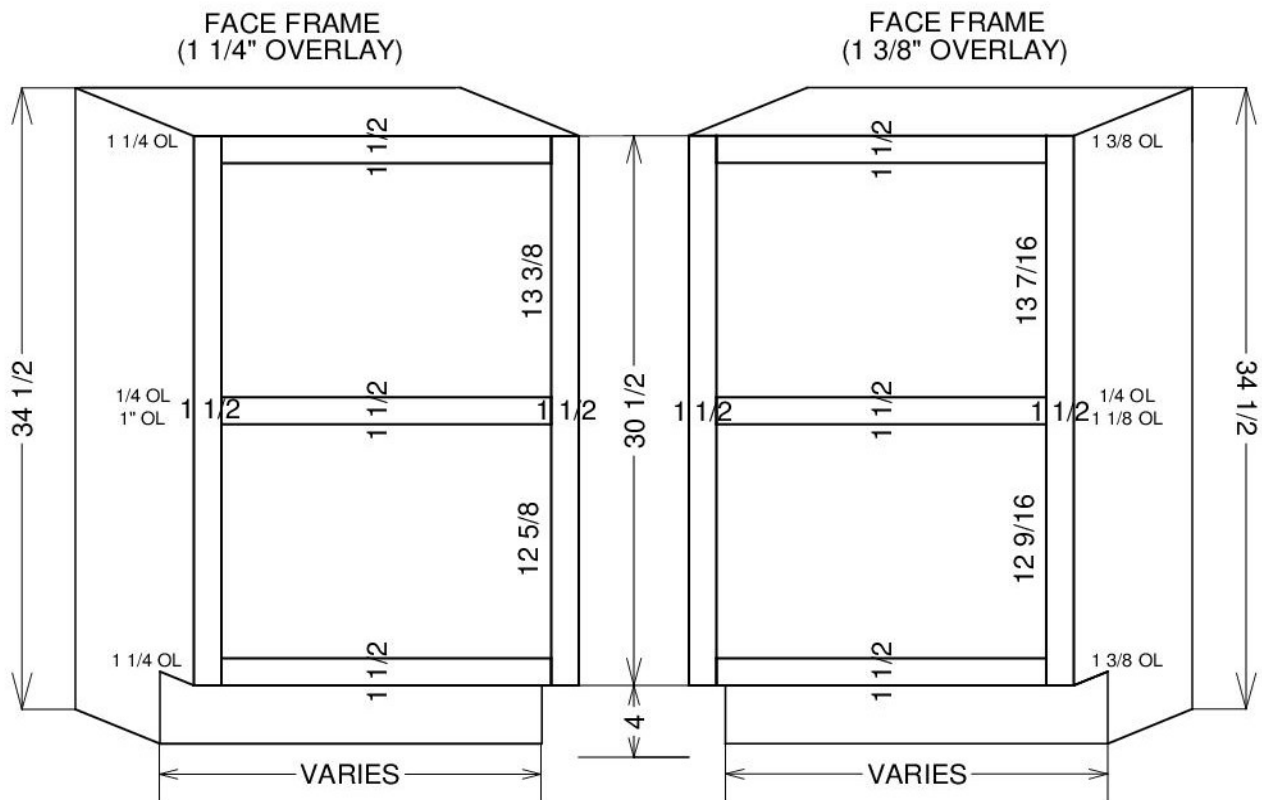
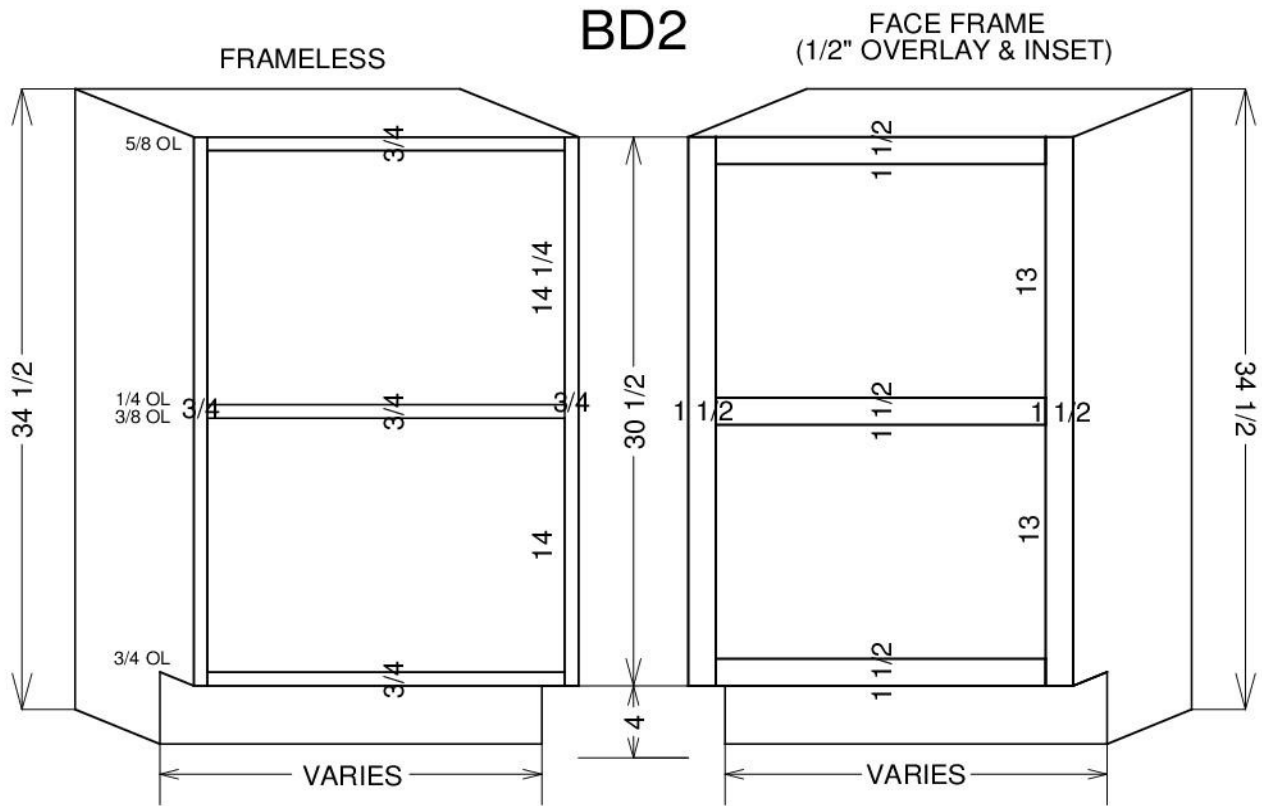
## BASE CABINETS

B1D1D

B2DBD1D





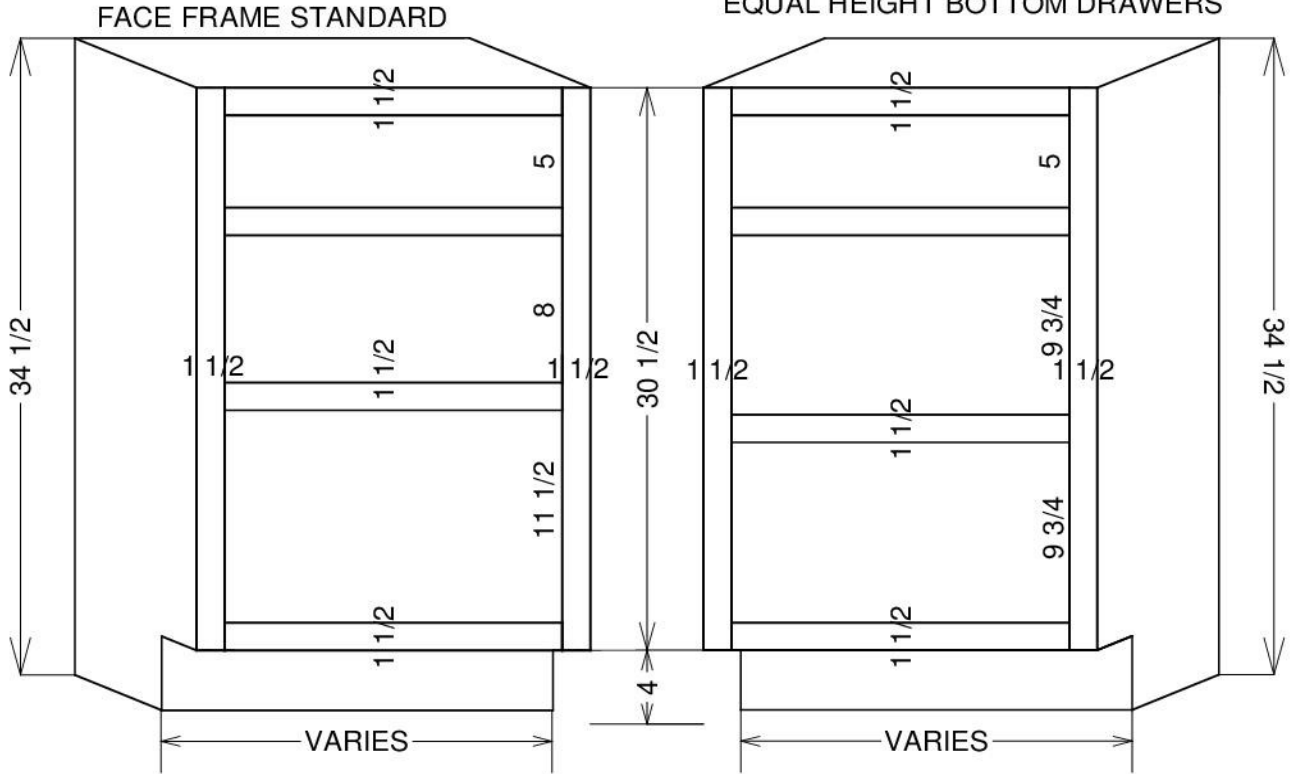


# General Information Product Specifications



## BD3

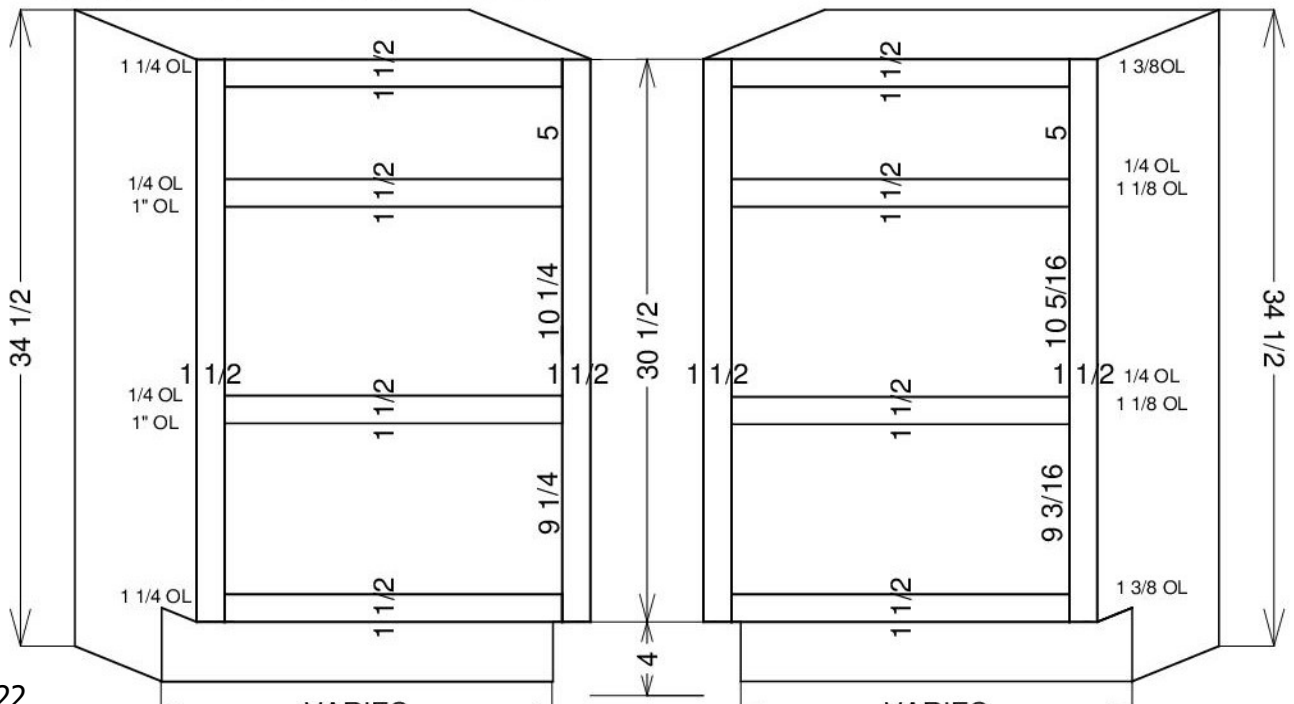
FACE FRAME  
(1/2" OVERLAY & INSET)  
EQUAL HEIGHT BOTTOM DRAWERS

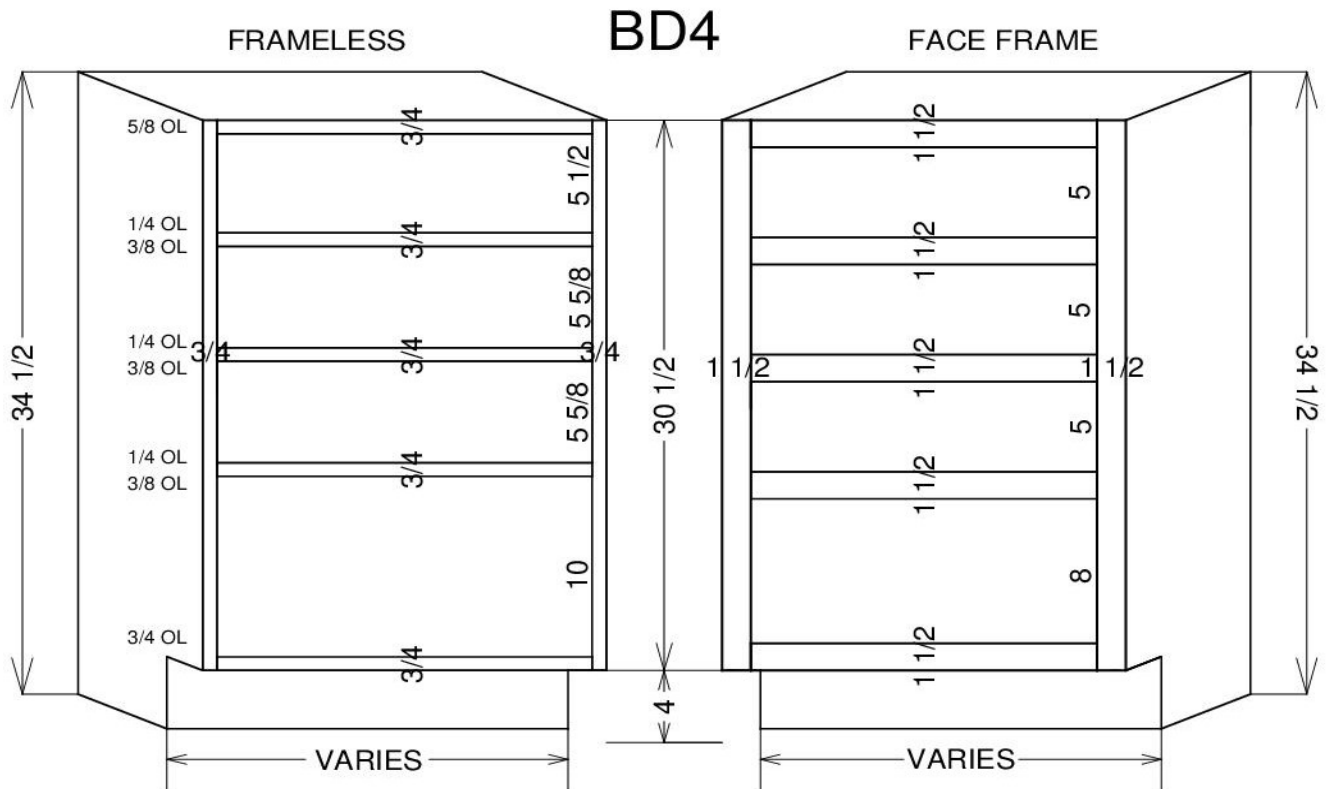
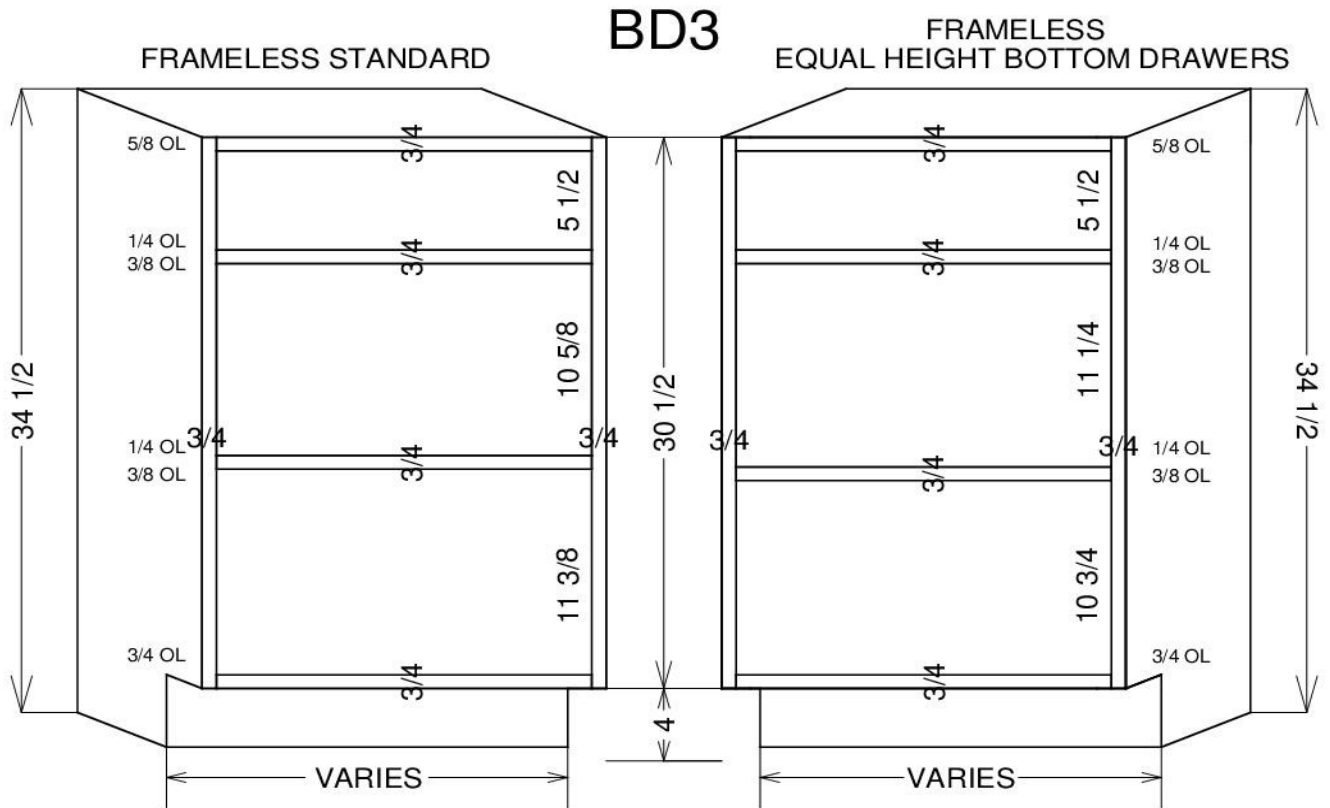


## BD3

FACE FRAME  
(1 1/4" OVERLAY)  
EQUAL HEIGHT BOTTOM DRAWERS

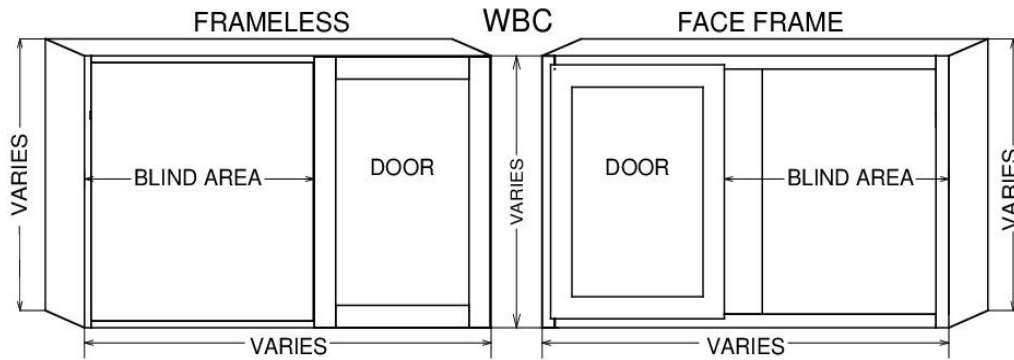
FACE FRAME  
(1 3/8" OVERLAY)  
EQUAL HEIGHT BOTTOM DRAWERS



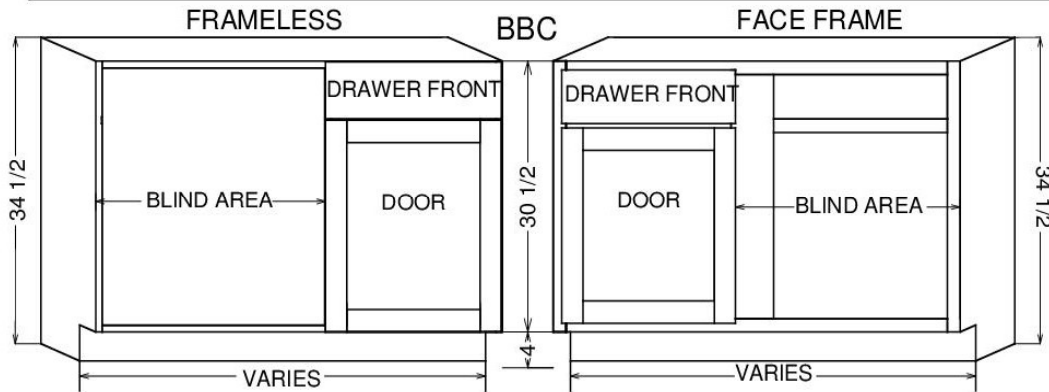


## NOTES

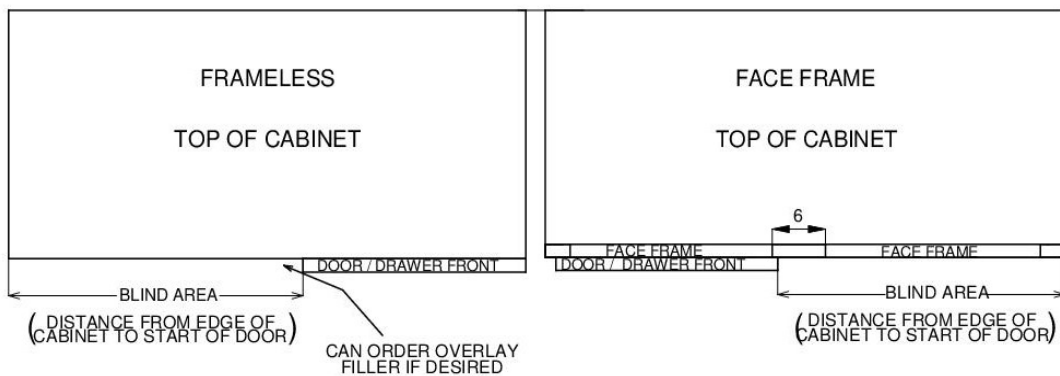
## BLIND CABINETS



"BLIND AREA" IS THE DISTANCE FROM THE EDGE OF THE CABINET TO THE START OF THE DOOR



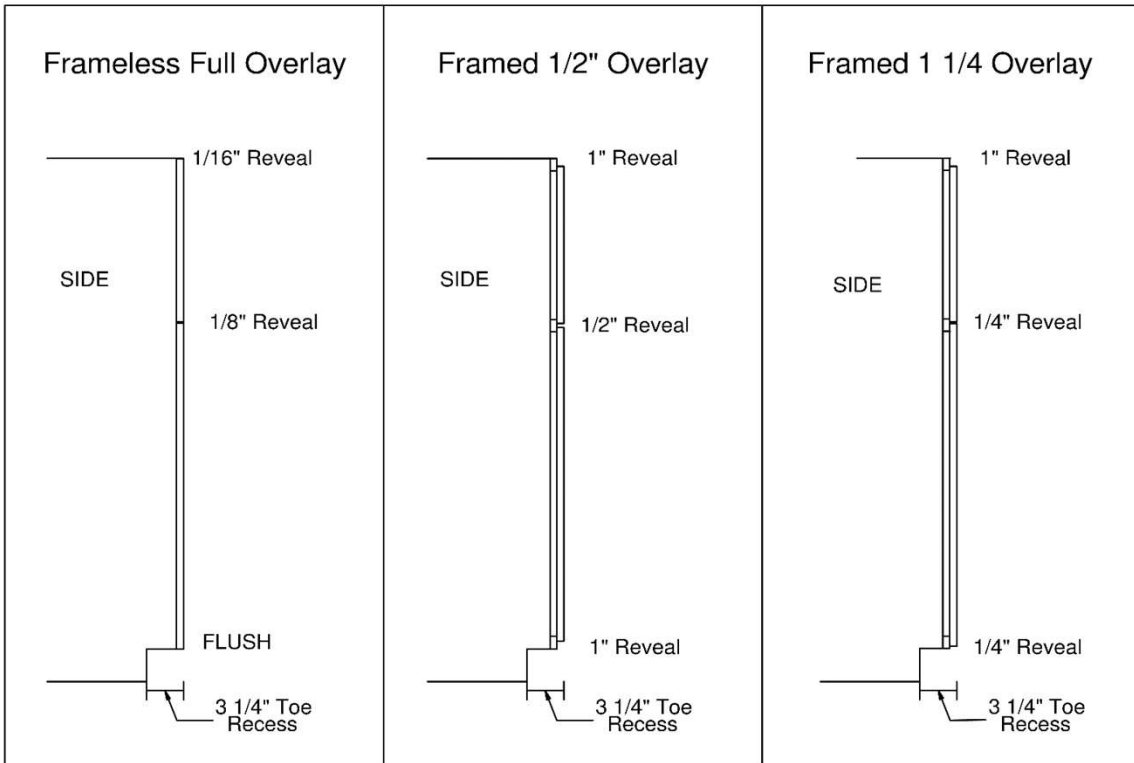
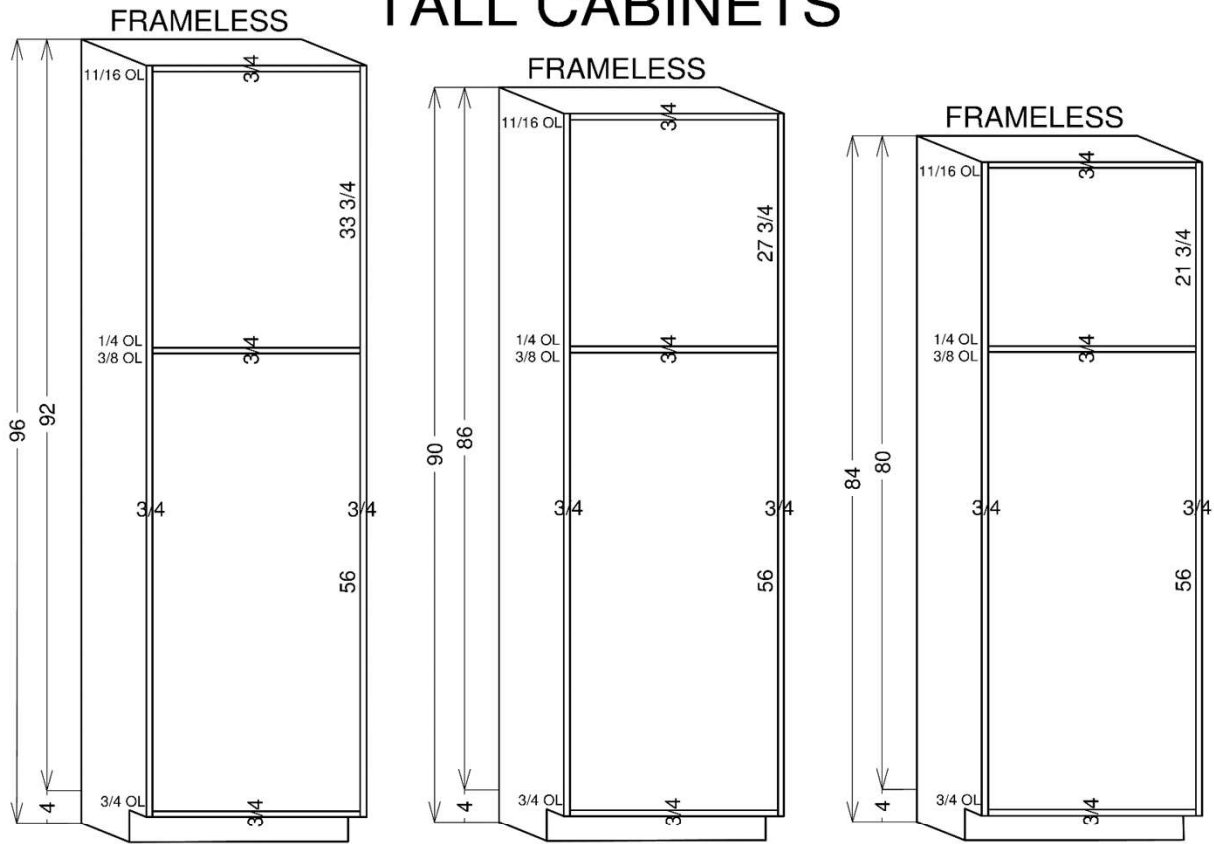
"BLIND AREA" IS THE DISTANCE FROM THE EDGE OF THE CABINET TO THE START OF THE DOOR



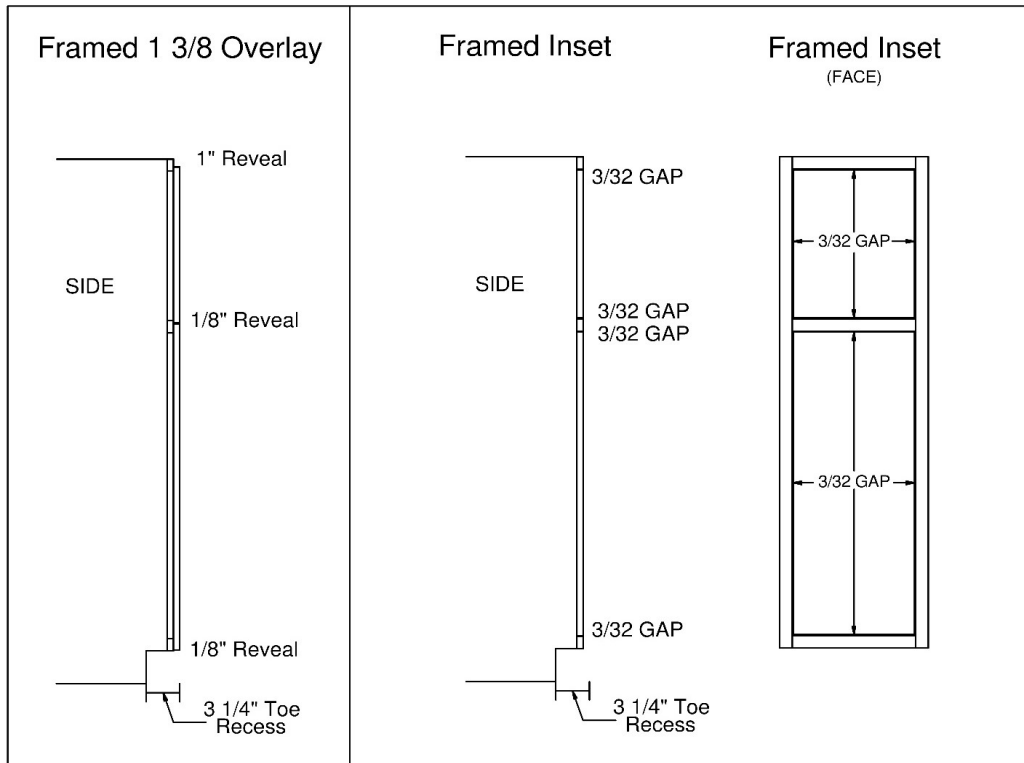
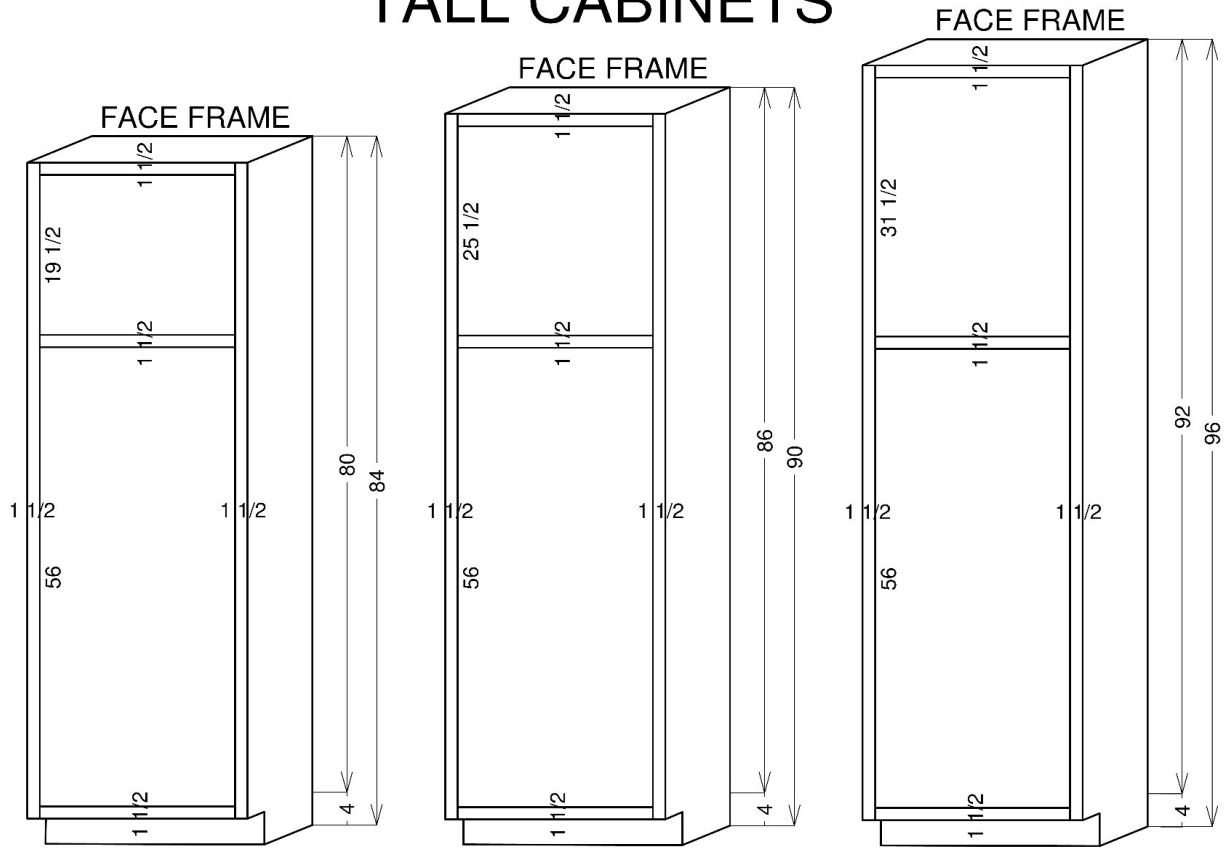
**ALL BLIND CABINETS FOLLOW SAME LOGIC**

ACCURACY OF THE "BLIND AREA" DIMENSION ENTERED IN QOE IS PARAMOUNT TO ENSURING CLEARANCE OF DOORS AND DRAWERS WITH ADJACENT CABINETS.

## TALL CABINETS



## TALL CABINETS



## NOTES



## Wellsford Cabinetry Wood Door Product Specifications

Most wood door styles and finishes are interchangeable between framed and frameless construction types.

	Framed - Particle Board	-Plywood	Frameless - Particle Board	- Plywood
<b>GENERAL CONST- RUCTION</b>	Particle board case with solid wood face frames, drawer boxes and your choice of solid wood or MDF doors and drawer fronts.	Plywood case with solid wood face frames, drawer boxes and your choice of solid wood or MDF doors and drawer fronts.	Particle board case with solid wood drawer boxes and your choice of solid wood or MDF doors and drawer fronts.	Plywood case with solid wood drawer boxes and your choice of solid wood or MDF doors and drawer fronts.
<b>FRONT FRAMES</b>	3/4" thick solid wood with 1-1/2" wide stiles and rails unless otherwise specified. Blind mortise and tenon joints.	3/4" thick solid wood with 1-1/2" wide stiles and rails unless otherwise specified. Blind mortise and tenon joints.	N/A	N/A
<b>CABINET SIDES</b> (not finished)	1/2" construction.thick - particle board with natural maple woodgrain melamine on both sides with 1/4" reveal. Finished interior cabinets will be all plywood	1/2" thick - plywood with maple /birch veneer on both sides with 1/4" reveal. 3/4" option available.	3/4" thick - particle board with matching wood veneer edge-banding for wood door styles.	3/4" thick - plywood with matching wood veneer edgbanding for wood door styles.
<b>FINISHED SIDES</b>	Specie specific wood veneer over particleboard core, finished to match cabinet face. Sides are positioned with a 1/4" reveal to the edge of the face frame. Optional flush finished side 3/4" thick, set without relief line where side meets frame.	Specie specific wood veneer over plywood core, finished to match cabinet face. Sides are positioned with a 1/4" reveal to the edge of the face frame. Optional flush finished side 3/4" thick, set without relief line where side meets frame.	Specie specific wood veneer over particleboard core, finished to match cabinet face on wood door offerings. In some cases 3/4" plywood must be used due to availability.	Specie specific wood veneer over plywood core, finished to match cabinet face.

# General Information Wood Products



	Framed - Particle Board	- Plywood	Frameless - Particle Board	- Plywood
CABINET INTERIOR	<p>Natural maple melamine. Finished sides will be birch/maple veneer finished natural whenever possible. Some wood species such as bamboo are only available double sided. In these cases, the interior of the finished side will be natural on the specie specific veneer. Cabinets with matching finished interior will be all plywood construction.</p>	<p>Unfinished sides will be birch/maple wood veneer finished natural. Finished sides will also be birch/maple finished natural when possible. Some wood species such as bamboo are only available double sided. In these cases, the interior of the finished side will be natural on the specie specific veneer.</p>	<p>Natural maple melamine covered particle board is standard on wood door cabinets. Cabinets with finished sides will have either birch/maple wood veneer interior, finished natural or specie specific wood veneer finished natural.</p>	<p>Birch/maple wood veneer over plywood core, finished natural whenever possible. Some wood species such as bamboo are only available in double sided. In these cases, the interior of the finished side will be natural on the specie specific veneer.</p>
CABINET TOPS	<p>1/2" thick - particle board with natural maple melamine. Most base cabinets, including vanities, have open tops with 3/4" wood corner blocks on all corners. Base corner cabinets, except sink bases, have solid tops.</p>	<p>1/2" thick - plywood with natural birch/maple wood veneer. Most base cabinets, including vanities, have open tops with 3/4" wood corner blocks on all corners. Base corner cabinets, except sink bases, have solid tops. 3/4" option available.</p>	<p>3/4" thick - particle board with white or natural maple melamine on both sides. Most base cabinets, including vanities, have open tops with 3/4" thick by 3-3/4" wide stringers front and back. Stringers on sink cabinets are turned vertical. Base corner cabinets, except sink bases, have solid tops.</p>	<p>3/4" thick plywood with maple veneer both sides. Most base cabinets, including vanities have open tops with 3/4" thick by 3-3/4" wide stringers front and back. Stringers on sink cabinets are turned vertical. Base corner cabinets, except sink bases, have solid tops.</p>

	Framed – Particle Board	Framed – Plywood	Frameless – Particle Board	Frameless – Plywood
CABINET BOTTOMS	1/2" thick particle board with natural maple melamine on both sides. In some cases the grain direction of the base cabinet floor will be front to back to increase sheet good yield. Grain will be consistent within the order.	1/2" thick plywood with birch/maple wood veneer on both sides Wall cabinet bottoms will be stained or painted as per order selection. In some cases the grain direction of the base cabinet floors will be front to back to increase sheet good yield. Grain will be consistent within the order. 3/4" option available.	3/4" thick particle board with natural maple melamine on both sides. In some cases the grain direction of the base cabinet floor will be front to back to increase sheet good yield. Grain will be consistent within the order.	3/4" plywood with maple veneer both sides. Wall cabinet bottoms are stained or painted on the underside as per the order selection. In some cases the grain direction of the base cabinet floor will be front to back to increase sheet good yield. Grain will be consistent within the order.
Wall Cabinet Depth*- w/o doors	13"	13"	13"	13"
Base Cabinet Depth*- w/o doors	24"	24"	24"	24"
Tall Cabinet Depth*- w/o doors	24"	24"	24"	24"

\* These are standard depths which can be changed as you require.

\*\* Sequential grain matching cannot exceed 96" in grain direction, 48" cross grain.

# General Information Wood Products



	Framed – Particle Board	Framed – Plywood	Frameless – Particle Board	Frameless – Plywood
BACKS	1/2" particle board Flush or set in 1/2".	1/2" plywood Flush or set in 1/2"	1/2" particle board, set in 1/2". Fully captive in dado joint.	1/2" plywood, set in 1/2". Fully captive in dado joint.
INTERIOR DEPTH	Back set in 1/2" - OA -1" Flush back - OA -1/2"	Back set in 1/2" - OA -1" Flush back - OA -1/2"	OA -1"	OA -1"
SHELVES	3/4" particle board with natural maple melamine on both faces, PVC edge- banded front edge. Shelf rests are satin chrome pins. Shelves are adjustable in 32mm increments. Matching finished interiors will use 3/4" plywood with specie specific veneer on both faces and front edge.  *width for standard interiors:	3/4" plywood with natural maple/birch veneer on both faces, wood edgebanded front edge. Shelf rests are satin chrome pins. Shelves are adjustable in 32mm increments. Matching finished interiors will use 3/4" plywood with specie specific veneer on both faces and front edge.	3/4" particle board with natural maple melamine on both faces, PVC edge- banded front edge. Shelf rests are satin chrome pins. Shelves are adjustable in 32mm increments. Matching finished interiors will use 3/4" plywood with specie specific veneer on both faces and front edge.	3/4" plywood with natural maple/birch veneer on both faces, wood edgebanded front edge. Shelf rests are satin chrome pins. Shelves are adjustable in 32mm increments. Matching finished interiors will use 3/4" plywood with specie specific veneer on both faces and front edge.
TOEKICKS	4" high x 3-1/4" deep. 1/2" particle board backer intended to be covered with toekick molding upon installation.	4" high x 3-1/4" deep. 1/2" plywood backer intended to be covered with toekick molding upon installation.	4" high x 3-1/4" deep. 1/2" particle board backer intended to be covered with toekick molding upon installation.	4" high x 3-1/4" deep. 1/2" plywood backer intended to be covered with toekick molding upon installation.

	Framed - Particle Board	- Plywood	Frameless - Particle Board	- Plywood
<b>DRAWERS</b>	Standard drawer is 5/8" thick, four sided dovetailed drawer box in solid beech with eased top edge and 1/4" plywood bottom. The glide is a full extension soft close undermount by Blum. Other upgraded wood species and glides are available.	Standard drawer is 5/8" thick, four sided dovetailed drawer box in solid beech with eased top edge and 1/4" plywood bottom. The glide is a full extension soft close undermount by Blum. Other upgraded wood species and glides are available.	Standard drawer is 5/8" thick, four sided dovetailed drawer box in solid beech with eased top edge and 1/4" plywood bottom. The glide is a full extension soft close undermount by Blum. Other upgraded wood species and glides are available.	Standard drawer is 5/8" thick, four sided dovetailed drawer box in solid beech with eased top edge and 1/4" plywood bottom. The glide is a full extension soft close undermount by Blum. Other upgraded wood species and glides are available.
<b>ROLL-OUT TRAYS</b>	5/8" thick, four sided dovetailed drawer box in solid beech with eased top edge and 1/4" plywood bottom. Available in 3", 4" and 6" heights. Standard glides are full extension soft close undermount by Blum. All rollouts have routed hand pulls and are factory installed on a floor or adjustable shelf. Other upgraded wood species and Blum glides are available.	5/8" thick, four sided dovetailed drawer box in solid beech with eased top edge and 1/4" plywood bottom. Available in 3", 4" and 6" heights. Standard glides are full extension soft close undermount by Blum. All rollouts have routed hand pulls and are factory installed on a floor or adjustable shelf. Other upgraded wood species and Blum glides are available.	5/8" thick, four sided dovetailed drawer box in solid beech with eased top edge and 1/4" plywood bottom. Available in 3", 4" and 6" heights. Standard glides are full extension soft close undermount by Blum. All rollouts have routed hand pulls and are factory installed on a floor or adjustable shelf. Other upgraded wood species and Blum glides are available.	5/8" thick, four sided dovetailed drawer box in solid beech with eased top edge and 1/4" plywood bottom. Available in 3", 4" and 6" heights. Standard glides are full extension soft close undermount by Blum. All rollouts have routed hand pulls and are factory installed on a floor or adjustable shelf. Other upgraded wood species and Blum glides are available.

# General Information

## Wood Products



	Framed - Particle Board	- Plywood	Frameless - Particle Board	- Plywood
HINGES	Blum integrated soft close concealed hinge for 1/2", 1-1/4" and 1-3/8" overlays. Knife hinge in white or antique brass for 3/8" inset. Blum European concealed hinge with soft close for beaded inset or plain inset.	Blum integrated soft close concealed hinge for 1/2", 1-1/4" and 1-3/8" overlays. Knife hinge in white or antique brass for 3/8" inset. Blum European concealed hinge with soft close for beaded inset or plain inset.	Blum European concealed hinge with integrated soft close.	Blum European concealed hinge with integrated soft close.
OVERLAYS	1/2", 1-1/4", 1-3/8" overlays, 3/8" partial inset, 1/4" beaded inset, 3/8" beaded inset, plain inset, French inset	1/2", 1-1/4", 1-3/8" overlays, 3/8" partial inset, 1/4" beaded inset, 3/8" beaded inset, plain inset, French inset	Doors sized for 1/16" reveal (1/8" between adjacent doors and/or drawers.)	Doors sized for 1/16" reveal (1/8" between adjacent doors and/or drawers.)
FINISHES	Stains, glazes, Colortones, Colortones with glazes, custom paint colors, stain matches, heirloom finishes, distressing, wear sanding, antiquing.	Stains, glazes, Colortones, Colortones with glazes, custom paint colors, stain matches, heirloom finishes, distressing, wear sanding, antiquing.	Stains, glazes, Colortones, Colortones with glazes, custom paint colors, stain matches, heirloom finishes, distressing, wear sanding, antiquing.	Stains, glazes, Colortones, Colortones with glazes, custom paint colors, stain matches, heirloom finishes, distressing, wear sanding, antiquing.

	Framed - Particle Board	- Plywood	Frameless - Particle Board	- Plywood
FINISHED SIDE OPTIONS	Applied door wainscot, integral wainscot, frame and door wainscot, beaded sides, hutch sided, applied molding.	Applied door wainscot, integral wainscot, frame and door wainscot, beaded sides, hutch sided, applied molding.	Applied doors available factory installed or field installed. Doors sized the same as cabinet face. Applied molding side available.	Applied doors available factory installed or field installed. Doors sized the same as cabinet face. Applied molding side available.
DOOR OFFERING	Wood standards with custom options.	Wood standards with custom options.	Wood standards with custom options.	Wood standards with custom options.
ACCES- SORIES	Rev-a-shelf, Hafele, All factory installed	Rev-a-shelf, Hafele, All factory installed	Rev-a-shelf, Hafele, All factory installed	Rev-a-shelf, Hafele, All factory installed
TRIM OFFERING	All stock and special order profiles. Special lengths available. Some limits on profiles available in particular wood species.	All stock and special order profiles. Special lengths available. Some limits on profiles available in particular wood species.	All stock and special order profiles. Special lengths available. Some limits on profiles available in particular wood species.	All stock and special order profiles. Special lengths available. Some limits on profiles available in particular wood species.
ENVIRON- MENTAL	NAUF core components.	NAUF core components.	NAUF core components.	NAUF core components.

## Summary

<b>Framed Construction Options</b>
Particle Board Core - 1/2"
Plywood Core - 1/2" standard. 3/4" is an optional upgrade
<b>Frameless Construction Options</b>
Particle Board Core - 3/4"
Plywood Core - 3/4"
<b>Style &amp; Function Options</b>
<b>Overlay</b>
1/2" Overlay
1-1/4" Overlay
1-3/8" Overlay
Frameless Full Overlay
<b>Inset</b>
Plain Inset
Beaded Inset - 1/4" bead
Beaded Inset - 3/8" bead
French Inset (1" thick frame with 3/4" thick door)
<b>Cabinet Hinges</b>
Overlay - Blum w/ integrated soft close on both Framed and Frameless
Inset - concealed Blum soft close hinge
<b>Drawer Boxes*</b>
Standard dovetail construction and deluxe dovetail construction
5/8" solid Beech w/ 1/4" natural maple drawer bottom
5/8" solid Maple w/ 1/4" natural maple drawer bottom
5/8" solid Cherry w/ 1/4" natural cherry drawer bottom
5/8" solid Walnut w/ 1/4" natural walnut drawer bottom
Other wood species available including Aromatic Cedar drawer bottom
*Logo engraving available
<b>Drawer Guides</b>
Blumotion full extension - weight limit: 100 lb. static, 95 lb dynamic Available to fit 12, 15, 18, 21& 24" deep cabinets
Heavy duty glides on all large drawers over 30" wide - weight limit: 150 lb. static, 135 lb dynamic Available to fit 21, 24, 27, 30 & 33" deep cabinets





## Limited Lifetime Warranty on Wood Products

Wellsford Cabinetry, Inc. warrants that our products will be free of defects in workmanship. Under conditions of normal household use, our products will conform, within acceptable tolerances, to applicable manufacturing specifications. This limited warranty applies only to products that are stored, handled, and used in a controlled environment and installed in a professional manner.

WELLSFORD CABINETY, INC. WILL NOT BE LIABLE FOR ANY ACTUAL, CONSEQUENTIAL OR INCIDENTAL DAMAGES ARISING FROM DEFECTIVE CABINETY. YOUR SOLE WARRANTY IS FOR THE REPAIR OR REPLACEMENT OF THE DAMAGED PART.

Wellsford Cabinetry's warranty is limited solely to the value of the original materials purchased from Wellsford and is further limited in amount to the purchase price paid for such materials. Should the original purchaser of Wellsford Cabinetry find and report defects due to workmanship, under normal use and service, Wellsford Cabinetry will have the option to repair or replace the defective cabinetry.

Wellsford Cabinetry will not be responsible for the payment of labor for the removal of the defective cabinetry, transportation or shipping costs incurred in providing or securing warranty service, or labor for the reinstallation of the repaired and/or replacement materials.

Natural characteristics in the wood (burls, grain patterns, pin knots, mineral deposits, sap, etc.) that fall within Wellsford Cabinetry's specifications will not be considered defects.

Because the individual staves of the panel continue to contract and expand, lines may appear on solid wood panels, and offsets may develop from one stave to another. These will not be considered defective. Frame and mullion doors with inserts not provided by Wellsford will not be warranted other than for warpage.

Joint fractures on frames and doors are not considered a defect. Flush side joint fractures are not considered a defect. These result from wood movement due to expansion and contraction. Veneer splits are not considered defective, they are a natural characteristic of veneered plywood.

Some species, particularly Cherry, will darken naturally with age. Wellsford Cabinetry, Inc. will not be liable for the change in appearance of any product, finished or unfinished, due to this aging process. Results of aging will be more obvious when using clear, light or glazed finishes.

Mitered doors are not warranted against joint separations that occur as a result of high humidity or moisture conditions. High humidity will cause the wood to expand, and low humidity will cause shrinkage. Wood movement due to moisture cannot be prevented.

Damage caused by a plumbing leak, flood, or some other form of excessive exposure to water is not warranted. Your cabinetry has been made using the finest materials and craftsmanship but it is still only wood and is subject to nicks, gauges, chips, and other damage when subject to abuse. This damage is not covered under warranty.

The lifetime of this warranty will end if a product is discontinued from Wellsford Cabinetry's offering.

Warpage coverage is provided as outlined on the following pages of this warranty.

Solid wood color may differ due to natural grain variations. Natural and painted finishes will at times vary in color tone and grain characteristics. Wellsford Cabinetry does not warrant their product finishes for wearability or colorfastness. Acrylic fingernails can scrape away the finish over time. This is not covered under warranty.

All warranty claims are for replacement of defective material only. Any material needed in addition to the defective piece is available for purchase. Wellsford Cabinetry, Inc. expressly disclaims any and all other warranties, whether expressed or implied.

Original purchaser agrees that any dispute regarding warranty coverage will be submitted exclusively to the jurisdiction of the state courts for Montgomery County, Pennsylvania. The original purchaser agrees to personal jurisdiction of those courts.

This warranty applies only to the original purchaser and is nontransferable.

Warranty claims must be made to the dealer from whom the cabinetry was purchased. If the dealer is unavailable, then write to:

Wellsford Cabinetry, Inc.  
Warranty Department  
1810 W. High Street  
Stowe, PA 19464

Jan. 2022

## Tolerances

Our door and drawer fronts are covered for warpage for the period of one year from the manufacturing date. Both center panel size and overall size must be considered. Tolerances are as follows:

### Center Panels

- Mortise & tenon door styles - Frame and center panel products over 47-15/16" in height but under 25-15/16" in width, must have two center panels top-and-bottom. Additional center panels are required for every multiple of 47-15/16" in height. For this reason, **all tall wall cabinet doors, tall pantry cabinet doors and tall linen cabinet doors are shipped standard as two panel doors.** Products wider than 25-15/16 and less than 47-15/16 must have 2 center panels left-to-right
- Frame and center panel products that do not conform to the rules stated above will not be covered under warpage warranty.
- Mitered door styles – are not available with 2 center panels. Any mitered doors over 48" high will be single panel and will not be covered for warpage.

### Overall Size

- Allowable tolerances for warpage and twist for frame and center panel doors and drawer fronts are:
 

Up to 25-15/16" wide and 47-15/16" high . . . . .	1/8"
Up to 25-15/16" wide and 48" to 64-15/16" high. . . . .	1/4"
Up to 25-15/16" wide and 65" to 83-15/16" high. . . . .	5/16"

 Any door exceeding 25-15/16" wide or 83-15/16" high will not be warranted.
- Allowable tolerances for contraction, expansion and warpage for one piece products are:
 

Up to 12" wide and 21-15/16" high . . . . .	1/8"
12-1/16" to 22" wide or 22" to 43-15/16" high . . . . .	1/4"

 Any one piece product exceeding 22" wide or 43-15/16" high will not be warranted.
- All three piece products over 30" wide and 14" high are not warranted.
- Wainscot products are not warranted over 25-15/16" wide and 83-15/16" high. Normally, if wainscot products are warped, they can be straightened out when they are attached to the cabinetry or wall. Since wainscot is typically installed with mechanical fasteners, it is not subject to the forces and potential for movement seen in hinged cabinet doors.

## Wellsford Warpage Coverage

### Size Restrictions and Tolerances

The warpage coverage must begin with an explanation of the effects of moisture in wood.

- Any solid wood product will expand or contract over time as moisture and climate conditions change. Mitered door styles need low, stable moisture conditions in order for the joints to remain tight. Doors, drawer fronts and wainscot products must conform to the size restrictions shown in the chart below.

- Effects of moisture, addition or loss of, may include panel expansion, panel contraction, joint expansion or opening (especially on mitered doors), stile bowing, stile/rail expansion and stave to stave lines becoming visible in panels. Contraction of finished panels may also produce an effect called white line, in which a narrow strip of unfinished wood becomes visible at the point where the panel inserts into the framing. All framing beads have been engineered with a back bevel to allow finishes to penetrate into the panel raise/framing bead area, helping to reduce the possibility of white line.

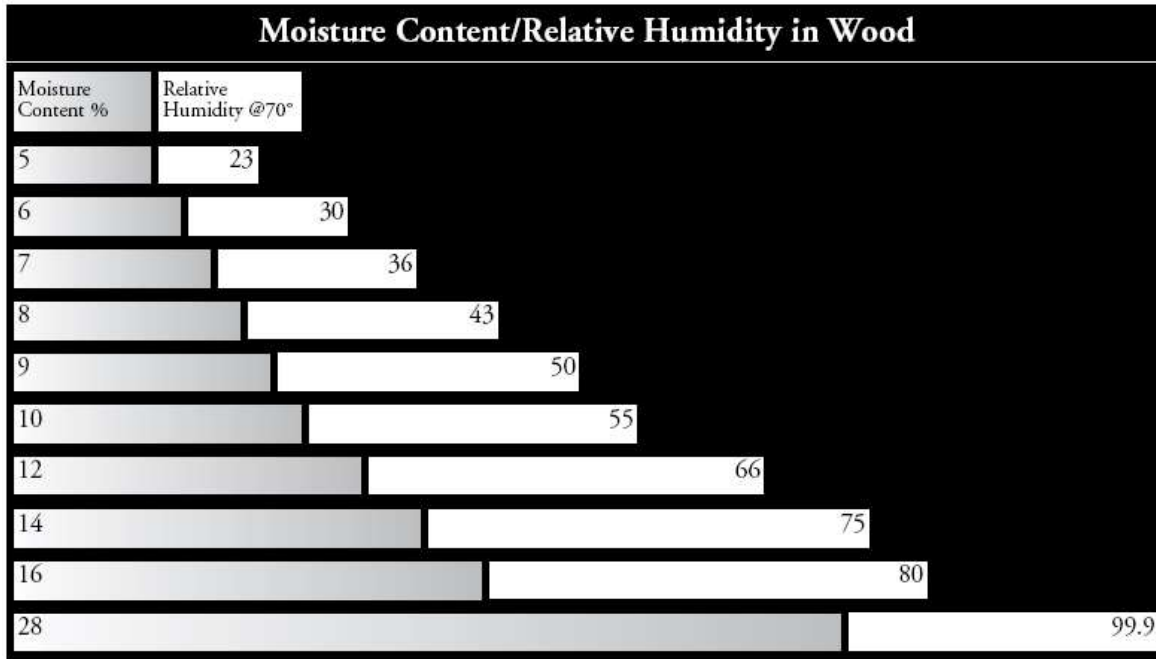
- Wood is a hygroscopic material, meaning that it will absorb or release moisture until it is in equilibrium with the moisture in the air. This is true of all wood, finished and unfinished. Finishing will slow, but not eliminate the process. Wood exposed to a constant humidity level will achieve constant moisture content (MC). Wood will increase in width and thickness as it increases in MC, and will decrease in width and thickness as it decreases in MC.

This chart indicates the change in a 12" wide panel of various wood species as a result of moisture content increase from 5% to 14%.

Expansion of wood caused by an increase in moisture content	
← 12 inch wide sample of wood at 5% moisture content... →	... and at 14% →
Bamboo	12.17"
White Pine	12.23"
Mahogany	12.26"
Alder/Cherry/Soft Maple	12.27"
Walnut	12.29"
Lyptus	12.32"
White Birch/Red Birch	12.36"
Hard Maple	12.38"
White Oak	12.39"
Red Oak	12.40"
Hickory	12.44"

The chart indicates that a Hard Maple panel could expand over 3/8".

This chart shows how moisture content relates to relative humidity.



The humidity level in the wood will increase or decrease until it is the same as the humidity level in the room.

For these reasons highlighted in the above charts, cabinetry stored or installed in environments without climate control are very susceptible to expansion due to moisture and may not be warranted. Examples of this are boats, vacation homes that do not maintain climate control in the off-season, waterfront homes, coastal regions, and new construction or renovation in which climate control is neglected.

### Tips for Avoiding Moisture-related Problems:

- You may use the information in the above charts to educate your clients on the importance of climate control and the effects of moisture in wood.
- The charts can also be useful in determining which wood species are least impacted by moisture.
- Avoid wide framing, especially on miter doors. The wider the framing, the greater chance that joint fractures will occur.
- The use of ¼" plywood center panels creates a more stable door because plywood does not expand and contract at the rates of solid wood. This does raise a color issue that will be discussed in the finishing section.
- Hybrid doors, wood frames with MDF center panels, are great alternatives for painted products. The MDF center panel is stable and since it is one piece, it cannot develop stave separation. This is also good for painted wainscot products.

## Care and Cleaning of Wood Products

Your cabinetry has been finished with a conversion varnish top coat. This top coat provides superior protection and requires minimal care and cleaning. We recommend periodic cleaning with a mild dish detergent and water solution to remove dirt, dust, and grease that build up with routine use. Dampen a soft non-abrasive cloth with the solution and wipe the entire surface of your cabinetry. Follow with a dry cloth. Never use a cloth wet enough to allow the solution to run down the face of the cabinetry, and always dry the cabinetry if liquid is spilled on the surface.

A conversion varnish top coat resists damage from common kitchen chemicals and food acids while maintaining color and sheen. However, it is not indestructible.

Damage can be caused by repeatedly touching the same area of wood. Dirt and oil from hands transfers to the wood surface. This leads to a softening of the finish, which becomes sticky, or a wearing away of the top layer of finish. The use of decorative hardware to operate doors and drawers helps to prevent this type of premature finish failure.

Hand creams and fingernails can also cause finish failure issues. The use of hand cream before touching the wood will allow a transfer of the hand cream to the wood surface. The hand cream will cause softening of the finish. Repeated scraping of the finished surface with fingernails will lead to visible wear. Care must be taken to avoid contact of fingernails and hand creams with the finished surface.

Abrasive cleaners, ammonia, or other types of harsh chemicals may cause discoloration, scratching, marring and dulling of the finish. Furniture polishes and waxes will leave a film on the surface that attracts dust and dirt. These polishes may also cause an irregular or blotchy appearance.

Environment will affect your cabinetry as well. Changes in temperature and humidity cause the wood to expand and contract. This movement can cause unsightly joint separations in doors, drawer fronts, and face frames. This effect can be minimized by keeping your home's temperature and humidity controlled. Avoid turning your HVAC system off if leaving for vacation.

### Touch-up & Care Kits

Touch up kits are available in most Wellsford standard colors. There are some for which there is no crayon and of course there are no touch up kits available in custom colors. A small vial of custom color paint can be ordered. Our paints do not contain drying agent so a small vial of catalyst must be ordered separately. A wide variety of shades of color putty are available from Mohawk Finishing Products. They can be reached at 208-777-WOOD (9663), from 8-5 PST.

## Characteristics Unique to Alternative Materials

**Door style and color or finish are NOT interchangeable.**

Minimum size doors vary by door style. See the Wellsford Door Selection Guide

**Decorative moldings are limited and specific to each line.**

Panels - cut to size -

Minimum: 1/4" (6mm) non-edgebanded: 2-1/2 x 2-1/2.\*

3/4" (19mm) with edgebanding: 2-3/4 x 6-3/8\*

\*There is a minimum 1 sf charge regardless of size

Maximum: 48 x 96

Sequential Grain Matching - is available with Synchronicity High Gloss woodgrain patterns.

- Vertical or horizontal grain orientation must be specified.
- Grain matching will flow through all of the associated doors and drawer fronts on individual cabinets but not from cabinet to cabinet.
- Maximum cabinet sizes cannot exceed 46" across the grain, or 94" with the grain.
- In the event that a replacement part is needed, the entire series of doors and drawer fronts will need to be reordered to ensure a consistent grain match.

## Touch-up & Care of Alternative Materials

Touch up Kits - Decorative laminate veneer (DLV) and thermally textured surface (TTS) materials are resistant to surface scratches, dents and normal wear. For care of minor surface abrasions, touch up kits have been carefully matched to each color.

Touch up kits are available in:

Allure  
Intrigue  
Strata  
Vogue  
Synchronicity Super Matte

**NOTE: Touch up kits are NOT available in Synchronicity High Gloss.  
See special care instructions on p. 55.**

Heat Shield protects the edges of doors and drawer heads from excessive heat during oven cleaning and is **required** for all Alternative Material cabinets adjacent to heat generating appliances such as ranges and wall ovens.

- To be mounted on cabinet sides next to ovens
- 22 gauge aluminum, pre drilled for easy installation.
- 1-1/2" x 30" epoxy coated finish, available in flat black or flat white.
- Should be installed flush with face of doors.
- Allow an additional 3/64" in overall width for appliance installation.
- QOE order code: HG-HS-FB for black  
HG-HS-FW for white



## Cleaning and Maintaining High Gloss Cabinetry

**Both the High Gloss Care Kit and the High Gloss Peel Coat Eraser (below) should be included on every order for high gloss cabinetry.**

High Gloss Care Kit – Harsh cleaners and chemicals as well as abrasive cleaners and products must never come in contact with any high gloss surface. Use only mild cleaners and soft, lint-free cloths to clean this product. Do not use paper towels to clean high gloss cabinetry as permanent scratches will occur! Using the products in a High Gloss care kit (special cleaner, polish, a dusting cloth plus cleaning and polishing cloths) will help to maintain a showroom finish.

QOE order code: HG-CK

High Gloss Peel Coat Eraser – High gloss materials come with a protective peel coat to protect the face and edges of high gloss products from minor abrasions that may occur during installation. A high gloss peel coat eraser is a wooden tool with a specialized rubber base that helps grip the protective peel coat. After cabinet installation is complete, but prior to installation of decorative hardware, the eraser should be used to ease removal of the peel coat from the face and edges of the doors and moldings.

QOE order code: HG-PCE

### ALTERNATIVE MATERIAL SPECIFICATIONS

	Frameless – NAUF Engineered board core
CABINET INTERIOR	White, gray or natural maple melamine
BACKS	1/2" particle board, set in 1/2"; fully captive in dado joint.
INTERIOR DEPTH	OA – 1"
SHELVES *width for standard interiors:	3/4" particle board with white, gray or natural maple melamine on both faces, PVC edge-banded front edge. Shelf rests are satin chrome pins. Shelves are adjustable in 32mm increments.  OA cab width – 1-5/8"      OA cab depth – 2-1/4"
TOEKICKS	4" high x 3-1/4" deep. 1/2" particle board backer intended to be covered with toekick molding upon installation. Toekick moulding ordered separately.
DRAWERS	Standard drawer is 5/8" thick, four sided dovetailed drawer box in solid beech with eased top edge and 1/4" plywood bottom. The glide is a full extension soft close undermount by Blum. Other upgraded wood species and glides are available.
ROLL-OUT TRAYS	5/8" thick, four sided dovetailed drawer box in solid beech with eased top edge and 1/4" plywood bottom. Available in 3", 4" and 6" heights. Standard glides are full extension soft close undermount by Blum. All rollouts have routed hand pulls and are factory installed on a floor or adjustable shelf. Other upgraded wood species and Blum glides are available.

	Frameless – NAUF Engineered board core
HINGES	Blum European concealed hinge with integrated soft close.
OVERLAYS	Doors sized for 1/16” reveal (1/8” between adjacent doors and/or drawers.)
FINISHES	Decorative laminate veneer (DLV), high gloss acrylic, textured melamine, Super Matte acrylic.
FINISHED SIDE OPTIONS	Applied doors available factory installed or field installed. Doors sized the same as cabinet face or extended flush with the face of the door.
DOOR OFFERING	DLV, acrylic in high gloss and Super Matte, and Thermally Textured Surfaces (TTS)
ACCESSORIES	Rev-a-shelf, Hafele, All factory installed
TRIM OFFERING	Limited moldings in their own distinctive profiles. See QOE or the Wellsford Alternative Materials brochure.
ENVIRONMENTAL	NAUF core components.

## Summary

Frameless Full Overlay Construction Options
NAUF Engineered Board Core – ¾"
Cabinet Hinges
Blum w/ integrated soft close
Drawer Boxes*
5/8" solid Beech w/ ¼" natural maple drawer bottom
5/8" solid Maple w/ ¼" natural maple drawer bottom
5/8" solid Cherry w/ ¼" natural cherry drawer bottom
5/8" solid Walnut w/ ¼" natural walnut drawer bottom
Other wood species available including Aromatic Cedar drawer bottoms
*Logo engraving available
Drawer Guides
Blumotion full extension – weight limit: 100 lb. static, 95 lb. dynamic Available to fit 12, 15, 18, 21 & 24" deep cabinets
Heavy duty glides on all large drawers over 30" wide – weight limit: 150lb. static, 135 lb. dynamic. Available to fit 21, 24, 27, 30 & 33" deep cabinets



## Limited Lifetime Warranty

Wellsford Cabinetry, Inc. warrants that our products will be free of defects in workmanship. Under conditions of normal household use, our products will conform, within acceptable tolerances, to applicable manufacturing specifications. This limited warranty applies only to products that are stored, handled, and used in a controlled environment and installed in a professional manner.

WELLSFORD CABINETY, INC. WILL NOT BE LIABLE FOR ANY ACTUAL, CONSEQUENTIAL OR INCIDENTAL DAMAGES ARISING FROM DEFECTIVE CABINETY. YOUR SOLE WARRANTY IS FOR THE REPAIR OR REPLACEMENT OF THE DAMAGED PART.

Wellsford Cabinetry's warranty is limited solely to the value of the original materials purchased from Wellsford and is further limited in amount to the purchase price paid for such materials. Should the original purchaser of Wellsford Cabinetry find and report defects due to workmanship, under normal use and service, Wellsford Cabinetry will have the option to repair or replace the defective cabinetry.

Wellsford Cabinetry will not be responsible for the payment of labor for the removal of the defective cabinetry, transportation or shipping costs incurred in providing or securing warranty service, or labor for the reinstallation of the repaired and/or replacement materials.

Natural characteristics in the product (burls, grain patterns, pin knots, mineral deposits, sap, etc.) that fall within Wellsford Cabinetry's specifications will not be considered defects.

Some species, particularly Cherry, will darken naturally with age. Wellsford Cabinetry, Inc. will not be liable for the change in appearance of any product, finished or unfinished, due to this aging process. Results of aging will be more obvious when using clear, light or glazed finishes.

Mitered doors are not warranted against joint separations that occur as a result of high humidity or moisture conditions. High humidity will cause the wood to expand, and low humidity will cause shrinkage. Wood movement due to moisture cannot be prevented.

Damage caused by a plumbing leak, flood, or some other form of excessive exposure to water is not warranted. Your cabinetry has been made using the finest materials and craftsmanship but it is still only wood and is subject to nicks, gauges, chips, and other damage when subject to abuse. This damage is not covered under warranty.

The lifetime of this warranty will end if a product is discontinued from Wellsford Cabinetry's offering.

Warpage coverage is provided as outlined on the following pages of this warranty.

All warranty claims are for replacement of defective material only. Any material needed in addition to the defective piece is available for purchase. Wellsford Cabinetry, Inc. expressly disclaims any and all other warranties, whether expressed or implied.

Original purchaser agrees that any dispute regarding warranty coverage will be submitted exclusively to the jurisdiction of the state courts for Montgomery County, Pennsylvania. The original purchaser agrees to personal jurisdiction of those courts.

This warranty applies only to the original purchaser and is nontransferable.

Warranty claims must be made to the dealer from whom the cabinetry was purchased. If the dealer is unavailable, then write to:

Wellsford Cabinetry, Inc.  
Warranty Department  
1810 W. High Street  
Stowe, PA 19464

## Care and Cleaning of Alternative Materials

Alternative material products are generally more durable than wood products. They do not have a sprayed finish and they use engineered core materials that are resistant to changes in humidity. If you have a high gloss product, we recommend the high gloss care kit available through your Wellsford Cabinetry dealer.

A special note for high gloss product: Use a soft lint-free cloth. Use of paper towels to wipe the high gloss will cause permanent scratches.

For all other alternative material doors and finishes we recommend the same cleaning procedures as wood products outlined on p. 51.

Alternative material products are susceptible to damage from heat. Heat shields should be used on cabinets adjacent to ovens. The high heat generated during oven cleaning cycles can cause delamination of the adjacent cabinets. Heat shields are available and can be ordered to ship with the cabinet order or are also available as a part order.