

**NUMBER OF ADJUSTABLE SHELF LEVELS  
(SL) DEPEND UPON HEIGHT OF CABINET.**

0" to 17-15/16" H - 0 SL  
 18" to 26 15/16" H - 1 SL  
 27" to 36" H - 2 SL  
 36 1/16" to 48" H - 3 SL  
 48 1/16" to 69 15/16" H - 4 SL  
 70" to 79 15/16" - 5 SL  
 80" to 90" - 6 SL  
 90 1/16" to 102" - 7 SL  
 102" to 120" - 8 SL

IF NO SHELF LEVELS,  
 OPENING IS NOT DRILLED FOR SHELVES.  
 SUBTRACT ONE SHELF FOR EACH DRAWER.

\*Cabinets at or near minimum may require slab door or modifications to door framing.

\*\*Optional Vertical Divider

Recommended Over 48" Required over 60" wide

\*\*\*Doors over 48" High will have 2 panels in order to be covered by warpage warranty.

Drawer Slides

- 12" to 24" Deep will have Under-Mount Slides
- Shallow depth drawers (12 to 15" deep) that are over 24" wide should have optional stabilizer added (DS).
- 9" Deep allowed but will have Side-Mount Slides
- Slides are not available Below 9" Deep
- Deep drawers over 26" wide (30" Cabinet) will receive heavy duty glides
- All 27" deep drawer glides are Heavy Duty

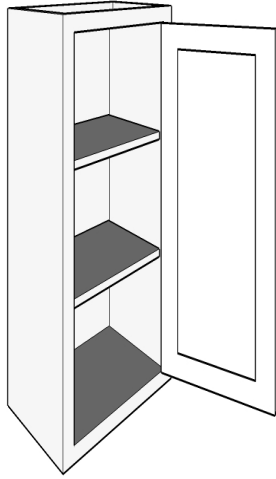
Rollouts

- Mounted to floor if only one rollout is ordered (unless specified otherwise).
- Use Blum undermount glides – soft close
- Rollouts in cabinets deeper than 24" will be 21" deep with the extra depth to the back.
- 24" and 27" deep rollouts are available as special quote.

---

Left Blank for Notes

## W1D



### Wall 1 Door

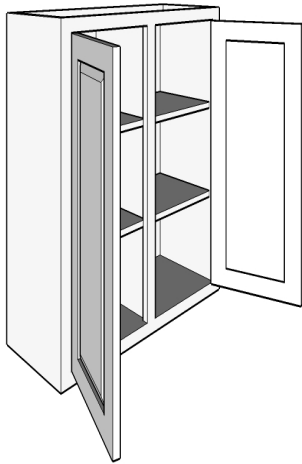
<u>Size Range</u>	Face Frame	Frameless
Width	*6" to **48"	*6" to **48"
Height	*6" to ***72"	*6" to 72"
Depth	6" to 30"	6" to 30"

- \*Cabinets at or near minimum may require slab door or modifications to door framing.
- \*\*Cabinet width can exceed 24" only as a lift-up door.
- \*\*\*Doors over 48" High will have 2 panels
- \*\*\*\*Single Panel doors cannot exceed 24" x 48".

## Wall 2 Door 1 Center Stile

### W2D

NOT AVAILABLE IN FRAMELESS

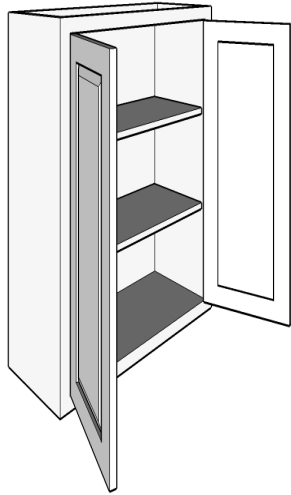


<u>Size Range</u>	Face Frame	Frameless
Width	*15 3/4" to **52"	*15 1/4" to **52"
Height	*8" to 72"	*7 5/8" to 72"
Depth	6" to 30"	6" to 30"

Optional Vertical Divider Shown  
 Recommended Over 48"  
 Required over 60" wide

### Wall Butt Doors

W2DBD



<u>Size Range</u>	Face Frame	Frameless
Width	*15 1/2" to 52"	*15 1/8" to 52"
Height	*8" to ***72"	*7 5/8" to ***72"
Depth	6" to 30"	6" to 30"

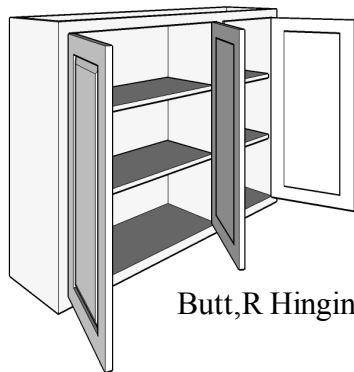
\*Cabinets at or near minimum may require slab door or modifications to door framing.

\*\*\*Doors over 48" High will have 2 panels

### Wall 3 Doors Butt 1 Center Stile 1 Set Butt Doors

W3DBD

NOT AVAILABLE IN FRAMELESS



Butt,R Hinging Shown

<u>Size Range</u>	Face Frame	Frameless
Width	*23 1/4" to **78"	*22 3/4" to **78"
Height	*8" to ***72"	*7 5/8" to ***72"
Depth	6" to 30"	6" to 30"

\*Cabinets at or near minimum may require slab door or modifications to door framing.

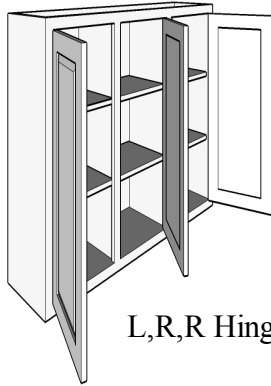
\*\*Optional Vertical Divider Shown

Recommended Over 48" Required over 60" wide

\*\*\*Doors over 48" High will have 2 panels

NOT AVAILABLE IN FRAMELESS

### Wall 3 Doors - 2 Center Stiles



L,R,R Hinging Shown

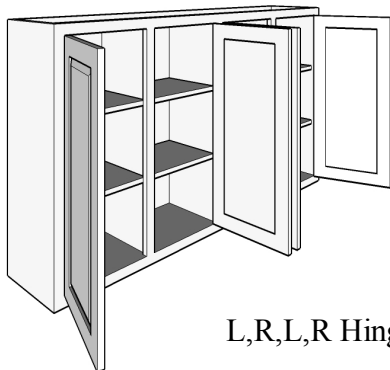
W3D

<u>Size Range</u>	Face Frame	Frameless
Width	*23 1/2" to **78"	*22 3/4" to **78"
Height	*8" to ***72"	*7 5/8" to ***72"
Depth	6" to 30"	6" to 30"

\*\*Optional Vertical Divider Shown (2)  
Recommended Over 48" Required over 60" wide

NOT AVAILABLE IN FRAMELESS

### Wall 4 Doors - 3 Center Stiles



L,R,L,R Hinging Shown

W4D

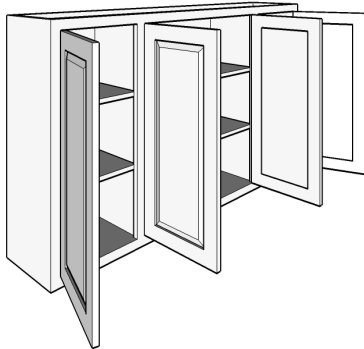
<u>Size Range</u>	Face Frame	Frameless
Width	*31 1/4" to **105"	*30 3/8" to **104"
Height	*8" to ***78"	*7 5/8" to ***72"
Depth	6" to 30"	6" to 30"

\*Cabinets at or near minimum may require slab door or modifications to door framing.

\*\*Optional Vertical Divider Shown (3)  
Recommended Over 48" Required over 60" wide

\*\*\*Doors over 48" High will have 2 panels

NOT AVAILABLE IN FRAMELESS



L,Butt,R Hinging Shown

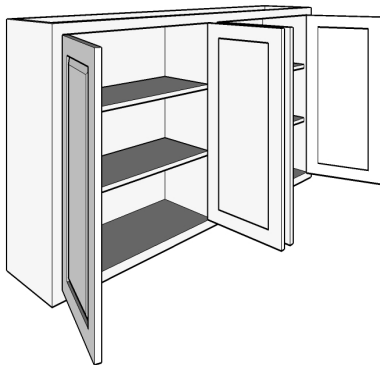
**Wall 4 Door  
2 Center Stiles,  
1 Set Butt Doors**

W4DBD

<u>Size Range</u>	Face Frame	Frameless
Width	*31" to **104"	*30 1/4" to **104"
Height	*6" to ***72"	*6" to ***72"
Depth	6" to 30"	6" to 30"

\*Cabinets at or near minimum may require slab door or modifications to door framing.  
 \*\*Optional Vertical Divider Shown (2)  
 Recommended Over 48" Required over 60" wide  
 \*\*\*Doors over 48" High will have 2 panels

NOT AVAILABLE IN FRAMELESS

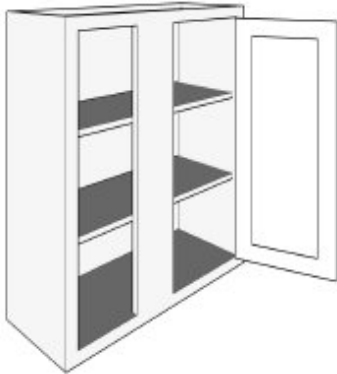


**Wall 4 Door  
1 Center Stile,  
2 Sets Butt Doors**

W4D2BD

<u>Size Range</u>	Face Frame	Frameless
Width	*30 3/4" to **104 1/2"	*30 3/8" to **103"
Height	*8" to ***72"	*7 5/8" to ***72"
Depth	6" to 30"	6" to 30"

\*Cabinets at or near minimum may require slab door or modifications to door framing.  
 \*\*Optional Vertical Divider Shown  
 Recommended Over 48" Required over 60" wide  
 \*\*\*Doors over 48" High will have 2 panels



Blind will be closed  
With panel.

Please see p. 0.24 for  
“Blind Area” definition. Blind Area  
Is required when entering cabinet in QOE.

### Wall Blind

WBC

<u>Size Range</u>	Face Frame	Frameless
Width	*20 1/2” to **38 7/8”	*20 1/8” to **38 1/2”
Height	*6” to ***72”	*6” to ***72”
Depth	6” to 30”	6” to 30”

\*Cabinets at or near minimum may require slab door or modifications to door framing.

\*\*\*Doors over 48" High will have 2 panels



Please see p. 0.24 for  
“Blind Area” definition. Blind Area  
Is required when entering cabinet in QOE.

Blind will be closed  
With panel.

### Wall Blind Butt Doors

WBCBD

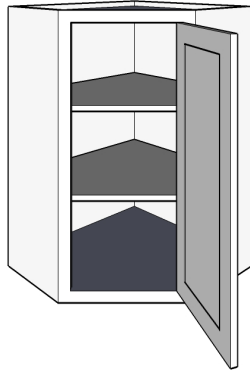
<u>Size Range</u>	Face Frame	Frameless
Width	*28” to 64 1/2”	*27 5/8” to 64 1/2”
Height	*8” to ***72”	*7 5/8” to ***72”
Depth	6” to 30”	6” to 30”

\*Cabinets at or near minimum may require slab door or modifications to door framing.

\*\*\*Doors over 48" High will have 2 panels

## Diagonal Corner Wall

WCS



See p. 0.19 for special note  
On frameless corner install

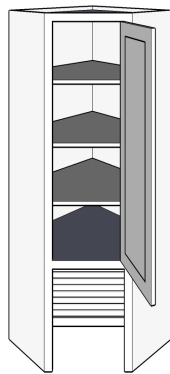
<u>Size Range</u>	Face Frame	Frameless
Width	21" x 21" to 33" x 33"	21" x 21" to 33" x 33"
Height	*8" to 72"	*7 5/8" to 72"
Depth	6" to 18 1/2"	6" to 18 1/2"

\*Cabinets at or near minimum may require slab door or modifications to door framing.

Lazy Susan Accessories Available

## Diagonal Corner Wall With Appliance Garage

WCA



See p. 0.19 for special note  
On frameless corner install

Tambour Door is Standard  
only Available in  
Red Oak, Maple, Paint Grade, & Cherry

For Hinged Door in place of Tambour  
Select +OAD Modification

<u>Size Range</u>	Face Frame	Frameless
Width	21" x 21" To 33" x 33"	21" x 21" To 33" x 33"
Height	*8" to 72"	*7 5/8" to 72"
Depth	6" to 13"	6" to 18 1/2"

Appliance section is finished to match exterior.

## Wall Appliance Garage

WAG



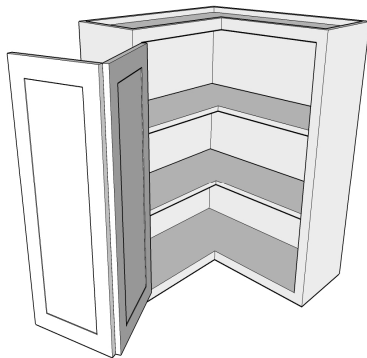
Tambour door is standard  
 Tambour available in:  
 Red Oak  
 Maple  
 Paint Grade  
 Cherry  
 Hinged door option in lieu of tambour  
 +OAD modification  
 Change hinge type for lift-up door  
 Can be built as one (BAO) with cabinet

<u>Size Range</u>	Face Frame	Frameless
Width	8" to 36"	8" to 36"
Height	12" to 24"	12" to 24"
Depth	6" to 24"	6" to 24"

Appliance section is finished to match exterior.

## Easy Reach Wall

WCP



Pie Cut Shape      Bi-fold Doors

<u>Size Range</u>	Face Frame	Frameless
Width	24" x 24" to 36" x 36"	24"x24" to 27"x27"
Height	*8" to ***72"	*7 5/8" to ***72"
Depth	12 1/2" to 18 1/2"	12 1/2" to 18 1/2"

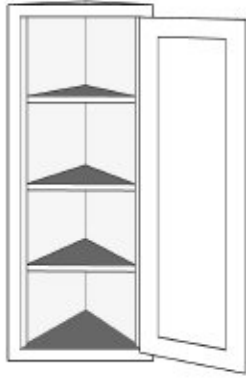
\*Cabinets at or near minimum may require slab door or modifications to door framing.

\*\*\*Doors over 48" High will have 2 panels



## Wall Angled End

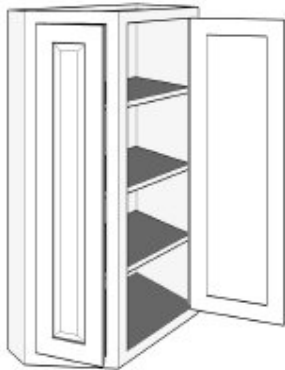
WAE



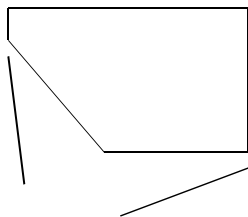
<u>Size Range</u>	Face Frame	Frameless
Width	13"	13"
Height	8" to ***72"	8" to ***72"
Depth	13"	13"

## Angled End 2 Door

WAE2D



<u>Size Range</u>	Face Frame	Frameless
Width	21" to 36"	21" to 36"
Height	8" to ***72"	8" to ***72"
Depth	12 1/2" to 13"	12 1/2" to 13"





### Wall End Open Shelf

WEOS

<u>Size Range</u>	Face Frame	Frameless
Width	3" to 12"	3" to 12"
Height	24" to 72"	24" to 72"
Depth	6" to 15 1/2"	6" to 15 1/2"

NUMBER OF FIXED SHELF LEVELS (SL) DEPEND UPON HEIGHT OF CABINET.

- |                       |      |
|-----------------------|------|
| 24" TO 29-15/16" HIGH | 2 SL |
| 30" TO 36" HIGH       | 3 SL |
| 36-1/16" TO 42" HIGH  | 4 SL |
| 42-1/16" TO 48" HIGH  | 5 SL |

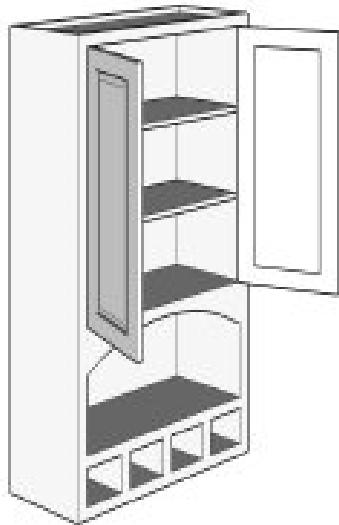
Top is square in all cases.

### Wall Desk Combo

Butt Doors

5" High Pigeon Holes

WDC



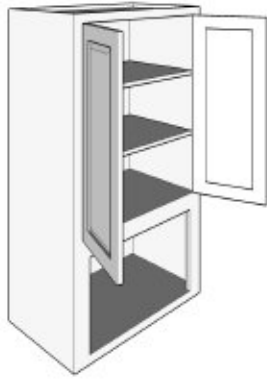
<u>Size Range</u>	Face Frame	Frameless
Width	24" to 42"	24" to 42"
Height	30" to 72"	30" to 72"
Depth	6" to 18"	6" to 18"

Includes Finished Interior in Open Area.

Optional Roman Arch Mid Rail Shown

## Wall Accessory with Butt Doors

WA



<u>Size Range</u>	Face Frame	Frameless
Width	24" to 36"	24" to 36"
Height	24" to 72"	24" to 72"
Depth	6" to 30"	6" to 30"

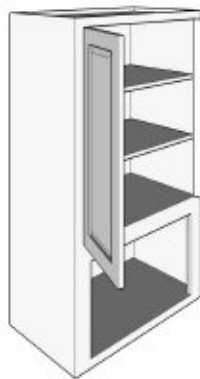
Includes Finished Interior in Open Area.

Open area can add:

Wine Rack lattice WRL

## Wall Accessory with 1 Door

WA1D

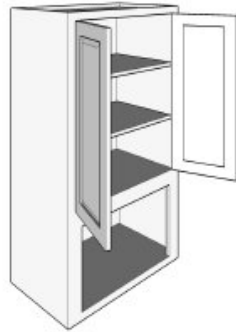


<u>Size Range</u>	Face Frame	Frameless
Width	9" to 27"	9" to 27"
Height	18" to 72"	18" to 72"
Depth	6" to 30"	6" to 30"

Includes Finished Interior in Open Area.

## Wall Built in Microwave With Butt Doors

WMB



NUMBER OF ADJUSTABLE SHELF LEVELS (SL)  
DEPEND UPON HEIGHT OF CABINET AND  
HEIGHT OF MICROWAVE OPENING.

IF NO SHELF LEVELS,  
OPENING IS NOT DRILLED FOR SHELVES.

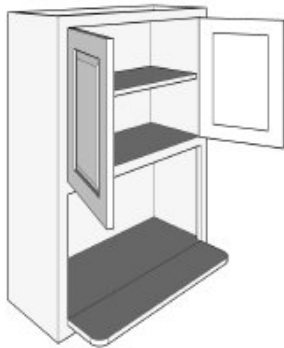
\*Please include microwave spec with your  
order. Microwave opening is sized to  
required spec.

<u>Size Range</u>	Face Frame	Frameless
Width	15 1/2" to 52"	15 1/2" to 52"
Height	30" to 72"	30" to 72"
Depth	6" to 30"	6" to 30"

Add +OF Modification if Overlay Frame is needed.  
Microwave Opening will not be Finished to Match.  
Microwave Opening will not have a Back.  
Please supply spec sheet with your order.

## Wall with Microwave Shelf With Butt Doors

WMWS



NUMBER OF ADJUSTABLE SHELF LEVELS (SL)  
DEPEND UPON HEIGHT OF CABINET AND  
HEIGHT OF MICROWAVE OPENING.

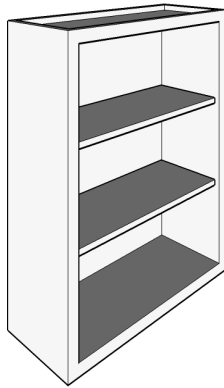
IF NO SHELF LEVELS,  
OPENING IS NOT DRILLED FOR SHELVES.

<u>Size Range</u>	Face Frame	Frameless
Width	15 1/2" to 52"	15 1/2" to 52"
Height	30" to 72"	30" to 72"
Depth	6" to 30"	6" to 30"

Includes Finished Interior in Open Area  
with full back.

Microwave opening height is 14-1/4".

Opening Height can be modified. Shelf depth  
is 16" and can be modified.



### Wall Open Hutch

WHU

<u>Size Range</u>	Face Frame	Frameless
Width	6" to 48"	6" to 48"
Height	8" to 120"	8" to 120"
Depth	6" to 24"	6" to 24"

Finished Interior is Standard



No bottom on cabinet

### Wall Open Book Shelf

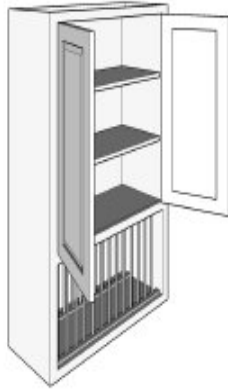
WOBS

<u>Size Range</u>	Face Frame	Frameless
Width	9" to 48"	9" to 48"
Height	12" to 78"	12" to 78"
Depth	6" to 24"	6" to 24"

When cabinet width exceeds 36", shelves will be 1" thick.

Finished Interior is Standard

Optional Arch Top Rail Shown



NUMBER OF ADJUSTABLE SHELF LEVELS (SL)  
DEPEND UPON HEIGHT OF CABINET LESS PLATE  
RACK.

IF NO SHELF LEVELS,  
OPENING IS NOT DRILLED FOR SHELVES.

## Wall Plate Display with Butt Doors

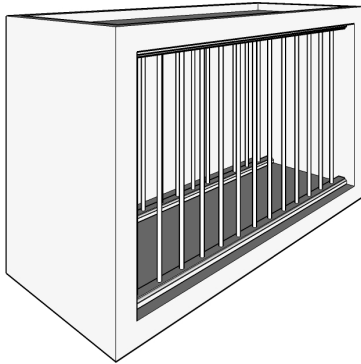
WPDBD

<u>Size Range</u>	Face Frame	Frameless
Width	24" to 36"	24" to 36"
Height	24" to 72"	24" to 72"
Depth	12" to 16"	12" to 16"

Includes Finished Interior in Open Area.

## Wall Plate Display

WPD

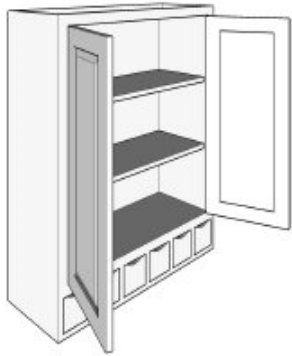


<u>Size Range</u>	Face Frame	Frameless
Width	24" to 36"	24" to 36"
Height	12" to 18 1/2"	12" to 18 1/2"
Depth	12" to 16"	12" to 16"

Includes Finished Interior.

## Wall with Spice Drawers

WSD



Spice drawer opening height is 5"

NUMBER OF ADJUSTABLE SHELF LEVELS (SL) DEPEND UPON HEIGHT OF CABINET LESS SPICE DRAWER HEIGHT.

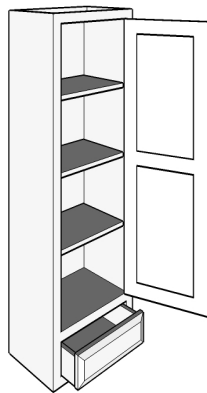
IF NO SHELF LEVELS, OPENING IS NOT DRILLED FOR SHELVES.

<u>Size Range</u>	Face Frame	Frameless
Width	24" to 42"	N/R
Height	27" to 72"	N/R
Depth	6" to 24"	N/R

24" to 29 15/16" Wide = 3 Drawers  
 30" to 35 15/16" Wide = 4 Drawers  
 36" to 42" Wide = 5 Drawers

## Wall 1 Door & 1 Drawer

W1D1D



See page 0.25 for opening dimensions

NUMBER OF ADJUSTABLE SHELF LEVELS (SL) DEPEND UPON HEIGHT OF CABINET LESS DRAWER HEIGHT.

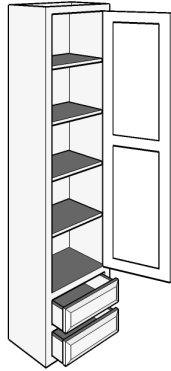
IF NO SHELF LEVELS, OPENING IS NOT DRILLED FOR SHELVES.

<u>Size Range</u>	Face Frame	Frameless
Width	8" to 26"	7 5/8" to 26"
Height	30" to 87"	30" to 87"
Depth	*12" to 24"	*12" to 24"

12" to 24" Deep will have Under-Mount Slides

\*9" Deep allowed but will have Side-Mount Slides

Slides are not available Below 9" Deep



### Wall 1 Door & 2 Drawer

W1D2D

<u>Size Range</u>	Face Frame	Frameless
Width	8" to 26"	7 5/8" to 26"
Height	42" to 87"	42" to 87"
Depth	12" to 24"	12" to 24"

NUMBER OF ADJUSTABLE SHELF LEVELS (SL)  
DEPEND UPON HEIGHT OF CABINET LESS  
DRAWER HEIGHT.

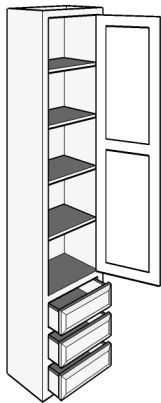
IF NO SHELF LEVELS,  
OPENING IS NOT DRILLED FOR SHELVES.

See page 0.26 for opening dimensions

12" to 24" Deep will have Under-Mount Slides

\*9" Deep allowed but will have Side-Mount Slides

Slides are not available Below 9" Deep



### Wall 1 Door 3 Drawers

W1D3D

<u>Size Range</u>	Face Frame	Frameless
Width	8" to 26"	7 5/8" to 26"
Height	42" to 87"	42" to 87"
Depth	12" to 24"	12" to 24"

NUMBER OF ADJUSTABLE SHELF LEVELS (SL)  
DEPEND UPON HEIGHT OF CABINET LESS  
DRAWER HEIGHT.

IF NO SHELF LEVELS,  
OPENING IS NOT DRILLED FOR SHELVES.

See page 0.27 for opening dimensions

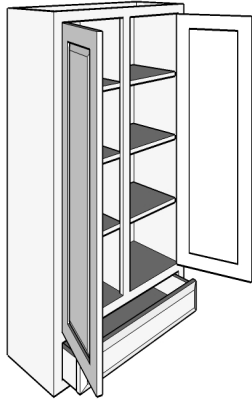
12" to 24" Deep will have Under-Mount Slides

\*9" Deep allowed but will have Side-Mount Slides

Slides are not available Below 9" Deep



NOT AVAILABLE IN FRAMELESS



**\*\*Optional Vertical Divider Shown  
Recommended Over 48" Required over 60" wide**

NUMBER OF ADJUSTABLE SHELF LEVELS (SL)  
DEPEND UPON HEIGHT OF CABINET LESS  
DRAWER HEIGHT.

IF NO SHELF LEVELS,  
OPENING IS NOT DRILLED FOR SHELVES.

**See page 0.25 for opening dimensions**

## Wall 2 Doors & 1 Drawer

W2D1D

<u>Size Range</u>	Face Frame	Frameless
Width	15 3/4" to **52"	15 1/4" to **52"
Height	30" to 87"	30" to 87"
Depth	12" to 24"	12" to 24"

12" to 24" Deep will have Under-Mount Slides

\*9" Deep allowed but will have Side-Mount Slides

Slides are not available Below 9" Deep

## Wall 2 Butt Doors & 1 Drawer

W2DBD1D



**See page 0.25 for opening dimensions**

NUMBER OF ADJUSTABLE SHELF LEVELS (SL)  
DEPEND UPON HEIGHT OF CABINET LESS  
DRAWER HEIGHT.

IF NO SHELF LEVELS,  
OPENING IS NOT DRILLED FOR SHELVES.

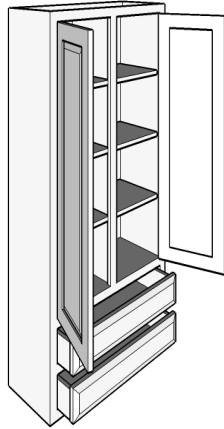
<u>Size Range</u>	Face Frame	Frameless
Width	15 3/4" to 52"	15 1/4" to 52"
Height	30" to 87"	30" to 87"
Depth	12" to 24"	12" to 24"

12" to 24" Deep will have Under-Mount Slides

\*9" Deep allowed but will have Side-Mount Slides

Slides are not available Below 9" Deep

NOT AVAILABLE IN FRAMELESS



See page 0.26 for opening dimensions

NUMBER OF ADJUSTABLE SHELF LEVELS (SL)  
DEPEND UPON HEIGHT OF CABINET LESS  
DRAWER HEIGHT.

IF NO SHELF LEVELS,  
OPENING IS NOT DRILLED FOR SHELVES.

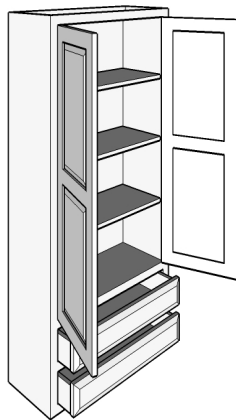
## Wall 2 Doors & 2 Drawers

W2D2D

<u>Size Range</u>	Face Frame	Frameless
Width	15 3/4" to 52"	15 1/4" to 52"
Height	42" to 87"	42" to 87"
Depth	12" to 24"	12" to 24"

12" to 24" Deep will have Under-Mount Slides  
\*9" Deep allowed but will have Side-Mount Slides  
Slides are not available Below 9" Deep

Optional Center Divider Shown



See page 0.26 for opening dimensions

NUMBER OF ADJUSTABLE SHELF LEVELS (SL)  
DEPEND UPON HEIGHT OF CABINET LESS  
DRAWER HEIGHT.

IF NO SHELF LEVELS,  
OPENING IS NOT DRILLED FOR SHELVES.

## Wall 2 Butt Doors & 2 Drawers

W2DBD2D

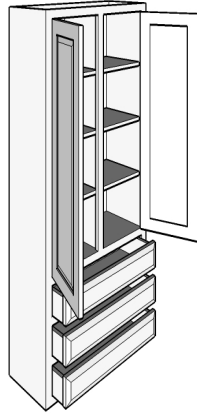
<u>Size Range</u>	Face Frame	Frameless
Width	15 3/4" to 52"	15 1/4" to 52"
Height	42" to 87"	42" to 87"
Depth	12" to 24"	12" to 24"

12" to 24" Deep will have Under-Mount Slides

\*9" Deep allowed but will have Side-Mount Slides

Slides are not available Below 9" Deep

NOT AVAILABLE IN FRAMELESS



NUMBER OF ADJUSTABLE SHELF LEVELS (SL)  
DEPEND UPON HEIGHT OF CABINET LESS  
DRAWER HEIGHT.

IF NO SHELF LEVELS,  
OPENING IS NOT DRILLED FOR SHELVES.

See page 0.27 for opening dimensions

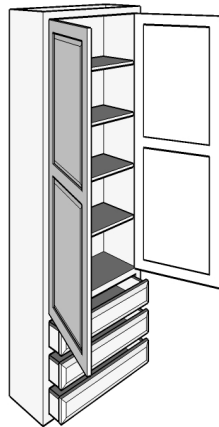
## Wall 2 Doors & 3 Drawers

W2D3D

<u>Size Range</u>	Face Frame	Frameless
Width	15 3/4" to 52"	15 1/4" to 52"
Height	42" to 87"	42" to 87"
Depth	12" to 24"	12" to 24"

12" to 24" Deep will have Under-Mount Slides  
\*9" Deep allowed but will have Side-Mount Slides  
Slides are not available Below 9" Deep

Optional Center Divider Shown



NUMBER OF ADJUSTABLE SHELF LEVELS (SL)  
DEPEND UPON HEIGHT OF CABINET LESS  
DRAWER HEIGHT.

IF NO SHELF LEVELS,  
OPENING IS NOT DRILLED FOR SHELVES.

See page 0.27 for opening dimensions

## Wall 2 Butt Doors & 3 Drawers

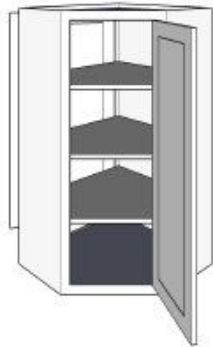
W2DBD3D

<u>Size Range</u>	Face Frame	Frameless
Width	15 3/4" to 52"	15 1/4" to 52"
Height	42" to 87"	42" to 87"
Depth	12" to 24"	12" to 24"

12" to 24" Deep will have Under-Mount Slides

\*9" Deep allowed but will have Side-Mount Slides

Slides are not available Below 9" Deep



Double Entry

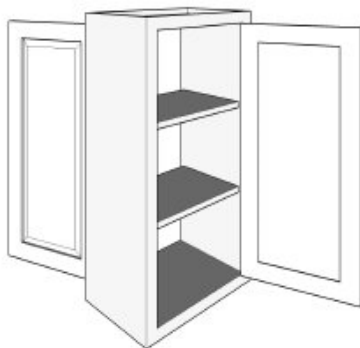
### Peninsula Corner Wall

WCD24

WCD27

<u>Size Range</u>	Face Frame	Frameless
Width	24" x 24" OR 27" x 27"	24" x 24" OR 27" x 27"
Height	8" to 72"	7 5/8" to 72"
24x24 Depth	12 1/2" to 13"	
27x27 Depth	15 1/2"	

Lazy Susan Accessories Available



Double Entry

### Peninsula Wall 2 Doors

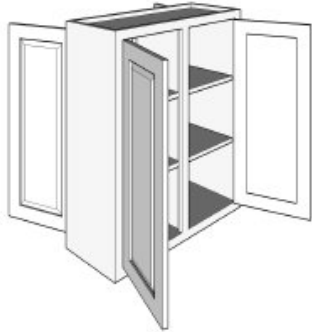
WDE2D

<u>Size Range</u>	Face Frame	Frameless
Width	*8" to 26"	*7 5/8" to 26"
Height	8" to ***72"	7 5/8" to ***72"
Depth	6" to 30"	

\*Cabinets at or near minimum may require slab door or modifications to door framing.

\*\*\*Doors over 48" High will have 2 panels

NOT AVAILABLE IN FRAMELESS



Double Entry

### Peninsula Wall 4 Doors

WDE4D

<u>Size Range</u>	Face Frame	Frameless
Width	*15 3/4" to **52"	*15 1/4" to **52"
Height	8" to ***72"	7 5/8" to ***72"
Depth	6" to 30"	6" to 30"

\*Cabinets at or near minimum may require slab door or modifications to door framing.

\*\*Optional Vertical Divider Shown Recommended Over 48"

\*\*\*Doors over 48" High will have 2 panels

### Peninsula Wall 4 Doors 2 Sets Butt Doors

WDE4DBD



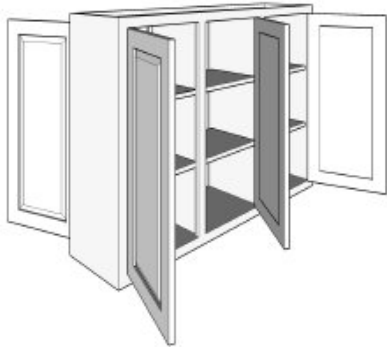
Double Entry

<u>Size Range</u>	Face Frame	Frameless
Width	*15 1/2" to 52"	*15 1/4" to 52"
Height	8" to ***72"	7 5/8" to ***72"
Depth	6" to 30"	6" to 30"

\*Cabinets at or near minimum may require slab door or modifications to door framing.

\*\*\*Doors over 48" High will have 2 panels

NOT AVAILABLE IN FRAMELESS



Double Entry

### Peninsula Wall 6 Doors

WDE6D

<u>Size Range</u>	Face Frame	Frameless
Width	*23 1/2" to **78"	*22 3/4" to **78"
Height	8" to ***72"	7 5/8" to ***72"
Depth	6" to 30"	6" to 30"

\*Cabinets at or near minimum may require slab door or modifications to door framing.

\*\*Optional Vertical Divider Shown (2)

Recommended Over 48" Required over 60" wide

\*\*\*Doors over 48" High will have 2 panels

NOT AVAILABLE IN FRAMELESS



Double Entry

### Peninsula Wall 6 Doors Butt Doors

WDE6DBD

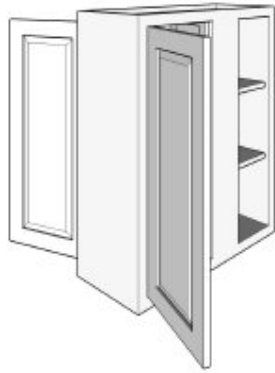
<u>Size Range</u>	Face Frame	Frameless
Width	*23 1/4" to **78"	*22 3/4" to **78"
Height	8" to ***72"	7 5/8" to ***72"
Depth	6" to 30"	6" to 30"

\*Cabinets at or near minimum may require slab door or modifications to door framing.

\*\*Optional Vertical Divider Shown (2)

Recommended Over 48" Required over 60" wide

\*\*\*Doors over 48" High will have 2 panels



BLIND  
WILL BE  
CLOSED  
WITH  
PANEL

Double Entry

### Peninsula Blind Wall

WBDE

<u>Size Range</u>	Face Frame	Frameless
Width	*20 1/2" to 38 7/8"	*20 1/8" to 38 1/2"
Height	8" to ***72"	7 5/8" to ***72"
Depth	6" to 30"	6" to 30"

Please see p. 0.24 for  
"Blind Area" definition. Blind Area  
Is required when entering cabinet in QOE.

\*Cabinets at or near minimum may require slab door or modifications to door framing.

\*\*\*Doors over 48" High will have 2 panels



Double Entry

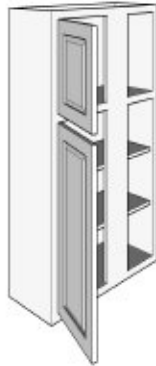
### Peninsula Blind Wall Butt Doors

WBDEBD

<u>Size Range</u>	Face Frame	Frameless
Width	*28" to 64 7/8"	*27 5/8" to 64 1/2"
Height	8" to ***72"	7 5/8" to ***72"
Depth	6" to 30"	6" to 30"

\*Cabinets at or near minimum may require slab door or modifications to door framing.

\*\*\*Doors over 48" High will have 2 panels



Please see p. 0.24 for "Blind Area" definition. Blind Area Is required when entering cabinet in QOE.

NUMBER OF ADJUSTABLE SHELF LEVELS (SL) DEPEND UPON HEIGHT OF CABINET LESS TOP OPENING HEIGHT.

IF NO SHELF LEVELS, OPENING IS NOT DRILLED FOR SHELVES.

TOP OPENING HEIGHT MUST BE SPECIFIED.

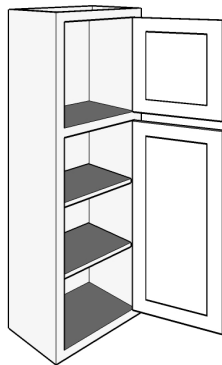
## Transom Blind Wall

TWBC

<u>Size Range</u>	Face Frame	Frameless
Width	*20 1/2" to 38 7/8"	*20 1/8" to 38 1/2"
Height	24" to ***84"	24" to ***84"
Depth	6" to 30"	6" to 30"

\*Cabinets at or near minimum may require slab door or modifications to door framing.

\*\*\*Doors over 48" High will have 2 panels



NUMBER OF ADJUSTABLE SHELF LEVELS (SL) DEPEND UPON HEIGHT OF CABINET LESS TOP OPENING HEIGHT.

IF NO SHELF LEVELS, OPENING IS NOT DRILLED FOR SHELVES.

TOP OPENING HEIGHT MUST BE SPECIFIED.

## Transom Wall 2 Doors

TW2D

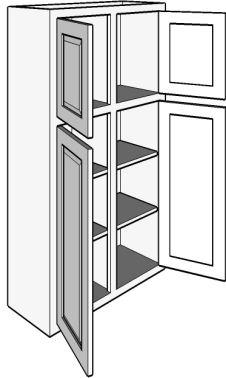
<u>Size Range</u>	Face Frame	Frameless
Width	*8" to 26"	*7 5/8" to 26"
Height	24" to ***84"	24" to ***84"
Depth	6" to 30"	6" to 30"

\*Cabinets at or near minimum may require slab door or modifications to door framing.

\*\*\*Doors over 48" High will have 2 panels



NOT AVAILABLE IN FRAMELESS



NUMBER OF ADJUSTABLE SHELF LEVELS (SL) DEPEND UPON HEIGHT OF CABINET LESS TOP OPENING HEIGHT.

IF NO SHELF LEVELS, OPENING IS NOT DRILLED FOR SHELVES.

TOP OPENING HEIGHT MUST BE SPECIFIED.

## Transom Wall 4 Doors

TW4D

<u>Size Range</u>	Face Frame	Frameless
Width	*15 3/4" to **51"	*15 1/4" to **51"
Height	24" to ***84"	24" to ***84"
Depth	6" to 30"	6" to 30"

\*Cabinets at or near minimum may require slab door or modifications to door framing.

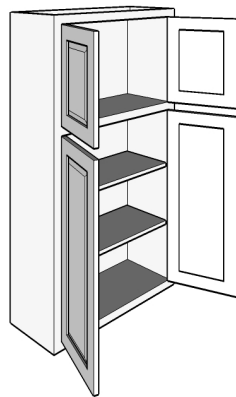
\*\*Optional Vertical Divider Shown

Recommended Over 48" Required over 60" wide

\*\*\*Doors over 48" High will have 2 panels

## Transom Wall 4 Butt Doors

TW4DBD



NUMBER OF ADJUSTABLE SHELF LEVELS (SL) DEPEND UPON HEIGHT OF CABINET LESS TOP OPENING HEIGHT.

IF NO SHELF LEVELS, OPENING IS NOT DRILLED FOR SHELVES.

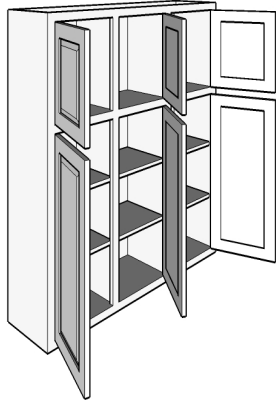
TOP OPENING HEIGHT MUST BE SPECIFIED.

<u>Size Range</u>	Face Frame	Frameless
Width	*15 1/2" to 51"	*15 1/4" to 51"
Height	24" to ***84"	24" to ***84"
Depth	6" to 30"	6" to 30"

\*Cabinets at or near minimum may require slab door or modifications to door framing.

\*\*\*Doors over 48" High will have 2 panels

NOT AVAILABLE IN FRAMELESS



NUMBER OF ADJUSTABLE SHELF LEVELS (SL) DEPEND UPON HEIGHT OF CABINET LESS TOP OPENING HEIGHT.

IF NO SHELF LEVELS, OPENING IS NOT DRILLED FOR SHELVES.

TOP OPENING HEIGHT MUST BE SPECIFIED.

## Transom Wall 6 Doors 2 Center Stile

TW6D

<u>Size Range</u>	Face Frame	Frameless
Width	*36" to **72"	*36" to **72"
Height	24" to ***84"	24" to ***84"
Depth	6" to 30"	6" to 30"

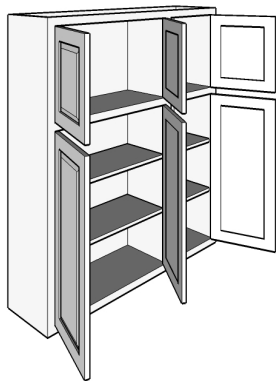
\*Cabinets at or near minimum may require slab door or modifications to door framing.

\*\*Optional Vertical Divider Shown (2)

Recommended Over 48" Required over 60" wide

\*\*\*Doors over 48" High will have 2 panels

NOT AVAILABLE IN FRAMELESS



NUMBER OF ADJUSTABLE SHELF LEVELS (SL) DEPEND UPON HEIGHT OF CABINET LESS TOP OPENING HEIGHT.

IF NO SHELF LEVELS, OPENING IS NOT DRILLED FOR SHELVES.

TOP OPENING HEIGHT MUST BE SPECIFIED.

## Transom Wall 6 Doors 1 Center Stile - 1 Set Butt Doors

TW6DBD

<u>Size Range</u>	Face Frame	Frameless
Width	*36" to **72"	*36" to **72"
Height	24" to ***84"	24" to ***84"
Depth	6" to 30"	6" to 30"

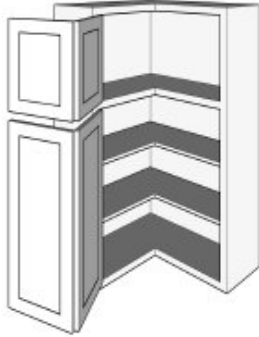
\*Cabinets at or near minimum may require slab door or modifications to door framing.

\*\*Optional Vertical Divider Shown

Recommended Over 48" Required over 60" wide

\*\*\*Doors over 48" High will have 2 panels

## TWCP



NUMBER OF ADJUSTABLE SHELF LEVELS (SL)  
DEPEND UPON HEIGHT OF CABINET LESS TOP  
OPENING HEIGHT.

IF NO SHELF LEVELS,  
OPENING IS NOT DRILLED FOR SHELVES.

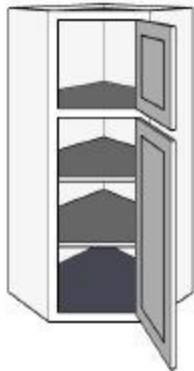
TOP OPENING HEIGHT MUST BE SPECIFIED.

### Transom Easy Reach Corner Wall

<u>Size Range</u>	Face Frame	Frameless
Width	24" to 36"	24" to 36"
Height	24" to ***84"	24" to ***84"
Depth	12 1/2" to 18 1/2"	12 1/2" to 18 1/2"

\*\*\*Doors over 48" High will have 2 panels

## TWCS



See p. 0.19 for special note  
On frameless corner install

NUMBER OF ADJUSTABLE SHELF LEVELS (SL)  
DEPEND UPON HEIGHT OF CABINET LESS TOP  
OPENING HEIGHT.

IF NO SHELF LEVELS,  
OPENING IS NOT DRILLED FOR SHELVES.

TOP OPENING HEIGHT MUST BE SPECIFIED.

### Transom Diagonal Corner Wall

<u>Size Range</u>	Face Frame	Frameless
Width	21" to 33"	21" to 36"
Height	24" to ***84"	24" to ***84"
Depth	6" to 18 1/2"	6" to 18 1/2"

\*\*\*Doors over 48" High will have 2 panels