

NUMBER OF ADJUSTABLE SHELF LEVELS
(SL) DEPEND UPON HEIGHT OF CABINET.

0" to 17-15/16" H - 0 SL
 18" to 26 15/16" H - 1 SL
 27" to 36" H - 2 SL
 36 1/16" to 48" H - 3 SL
 48 1/16" to 69 15/16" H - 4 SL
 70" to 79 15/16" - 5 SL
 80" to 90" - 6 SL
 90 1/16" to 102" - 7 SL
 102" to 120" - 8 SL

IF NO SHELF LEVELS,
 OPENING IS NOT DRILLED FOR SHELVES.
 SUBTRACT ONE SHELF FOR EACH DRAWER.

*Cabinets at or near minimum may require slab door or modifications to door framing.

***Doors over 48" High will have 2 panels in order to be covered by warpage warranty.

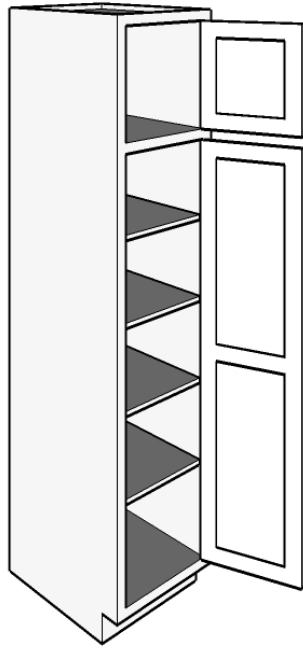
Drawer Slides

- 12" to 24" Deep will have Under-Mount Slides
- Shallow depth drawers (12 to 15" deep) that are over 24" wide should have optional stabilizer added (DS).
- 9" Deep allowed but will have Side-Mount Slides
- Slides are not available Below 9" Deep
- Deep drawers over 26" wide (30" Cabinet) will receive heavy duty glides
- All 27" deep drawer glides are Heavy Duty

Rollouts

- Mounted to floor if only one rollout is ordered (unless specified otherwise).
- Use Blum undermount glides – soft close
- Rollouts in cabinets deeper than 24" will be 21" deep with the extra depth to the back.
- 24" and 27" deep rollouts are available as special quote.

NOTES



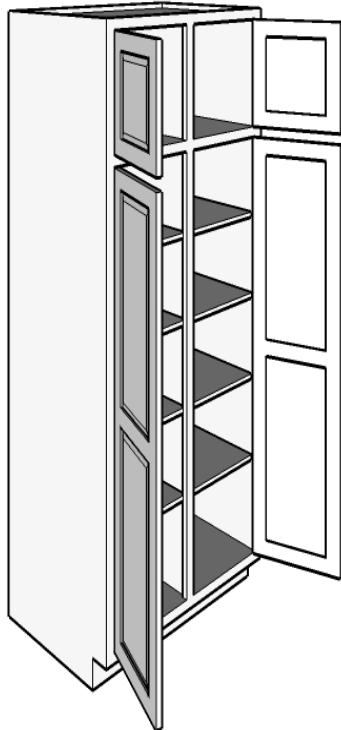
Tall Pantry 2 Door

TP2D

<u>Size Range</u>	Face Frame	Frameless
Width	*8" to 26"	*7-5/8" to 26"
Height	*48" to 120"	*48" to 120"
Depth	6" to 30"	6" to 30"

*Cabinets at or near minimum may require modifications to door framing.

NOT AVAILABLE IN FRAMELESS



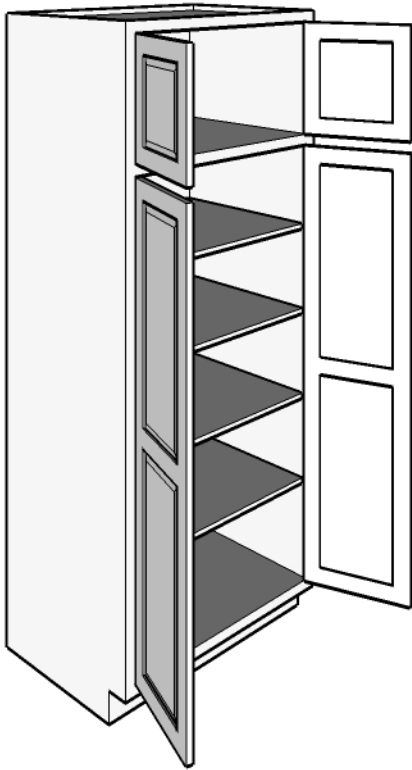
**Tall Pantry 4 Doors
Center Stile Top and Bottom**

TP4D

<u>Size Range</u>	Face Frame	Frameless
Width	*15 3/4" to 48"	*15 1/4" to 48"
Height	*48" to 120"	*48" to 120"
Depth	6" to 30"	6" to 30"

*Cabinets at or near minimum may require modifications to door framing.

** Optional Center Divider Shown



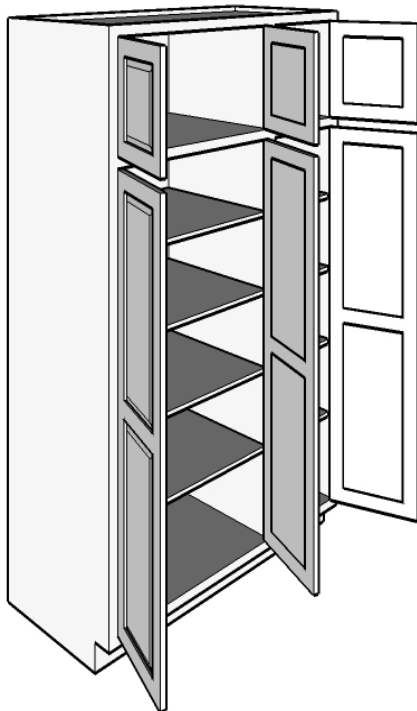
**Tall Pantry 4 Doors
2 Sets Butt Doors**

TP4DBD

<u>Size Range</u>	Face Frame	Frameless
Width	*15 1/2" to 48"	*15 1/8" to 48"
Height	*48" to 120"	*48" to 120"
Depth	6" to 30"	6" to 30"

*Cabinets at or near minimum may require modifications to door framing.

NOT AVAILABLE IN FRAMELESS



**Tall Pantry 6 Doors
1 Center Stile 1 Set Butt Doors**

TP6DBD

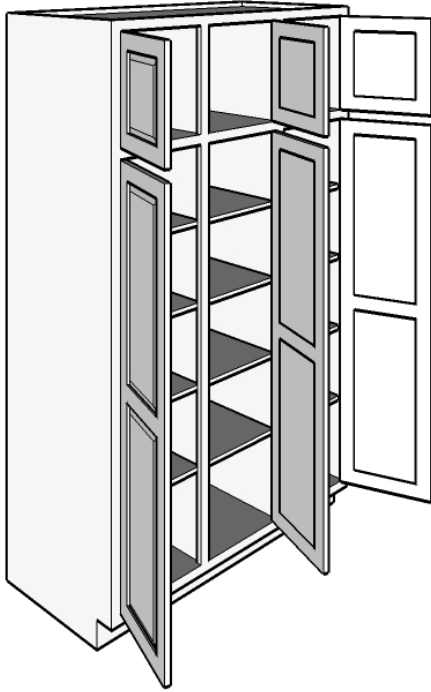
<u>Size Range</u>	Face Frame	Frameless
Width	*23 1/4" to 48"	*22 3/4" to 48"
Height	*48" to 120"	*48" to 120"
Depth	6" to 30"	6" to 30"

*Cabinets at or near minimum may require modifications to door framing.

Butt,R Hinging Shown

Optional Center Divider Shown

NOT AVAILABLE IN FRAMELESS



Tall Pantry 6 Doors 2 Center Stiles

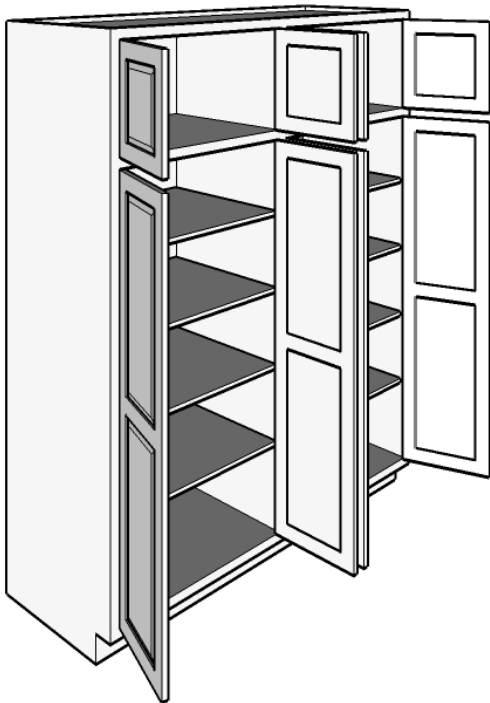
TP6D

<u>Size Range</u>	Face Frame	Frameless
Width	*23 1/2" to 48"	*22 3/4" to 48"
Height	*48" to 120"	*48" to 120"
Depth	6" to 30"	6" to 30"

*Cabinets at or near minimum may require modifications to door framing.

Optional Center Divider Shown

NOT AVAILABLE IN FRAMELESS



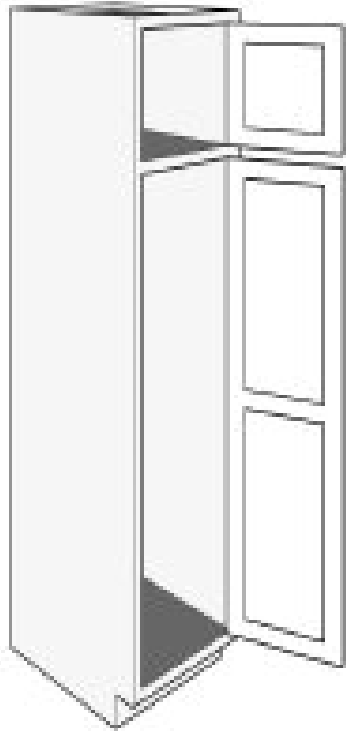
Tall Pantry 8 Doors – 1 Center Stiles 4 Sets Butt Doors

TP8D2BD

<u>Size Range</u>	Face Frame	Frameless
Width	*30 3/4" to 48"	*30 1/4" to 48"
Height	*48" to 120"	*48" to 120"
Depth	6" to 30"	6" to 30"

*Cabinets at or near minimum may require modifications to door framing.

Optional Center Divider Shown



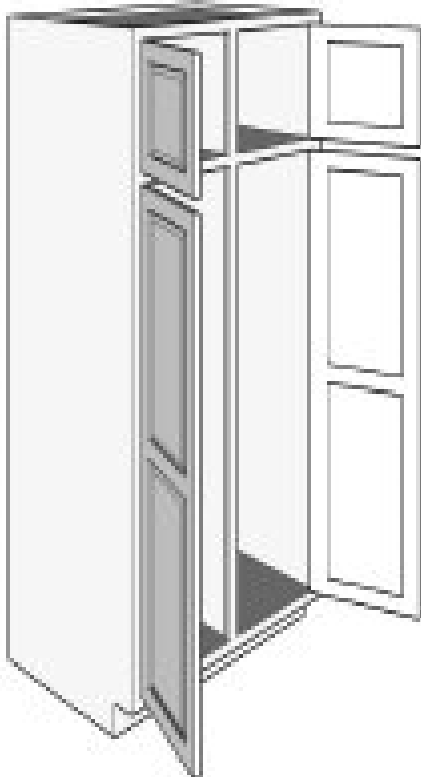
**Tall Broom Cabinet
2 Doors**

TB2D

<u>Size Range</u>	Face Frame	Frameless
Width	*8" to 26 3/8"	*7 5/8" to 26"
Height	*72" to 120"	*72" to 120"
Depth	6" to 30"	6" to 30"

*Cabinets at or near minimum may require modifications to door framing.

NOT AVAILABLE IN FRAMELESS

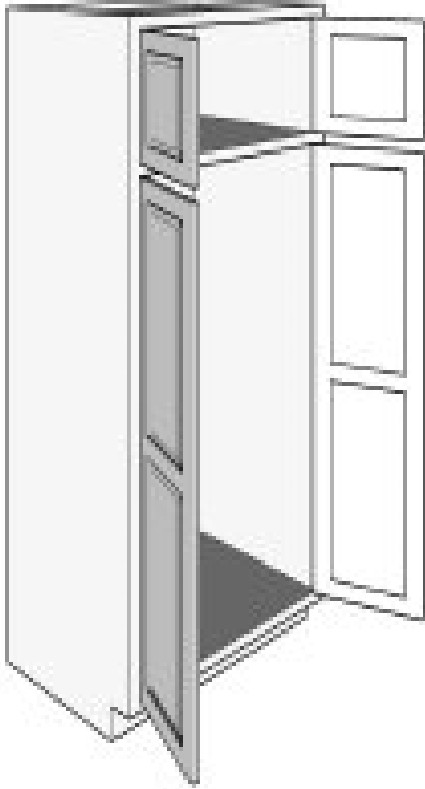


**Tall Broom Cabinet
4 Doors
1 Center Stiles**

W4D2BD

<u>Size Range</u>	Face Frame	Frameless
Width	*15 3/4" to 48"	*15 1/4" to 48"
Height	*72" to 120"	*72" to 120"
Depth	6" to 30"	6" to 30"

*Cabinets at or near minimum may require modifications to door framing.

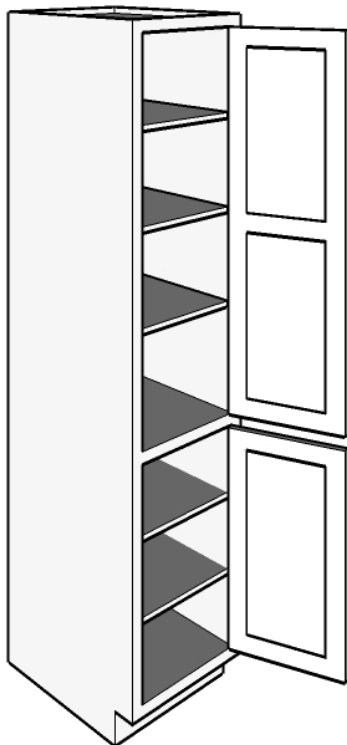


**Tall Broom Cabinet
2 Sets Butt Doors**

TB4DBD

<u>Size Range</u>	Face Frame	Frameless
Width	*15 1/2" to 48"	*15 1/8" to 48"
Height	*72" to 120"	*72" to 120"
Depth	6" to 30"	6" to 30"

*Cabinets at or near minimum may require modifications to door framing.

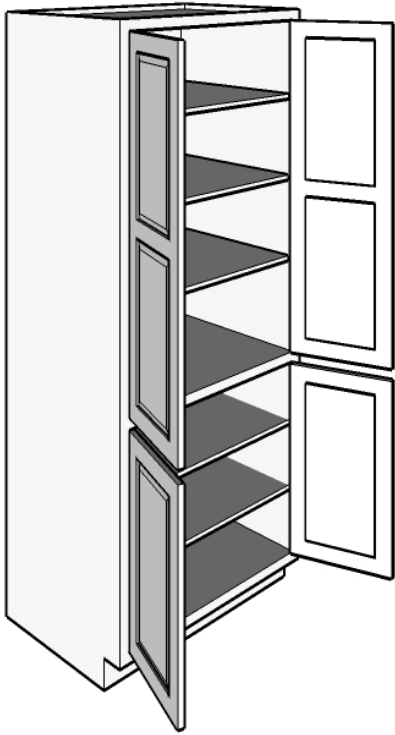


Tall Pantry Base Height Bottom Door

TPR2D

<u>Size Range</u>	Face Frame	Frameless
Width	*8" to 26 3/8"	*7 5/8" to 26"
Height	*72" to 120"	*72" to 120"
Depth	6" to 30"	6" to 30"

* Cabinets at or near minimum may require modifications to door framing.



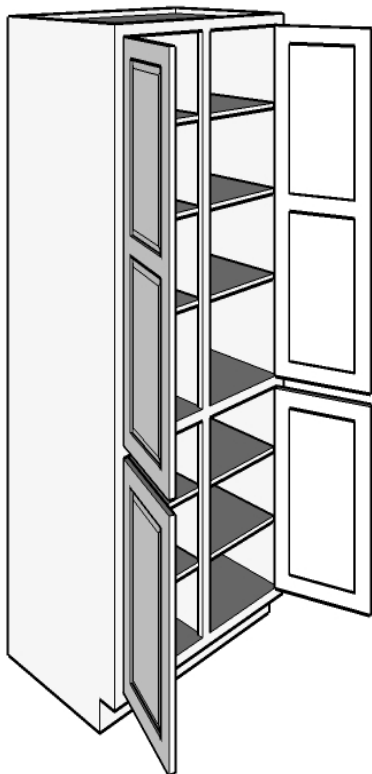
**Tall Pantry, Base Height Bottom Doors
2 Sets Butt Doors**

TPR4DBD

<u>Size Range</u>	Face Frame	Frameless
Width	*15 1/2" to 51"	*15 1/8" To 51"
Height	*72" to 120"	*72" to 120"
Depth	6" to 30"	6" to 30"

*Cabinets at or near minimum may require modifications to door framing.

NOT AVAILABLE IN FRAMELESS



**Tall Pantry, Base Height Bottom Doors
4 Doors, 1 Center Stile Top and Bottom**

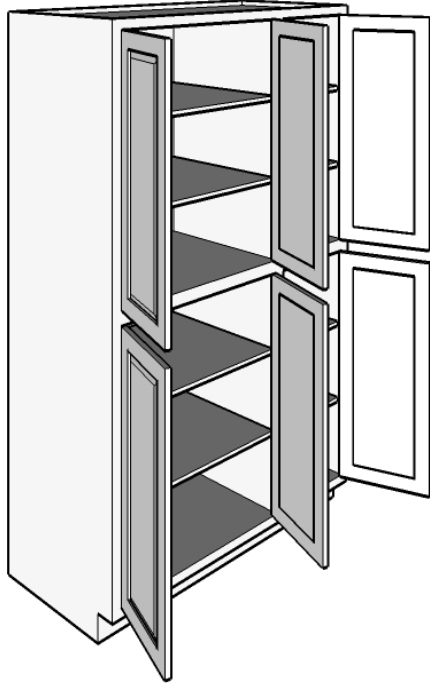
TPR4D

<u>Size Range</u>	Face Frame	Frameless
Width	*15 3/4" to 51"	*15 1/4" to 51"
Height	*72" to 120"	*72" to 120"
Depth	6" to 30"	6" to 30"

*Cabinets at or near minimum may require modifications to door framing.

Optional Center Divider Shown

NOT AVAILABLE IN FRAMELESS



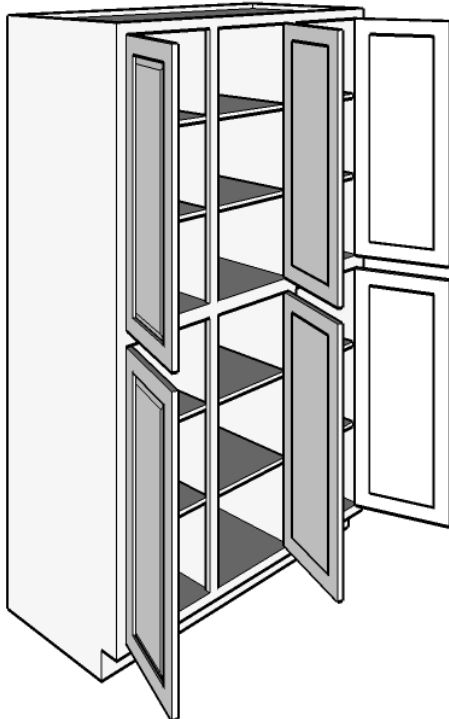
**Tall Pantry, Base Height Bottom Doors
1 Center Stile Top and Bottom
2 Sets Butt Doors**

TPR6DBD

<u>Size Range</u>	Face Frame	Frameless
Width	*23 1/4" to 51"	*22 3/4" to 51"
Height	*72" to 120"	*72" to 120"
Depth	6" to 30"	6" to 30"

*Cabinets at or near minimum may require modifications to door framing.

NOT AVAILABLE IN FRAMELESS



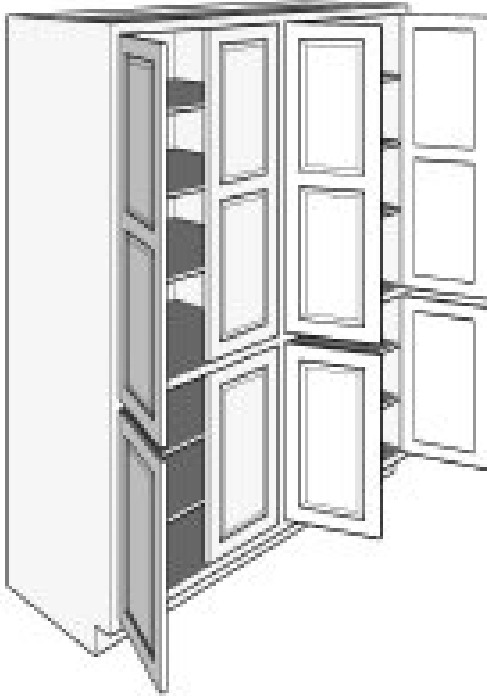
**Tall Pantry, Base Height Bottom Doors
6 Doors, 2 Center Stiles**

TPR6D

<u>Size Range</u>	Face Frame	Frameless
Width	*23 1/2" to 51"	*22 3/4" to 51"
Height	*72" to 120"	*72" to 120"
Depth	6" to 30"	6" to 30"

*Cabinets at or near minimum may require modifications to door framing.

NOT AVAILABLE IN FRAMELESS



**Tall Pantry, Base Height Bottom Doors
8 Doors, 1 Center Stile
4 Sets Butt Doors**

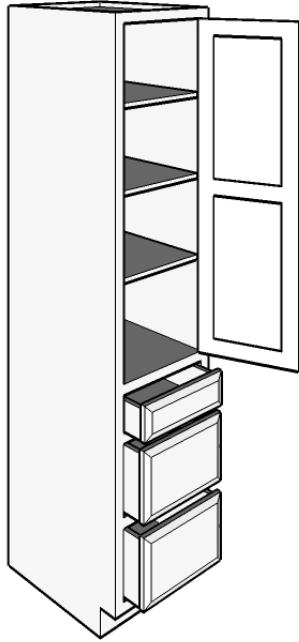
TPR8D2BD

<u>Size Range</u>	Face Frame	Frameless
Width	*30 3/4" to 51"	*30 1/4" to 51"
Height	72" to 120"	72" to 120"
Depth	6" to 30"	6" to 30"

*Cabinets at or near minimum may require modifications to door framing.

Tall Pantry 1 Door 3 Bottom Drawers

TP1D3D



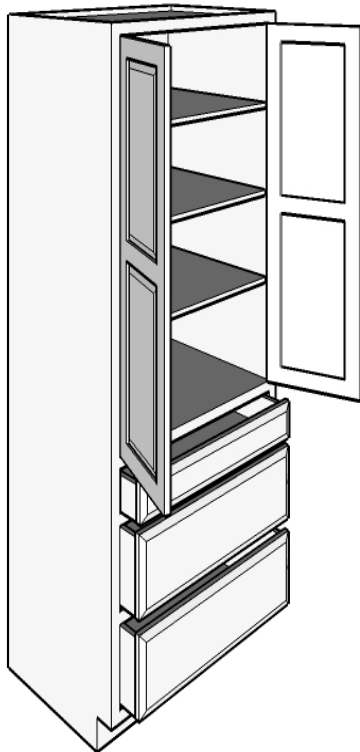
<u>Size Range</u>	Face Frame	Frameless
Width	*8" to 26 3/8"	*7 5/8" to 26"
Height	*72" to 120"	*72" to 120"
Depth	12" to 30"	12" to 30"

*Cabinets at or near minimum may require modifications to door framing.

Drawers to Line Up With 3 Drawer Base Cabinet

Tall Pantry 2 Butt Doors 3 Bottom Drawers

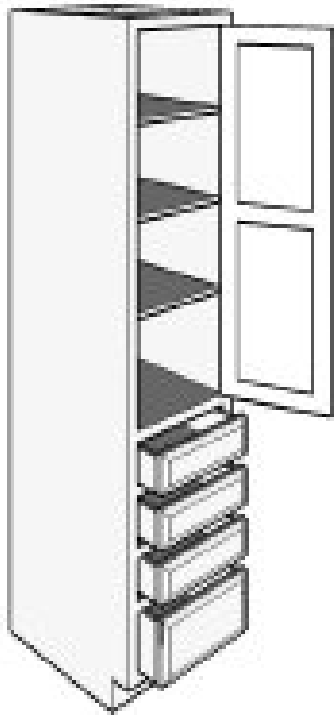
TP2DBD3D



<u>Size Range</u>	Face Frame	Frameless
Width	*15 1/2" to 48"	*15 1/8" to 48"
Height	72" to 120"	72" to 72"
Depth	12" to 30"	12" To 30"

*Cabinets at or near minimum may require modifications to door framing.

Drawers to Line Up With 3 Drawer Base Cabinet



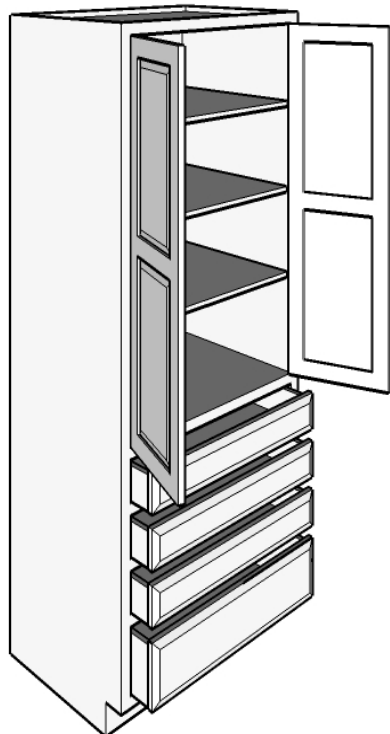
**Tall Pantry 1 Doors
4 Drawers**

TP1D4D

<u>Size Range</u>	Face Frame	Frameless
Width	*8" to 26 3/8"	*7 5/8" to 26"
Height	72" to 120"	72" to 120"
Depth	12" to 30"	12" to 30"

*Cabinets at or near minimum may require modifications to door framing.

Drawers to Line Up With 4 Drawer Base Cabinet



**Tall Pantry 2 Butt Doors
4 Drawers**

TP1D4D

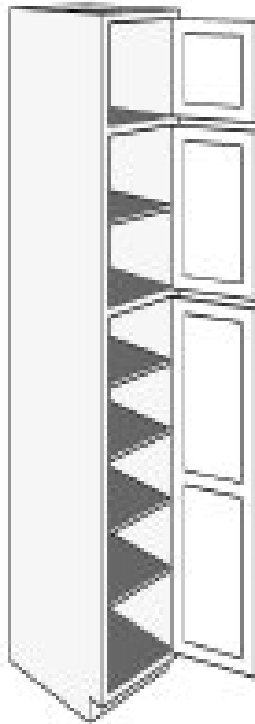
<u>Size Range</u>	Face Frame	Frameless
Width	*15 1/2" to 48"	*15 1/8" to 48"
Height	72" to 120"	72" to 120"
Depth	12" to 30"	12" to 30"

*Cabinets at or near minimum may require modifications to door framing.

Drawers to Line Up With 4 Drawer Base Cabinet

Tall Pantry With Transom 3 Doors

TPT3D

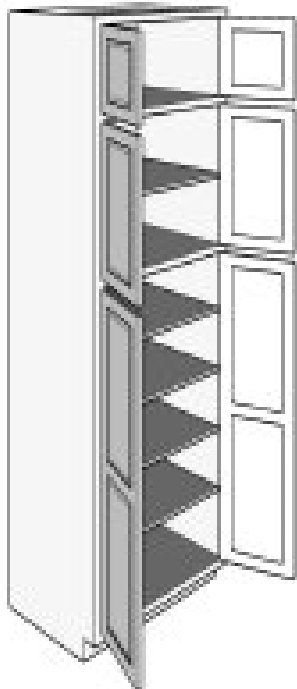


<u>Size Range</u>	Face Frame	Frameless
Width	*8" to 26 3/8"	*7 5/8" to 26"
Height	96" to 120"	96" to 120"
Depth	6" to 30"	6" to 30"

*Cabinets at or near minimum may require modifications to door framing.

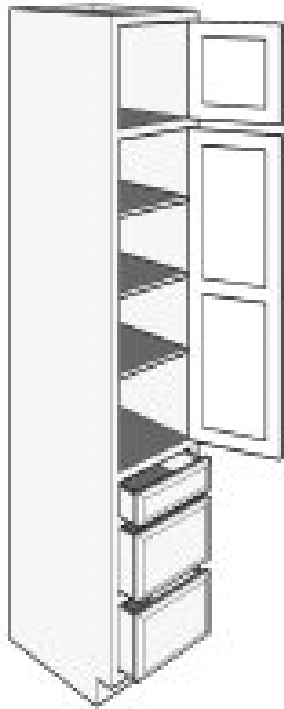
Tall Pantry with Transom 3 Sets Butt Doors

TPT6DBD



<u>Size Range</u>	Face Frame	Frameless
Width	*15 3/4" to 48"	*15 1/2" to 48"
Height	96" to 120"	96" to 120"
Depth	6" to 30"	6" to 30"

*Cabinets at or near minimum may require modifications to door framing.



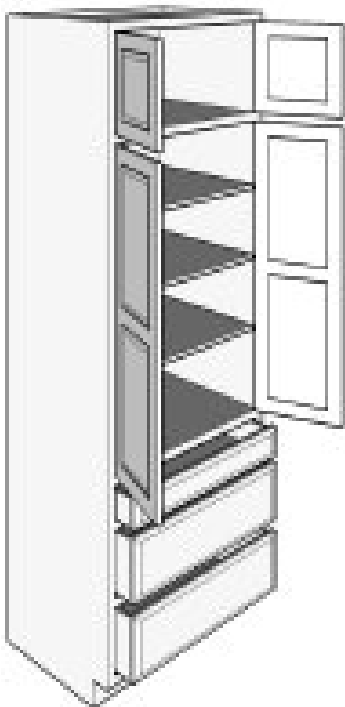
**Tall Pantry with Transom
2 Doors, 3 Bottom Drawers**

TPT1D3D

<u>Size Range</u>	Face Frame	Frameless
Width	*8" to 26 3/8"	*7 5/8" to 26"
Height	96" to 120"	96" to 120"
Depth	12 1/2" to 30"	12 1/2" to 30"

*Cabinets at or near minimum may require modifications to door framing.

Drawers to Line Up With 3 Drawer Base Cabinet



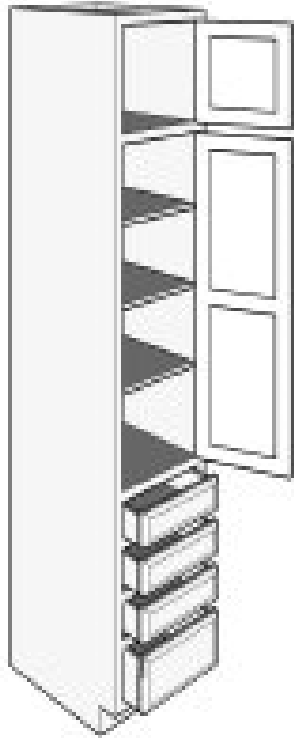
**Tall Pantry with Transom
2 Sets Butt Doors
3 Bottom Drawers**

TPT2DBD3D

<u>Size Range</u>	Face Frame	Frameless
Width	*15 1/2" to 26 3/8"	*15 1/8" to 26"
Height	96" to 120"	96" to 120"
Depth	12 1/2" to 30"	12 1/2" to 30"

*Cabinets at or near minimum may require modifications to door framing.

Drawers to Line Up With 3 Drawer Base Cabinet



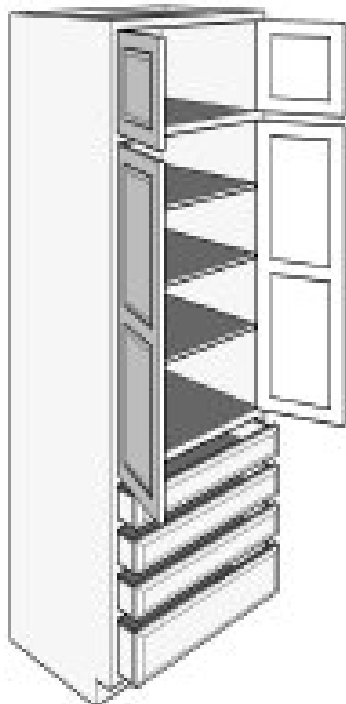
**Tall Pantry with Transom
2 Doors 4 Drawers**

TPT1D4D

<u>Size Range</u>	Face Frame	Frameless
Width	*8" to 26 3/8"	7 5/8" to 26"
Height	96" to 120"	96" to 120"
Depth	12 1/2" to 30"	12 1/2" to 30"

*Cabinets at or near minimum may require modifications to door framing.

Drawers to Line Up With 4 Drawer Base Cabinet



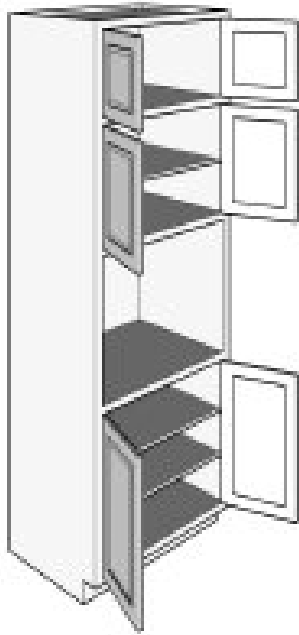
**Tall Pantry with Transom
2 Sets Butt Doors
4 Bottom Drawers**

TP2DBD4D

<u>Size Range</u>	Face Frame	Frameless
Width	15 1/2" to 26 3/8"	15 1/8" to 26"
Height	96" to 120"	96" to 120"
Depth	12 1/2" to 30"	12 1/2" to 30"

*Cabinets at or near minimum may require modifications to door framing.

Drawers to Line Up With 4 Drawer Base Cabinet



**Tall Single Oven with Transom
3 Sets Butt Doors**

TTSOV

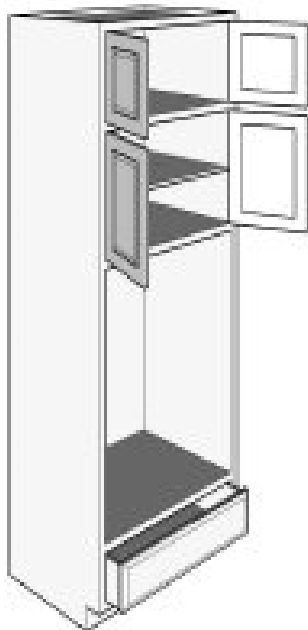
<u>Size Range</u>	Face Frame	Frameless
Width	*24 to 39"	*24" to 39"
Height	96" to 120"	96" to 120"
Depth	24" to 30"	24" to 30"

*Cabinets at or near minimum may require modifications to door framing.

FRAMELESS: Cabinet width should be equal to the oven width

FRAMED: Cabinet width should be 3" greater than the oven width

*Framed Flush Install – size overall cabinet width by adding 3" to required flush install opening width.



**Tall Double Oven with Transom
2 Sets Butt Doors, 1 Drawer**

TTDOV

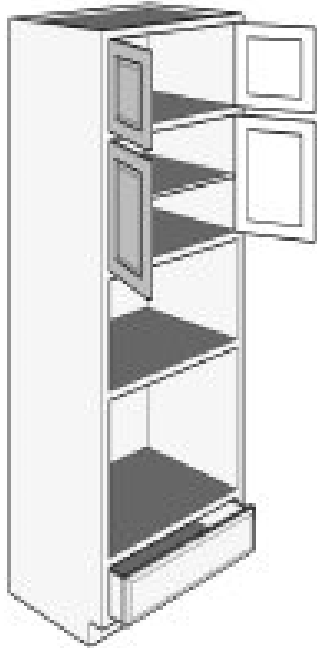
<u>Size Range</u>	Face Frame	Frameless
Width	*24" to 39"	24 to 39"
Height	96" to 120"	96" to 120"
Depth	24" to 30"	24" to 30"

*Cabinets at or near minimum may require modifications to door framing.

FRAMELESS: Cabinet width should be equal to the oven width

FRAMED: Cabinet width should be 3" greater than the oven width

*Framed Flush Install – size overall cabinet width by adding 3" to required flush install opening width.



**Tall Single Oven, Microwave with Transom
2 Sets Butt Doors 1 Drawer**

TTSOMC

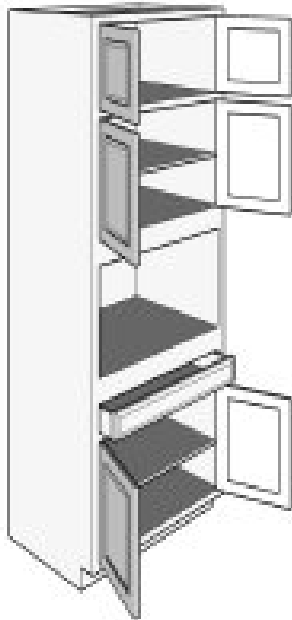
<u>Size Range</u>	Face Frame	Frameless
Width	*24" to 39"	24" to 39"
Height	96" to 120"	96" to 120"
Depth	24" to 30"	24" to 30"

*Cabinets at or near minimum may require modifications to door framing.

FRAMELESS: Cabinet width should be equal to the oven width

FRAMED: Cabinet width should be 3" greater than the oven width

*Framed Flush Install – size overall cabinet width by adding 3" to required flush install opening width.



**Tall Microwave with Transom
3 Sets Butt Doors, 1 Drawer**

TTMC

<u>Size Range</u>	Face Frame	Frameless
Width	*24" to 39"	24" to 39"
Height	96" to 120"	96" to 120"
Depth	24" to 30"	24" to 30"

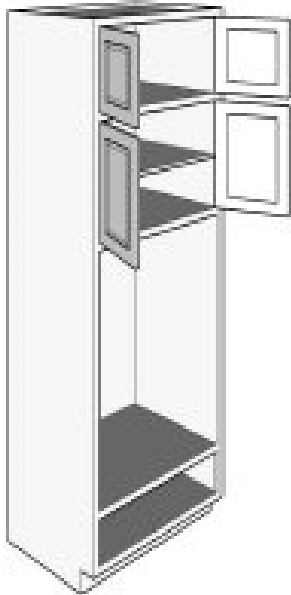
*Cabinets at or near minimum may require modifications to door framing.

FRAMELESS: Cabinet width should be equal to the oven width

FRAMED: Cabinet width should be 3" greater than the oven width

*Framed Flush Install – size overall cabinet width by adding 3" to required flush install opening width.

Tall Double Oven / Warming Drawer Combo with Transom 2 Sets Butt Doors



TTDOVWD

<u>Size Range</u>	Face Frame	Frameless
Width	*24" to 39"	*24" to 39"
Height	96" to 120"	96" to 120"
Depth	24" to 30"	24" to 30"

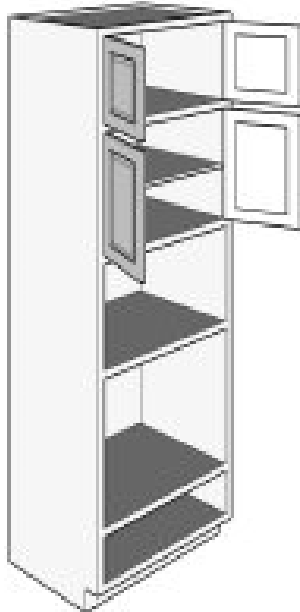
*Cabinets at or near minimum may require modifications to door framing.

FRAMELESS: Cabinet width should be equal to the oven width

FRAMED: Cabinet width should be 3" greater than the oven width

*Framed Flush Install – size overall cabinet width by adding 3" to required flush install opening width.

Tall Single Oven / Microwave / Warming Drawer Combo with Transom 2 Sets Butt Doors



TTSOMWD

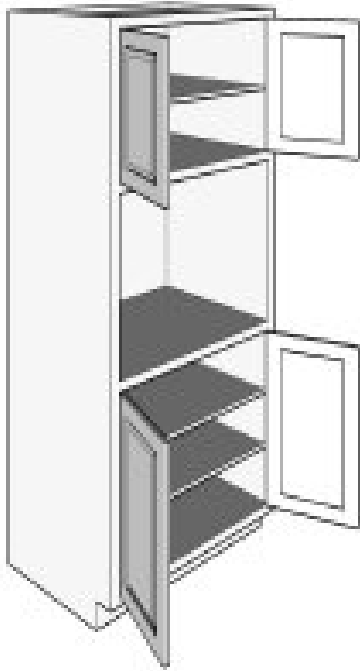
<u>Size Range</u>	Face Frame	Frameless
Width	*24" to 39"	*24" to 39"
Height	96" to 120"	96" to 120"
Depth	24" to 30"	24" to 30"

*Cabinets at or near minimum may require modifications to door framing.

FRAMELESS: Cabinet width should be equal to the oven width

FRAMED: Cabinet width should be 3" greater than the oven width

*Framed Flush Install – size overall cabinet width by adding 3" to required flush install opening width.



**Tall Single Oven
2 Sets Butt Doors**

TSOV

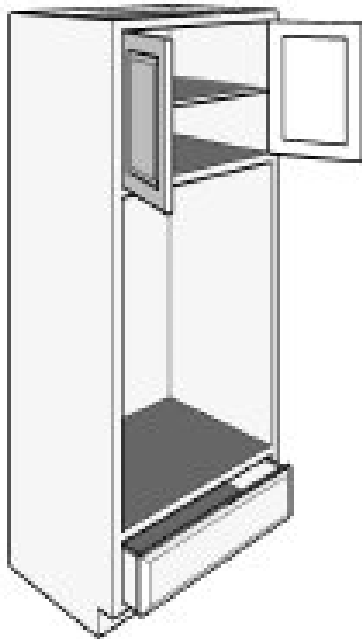
<u>Size Range</u>	Face Frame	Frameless
Width	*24" to 39"	*24" to 39"
Height	72" to 120"	72" to 120"
Depth	24" to 30"	24" to 30"

*Cabinets at or near minimum may require modifications to door framing.

FRAMELESS: Cabinet width should be equal to the oven width

FRAMED: Cabinet width should be 3" greater than the oven width

*Framed Flush Install – size overall cabinet width by adding 3" to required flush install opening width.



**Tall Double Oven
1 Sets Butt Doors, 1 Drawer**

TDOV

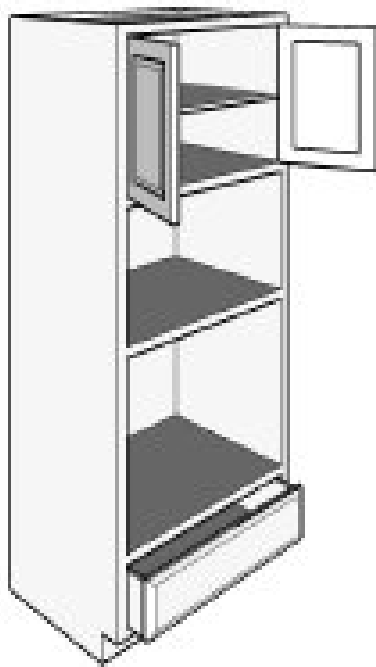
<u>Size Range</u>	Face Frame	Frameless
Width	*24" to 39"	24 to 39"
Height	72" to 120"	72" to 120"
Depth	24" to 30"	24" to 30"

*Cabinets at or near minimum may require modifications to door framing.

FRAMELESS: Cabinet width should be equal to the oven width

FRAMED: Cabinet width should be 3" greater than the oven width

*Framed Flush Install – size overall cabinet width by adding 3" to required flush install opening width.



**Tall Single Oven / Microwave
1 Sets Butt Doors, 1 Drawer**

TSOMC

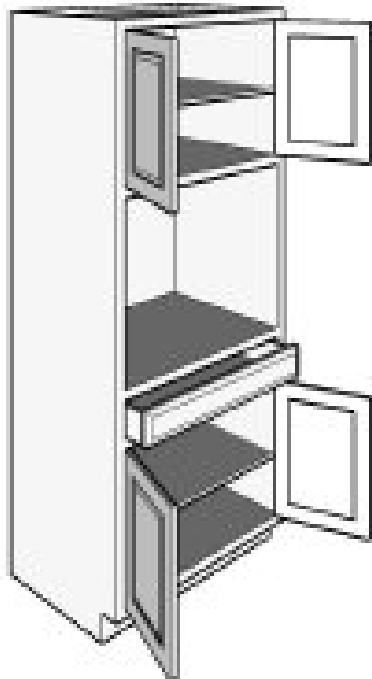
<u>Size Range</u>	Face Frame	Frameless
Width	*24” to 39”	*24” to 39”
Height	72” to 120”	72” to 120”
Depth	24” to 30”	24” to 30”

*Cabinets at or near minimum may require modifications to door framing.

FRAMELESS: Cabinet width should be equal to the oven width

FRAMED: Cabinet width should be 3” greater than the oven width

*Framed Flush Install – size overall cabinet width by adding 3” to required flush install opening width.



**Tall Microwave
2 Sets Butt Doors, 1 Drawer**

TMC

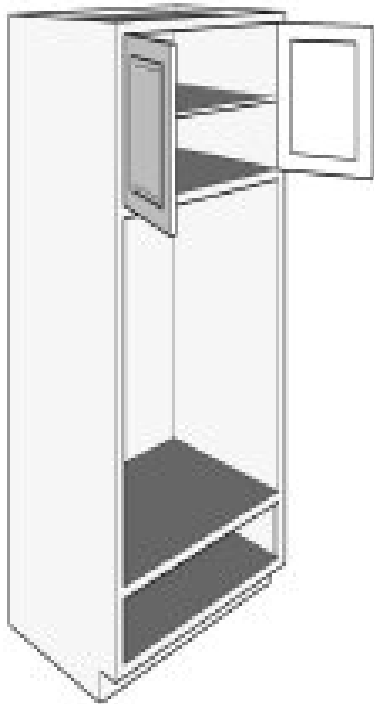
<u>Size Range</u>	Face Frame	Frameless
Width	*24” to 39”	24 to 39”
Height	72” to 120”	72” to 120”
Depth	24” to 30”	24” to 30”

*Cabinets at or near minimum may require modifications to door framing.

FRAMELESS: Cabinet width should be equal to the oven width

FRAMED: Cabinet width should be 3” greater than the oven width

*Framed Flush Install – size overall cabinet width by adding 3” to required flush install opening width.



**Tall Double Oven Warming Drawer Combo
1 Sets Butt Doors**

TDOVWD

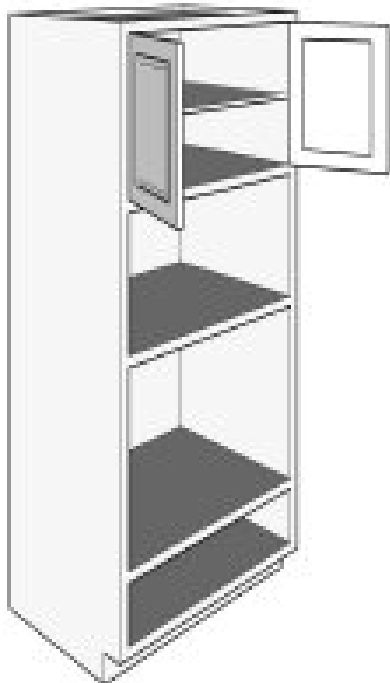
<u>Size Range</u>	Face Frame	Frameless
Width	*24” to 39”	*24” to 39”
Height	72” to 120”	72” to 120”
Depth	24” to 30”	24” to 30”

*Cabinets at or near minimum may require modifications to door framing.

FRAMELESS: Cabinet width should be equal to the oven width

FRAMED: Cabinet width should be 3” greater than the oven width

*Framed Flush Install – size overall cabinet width by adding 3” to required flush install opening width.



**Tall Single Oven, Microwave,
Warming Drawer Combo
1 Sets Butt Doors**

TSOMWD

<u>Size Range</u>	Face Frame	Frameless
Width	*24” to 39”	24 to 39”
Height	72” to 120”	72” to 120”
Depth	24” to 30”	24” to 30”

*Cabinets at or near minimum may require modifications to door framing.

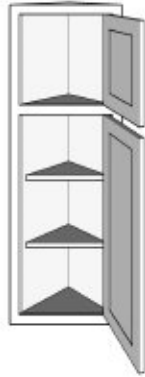
FRAMELESS: Cabinet width should be equal to the oven width

FRAMED: Cabinet width should be 3” greater than the oven width

*Framed Flush Install – size overall cabinet width by adding 3” to required flush install opening width.

Tall Angled End 2 Doors

TAE

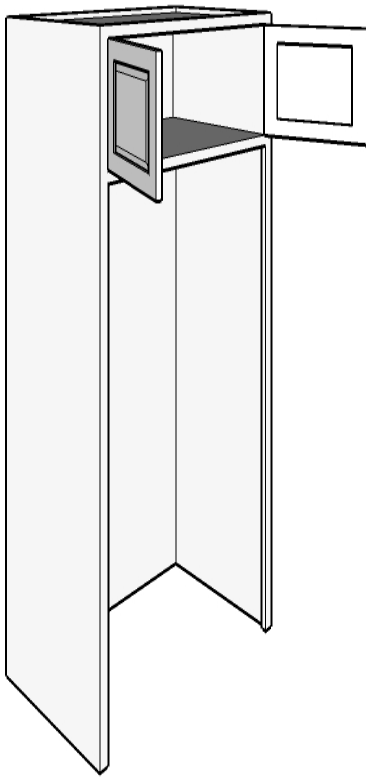


NUMBER OF ADJUSTABLE SHELF LEVELS (SL) DEPEND UPON HEIGHT OF CABINET.

IF NO SHELF LEVELS,
OPENING IS NOT DRILLED FOR SHELVES.

<u>Size Range</u>	Face Frame	Frameless
Width	*13	13
Height	72" to 120"	72" to 120"
Depth	13	13

*Cabinets at or near minimum may require modifications to door framing.



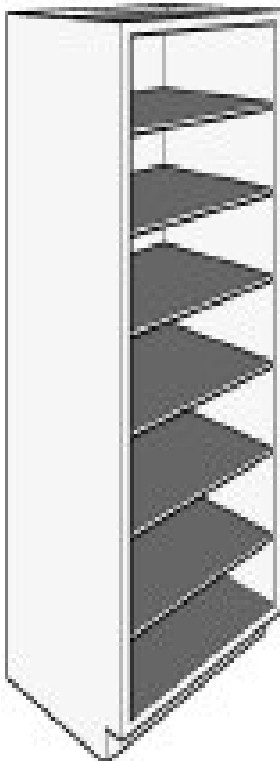
Tall Refrigerator Cabinet 1 Sets Butt Doors

TREF

<u>Size Range</u>	Face Frame	Frameless
Width	*18" to 51"	*18" to 51"
Height	*81 ½" to 120"	*81 ½" to 120"
Depth	24" to 30"	24" to 30"

*Cabinets at or near minimum may require modifications to door framing.

Bottom Opening comes Finished Interior with 4" Flush Inside Returns optional



Tall Bookcase

TBK

<u>Size Range</u>	Face Frame	Frameless
Width	6" to 48"	6" to 48"
Height	48" to 120"	48" to 120"
Depth	3" to 30"	3" to 30"

Standard comes with Flush Toe, Finished Interior and Fixed Floor Set at 34 ½" High