

NUMBER OF ADJUSTABLE SHELF LEVELS
(SL) DEPEND UPON HEIGHT OF CABINET.

0" to 17-15/16" H - 0 SL
 18" to 26 15/16" H - 1 SL
 27" to 36" H - 2 SL
 36 1/16" to 48" H - 3 SL
 48 1/16" to 69 15/16" H - 4 SL
 70" to 79 15/16" - 5 SL
 80" to 90" - 6 SL
 90 1/16" to 102" - 7 SL
 102" to 120" - 8 SL

IF NO SHELF LEVELS,
 OPENING IS NOT DRILLED FOR SHELVES.
 SUBTRACT ONE SHELF FOR EACH DRAWER.

*Cabinets at or near minimum may require slab door or modifications to door framing.

***Doors over 48" High will have 2 panels in order to be covered by warpage warranty.

Drawer Slides

- 12" to 24" Deep will have Under-Mount Slides
- Shallow depth drawers (12 to 15" deep) that are over 24" wide should have optional stabilizer added (DS).
- 9" Deep allowed but will have Side-Mount Slides
- Slides are not available Below 9" Deep
- Deep drawers over 26" wide (30" Cabinet) will receive heavy duty glides
- All 27" deep drawer glides are Heavy Duty

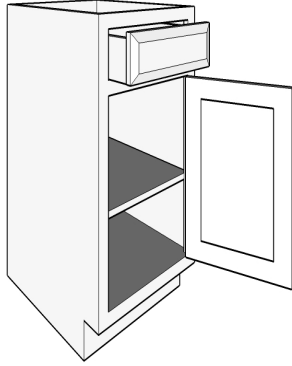
Rollouts

- Mounted to floor if only one rollout is ordered (unless specified otherwise).
- Use Blum undermount glides – soft close
- Rollouts in cabinets deeper than 24" will be 21" deep with the extra depth to the back.
- 24" and 27" deep rollouts are available as special quote.

NOTES

Vanity Base 1 Door 1 Drawer

VB1D1D

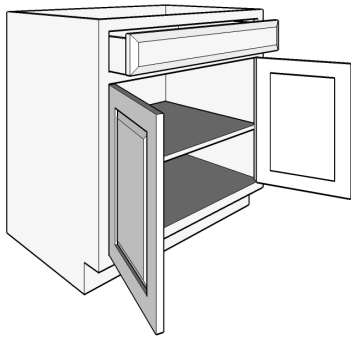


<u>Size Range</u>	Face Frame	Frameless
Width	*10" to 24"	*10" to 24"
Height	*30" to 42"	*30" to 42"
Depth	12" to 30"	12" to 30"

*Cabinets at or near minimum may require modifications to door or drawer.

Vanity Base 2 Butt Doors 1 Drawer

VB2DBD1D

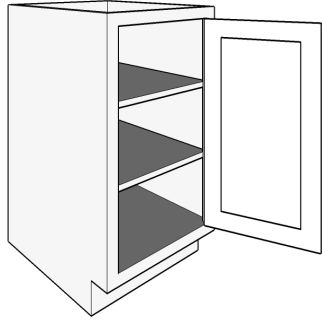


<u>Size Range</u>	Face Frame	Frameless
Width	*21" to 42"	*21" to 42"
Height	*30 to 42"	*30" to 42"
Depth	12" to 30"	12" to 30"

*Cabinets at or near minimum may require modifications to door framing.

Vanity Base Full Door 1 Door

VBF1D

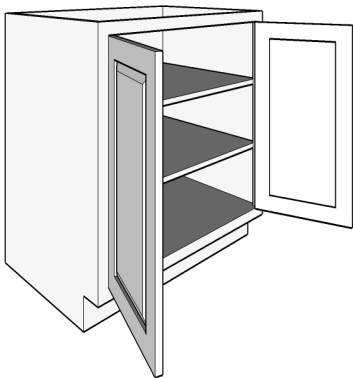


<u>Size Range</u>	Face Frame	Frameless
Width	*9" to 24"	*9" to 24"
Height	18 to 42"	18" to 42"
Depth	6" to 30"	6" to 30"

*Cabinets at or near minimum may require modifications to door framing.

Vanity Base Full Door 2 Doors - Butt Doors

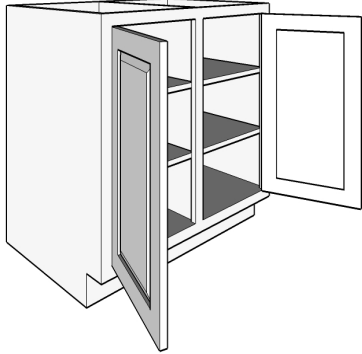
VBF2DBD



<u>Size Range</u>	Face Frame	Frameless
Width	*21" to 52 1/2"	*21" to 52 1/2"
Height	18 to 42"	18" to 42"
Depth	6" to 30"	6" to 30"

*Cabinets at or near minimum may require modifications to door or drawer.

NOT AVAILABLE IN FRAMELESS



Vanity Base Full Door 2 Doors, Center Stile

VBF2D

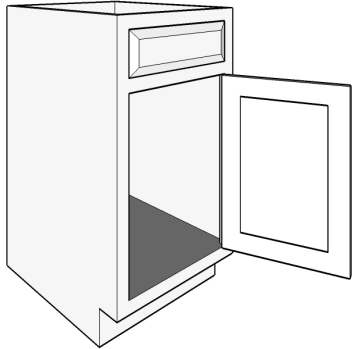
<u>Size Range</u>	Face Frame	Frameless
Width	*21” to 51”	*21” to 51”
Height	18” to 42”	18” to 42”
Depth	6” to 30”	6” to 30”

*Cabinets at or near minimum may require modifications to door or drawer.

Optional Center Divider Shown

**Vanity Sink Base
1 Door – 1 False Head**

VS1D



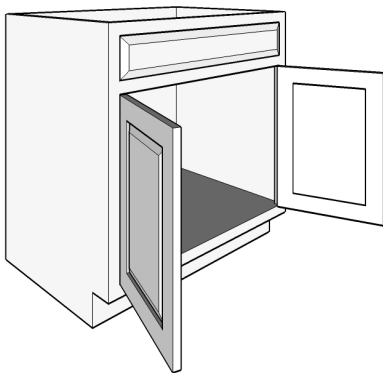
NO SHELF LEVELS
OPENING IS NOT DRILLED FOR SHELVES.

<u>Size Range</u>	Face Frame	Frameless
Width	*9” to 24”	*9” to 24”
Height	20 ¼” to 42”	20 ¼” to 42”
Depth	15” to 30”	15” to 30”

*Cabinets at or near minimum may require modifications to door or drawer.

**Vanity Sink Base
2 Butt Doors – 1 False Head**

VS2DBD

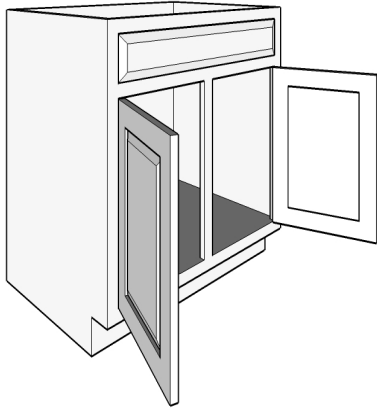


NO SHELF LEVELS,
OPENING IS NOT DRILLED FOR SHELVES.

<u>Size Range</u>	Face Frame	Frameless
Width	*19” to 52 ½”	*19” to 52 ½”
Height	20 ¼” to 42”	20 ¼” to 42”
Depth	15” to 30”	15” to 30”

*Cabinets at or near minimum may require modifications to door or drawer.

NOT AVAILABLE IN FRAMELESS



NO SHELF LEVELS,
OPENING IS NOT DRILLED FOR SHELVES.

Vanity Sink Base 2 Doors, Center Stile, 1 False Head

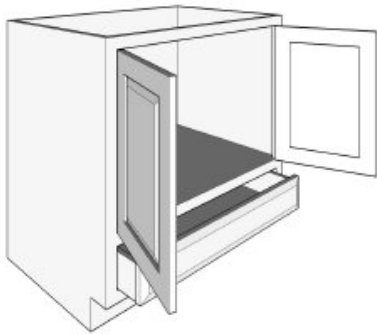
VS2D

<u>Size Range</u>	Face Frame	Frameless
Width	*21” to 51”	*21” to 51”
Height	20 ¼” to 42”	*20 ¼” to 42”
Depth	15” to 30”	15” to 30”

*Cabinets at or near minimum
may require modifications to door or drawer.

Vanity Inverted Base Sink 2 Doors, Butt Doors, 1 Drawer

VSRVBD



NO SHELF LEVELS,
OPENING IS NOT DRILLED FOR SHELVES.

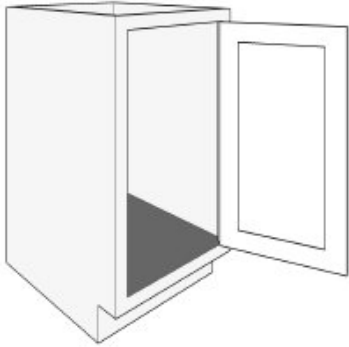
<u>Size Range</u>	Face Frame	Frameless
Width	*21” to 42”	21” To 42”
Height	20 ¼” to 42”	20 ¼” To 42”
Depth	15” to 30”	15” To 30”

* Cabinets at or near minimum may
require modifications to door framing.

Verify to see if Obstruction Cut Out is needed
in Drawer Box for Plumbing.
Modification +OBSCOD

Vanity Sink Base Full Door 1 Door

VSFD1D



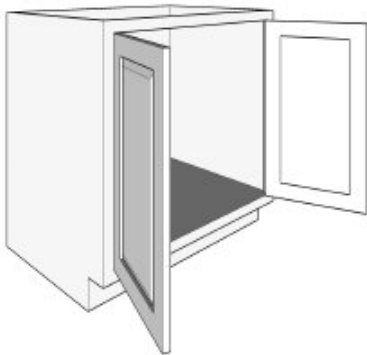
NO SHELF LEVELS,
OPENING IS NOT DRILLED FOR SHELVES.

<u>Size Range</u>	Face Frame	Frameless
Width	*6" to 26 3/8"	*6" to 26"
Height	*12" to 48 3/8"	*11 5/8" to 48"
Depth	6" to 30"	6" to 30"

*Cabinets at or near minimum
may require modifications to door framing.

Vanity Sink Base Full Door 2 Doors, Butt Doors

VSFD2DBD

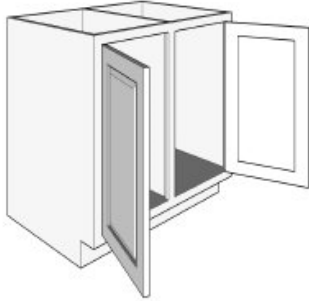


NO SHELF LEVELS,
OPENING IS NOT DRILLED FOR SHELVES.

<u>Size Range</u>	Face Frame	Frameless
Width	*18" to 48"	*18" to 48"
Height	20 1/4" to 40 1/2"	20 1/4" to 40 1/2"
Depth	15" to 30"	15" to 30"

*Cabinets at or near minimum
may require modifications to door framing.

NOT AVAILABLE IN FRAMELESS



NO SHELF LEVELS,
OPENING IS NOT DRILLED FOR SHELVES.

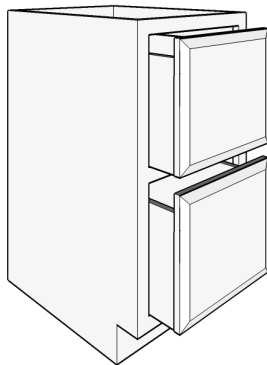
Center Divider Shown

Vanity Sink Base Full Door 2 Doors, Center Stile

VSFD2D

<u>Size Range</u>	Face Frame	Frameless
Width	*18" to 48"	*18" to 48"
Height	20 ¼" to 40 ½"	20 ¼" to 40 ½"
Depth	15" to 30"	15" to 30"

*Cabinets at or near minimum may require modifications to door framing.



Vanity Base 2 Drawers

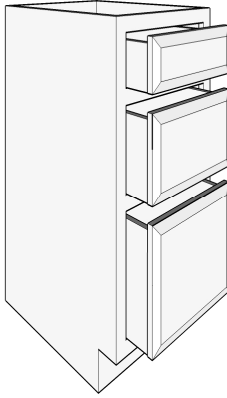
VD2

<u>Size Range</u>	Face Frame	Frameless
Width	*12" to 48"	*12" to 48"
Height	*12" to 34 ½"	*12" to 34 ½"
Depth	12" to 30"	12" to 30"

*Cabinets at or near minimum may require modifications to drawer framing.

Vanity Base 3 Drawers

VD3

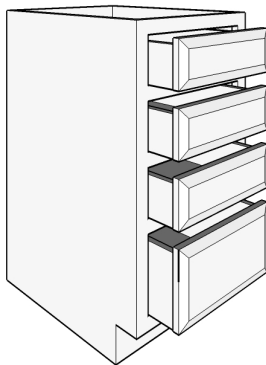


<u>Size Range</u>	Face Frame	Frameless
Width	*10" to 42"	*10" to 42"
Height	*30" to 42"	*30" to 42"
Depth	12" to 30"	12" to 30"

*Cabinets at or near minimum may require modifications to drawer framing.

Vanity Base 4 Drawers

VD4

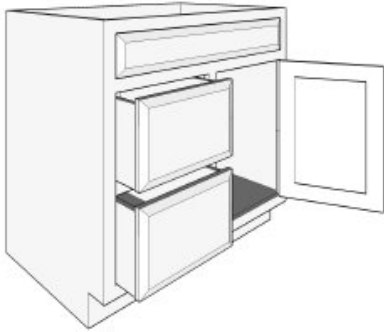


<u>Size Range</u>	Face Frame	Frameless
Width	*10" to 42"	*10" to 42"
Height	*30" to 42"	*30" to 42"
Depth	12" to 30"	12" to 30"

*Cabinets at or near minimum may require modifications to drawer framing.

**Vanity Sink Combo
1 Door, 2 Drawers on Left
1 False Front**

VCL



<u>Size Range</u>	Face Frame	Frameless
Width	*24" to 42"	*24" to 42"
Height	*30" to 42"	*30" to 42"
Depth	12" to 30"	12" to 30"

NO SHELF LEVELS,
OPENING IS NOT DRILLED FOR SHELVES.

*Cabinets at or near minimum may require modifications to door or drawer framing.

**Vanity Sink Combo
1 Door, 2 Drawers on Right
1 False Front**

VCR

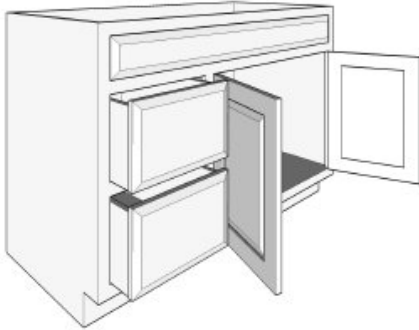
<u>Size Range</u>	Face Frame	Frameless
Width	*24" to 42"	*24" to 42"
Height	*30" to 42"	*30" to 42"
Depth	12" to 30"	12" to 30"

NO SHELF LEVELS,
OPENING IS NOT DRILLED FOR SHELVES.

*Cabinets at or near minimum may require modifications to door or drawer framing.

**Vanity Sink Combo 2 Doors
Butt Doors, 2 Drawers on Left
1 False Front**

VCLBD



<u>Size Range</u>	Face Frame	Frameless
Width	*42" to 51"	*42" to 51"
Height	*30" to 42"	*30" to 42"
Depth	12" to 30"	12" to 30"

NO SHELF LEVELS,
OPENING IS NOT DRILLED FOR SHELVES.

*Cabinets at or near minimum may require modifications to door or drawer framing.

**Vanity Sink Combo 2 Doors
Butt Doors, 2 Drawers on Right
1 False Head**

VCRBD

<u>Size Range</u>	Face Frame	Frameless
Width	*42" to 51"	*42" to 51"
Height	*30" to 42"	*30" to 42"
Depth	12" to 30"	12" to 30"

NO SHELF LEVELS,
OPENING IS NOT DRILLED FOR SHELVES.

*Cabinets at or near minimum may require modifications to door or drawer framing.

NOT AVAILABLE IN FRAMELESS



NO SHELF LEVELS,
OPENING IS NOT DRILLED FOR SHELVES.

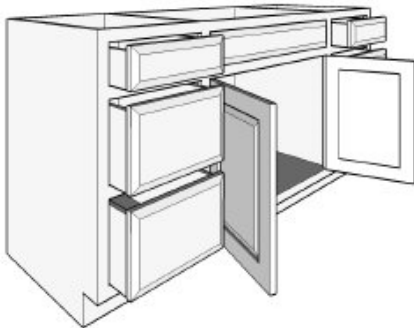
**Vanity Sink Combo 2 Sets Butt Doors
3 Drawers 2 False Fronts**

VC3D

<u>Size Range</u>	Face Frame	Frameless
Width	*57" to 72"	*57" to 72"
Height	*30" to 42"	*30" to 42"
Depth	12" to 30"	12" to 30"

*Cabinets at or near minimum may require modifications to door or drawer framing.

NOT AVAILABLE IN FRAMELESS



NO SHELF LEVELS,
OPENING IS NOT DRILLED FOR SHELVES.

**Vanity Sink Combo 2 Doors
Butt Doors, 6 Drawers
1 False Front**

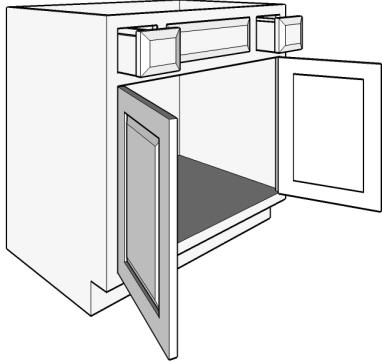
VC6D

<u>Size Range</u>	Face Frame	Frameless
Width	*48" to 72"	*48" to 72"
Height	*30" to 42"	*30" to 42"
Depth	12" to 30"	12" to 30"

*Cabinets at or near minimum may require modifications to door or drawer framing.

**Vanity Base Sink 2 Doors
Butt Doors, 2 Drawers,
1 False Head**

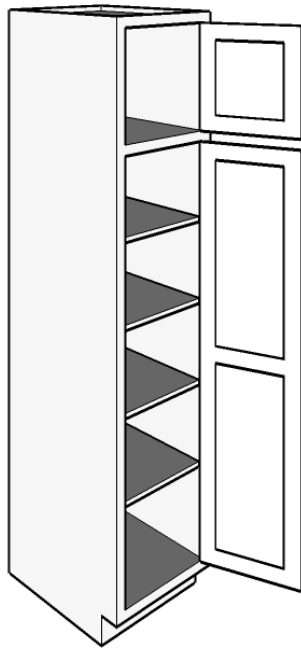
VBS



NO SHELF LEVELS,
OPENING IS NOT DRILLED FOR SHELVES.

<u>Size Range</u>	Face Frame	Frameless
Width	*36" to 51"	*36" to 51"
Height	*20 1/4" to 42"	*20 1/4" to 42"
Depth	12" to 30"	12" to 30"

*Cabinets at or near minimum may require modifications to door or drawer framing.

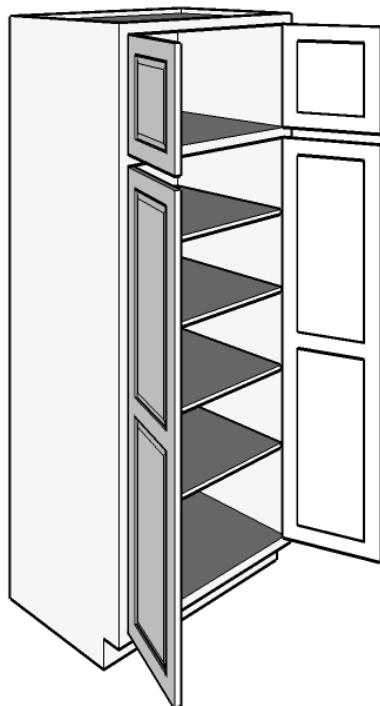


Tall Linen 2 Doors

VL

<u>Size Range</u>	Face Frame	Frameless
Width	*9" to 24"	*9" to 24"
Height	*72" to 108"	*72" to 108"
Depth	6" to 30"	6" to 30"

*Cabinets at or near minimum may require modifications to door framing.



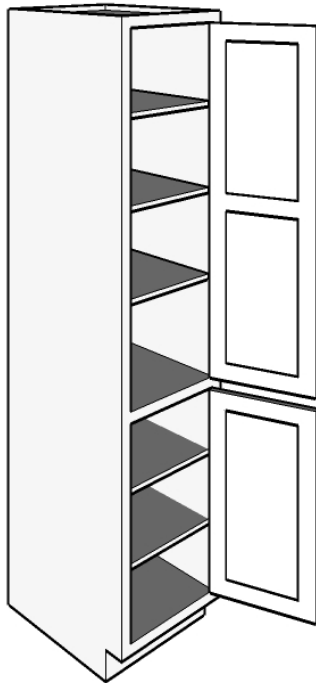
Tall Linen 2 Sets Butt Doors

VLBD

<u>Size Range</u>	Face Frame	Frameless
Width	*21" to 51"	*21" to 51"
Height	*72" to 108"	*72" to 108"
Depth	6" to 30"	6" to 30"

*Cabinets at or near minimum may require modifications to door framing.

Tall Linen Small Bottom Door 2 Doors

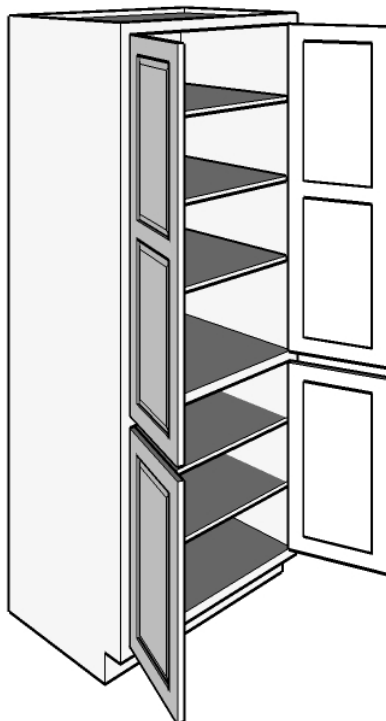


VLR

<u>Size Range</u>	Face Frame	Frameless
Width	*8" to 26 3/8"	*7 5/8" to 26"
Height	*72" to 108"	*72" to 108"
Depth	6" to 30"	6" to 30"

*Cabinets at or near minimum may require modifications to door framing.

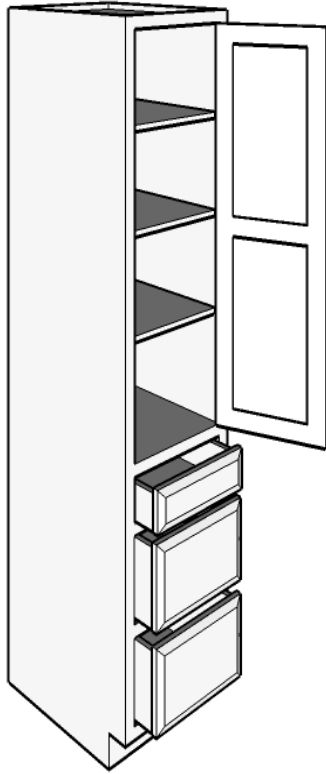
Tall Linen Small Bottom Doors 2 Sets Butt Doors



VLRBD

<u>Size Range</u>	Face Frame	Frameless
Width	*15 1/2" to 51"	*15 1/8" to 51"
Height	*72" to 108"	*72" to 108"
Depth	6" to 30"	6" to 30"

*Cabinets at or near minimum may require modifications to door framing.

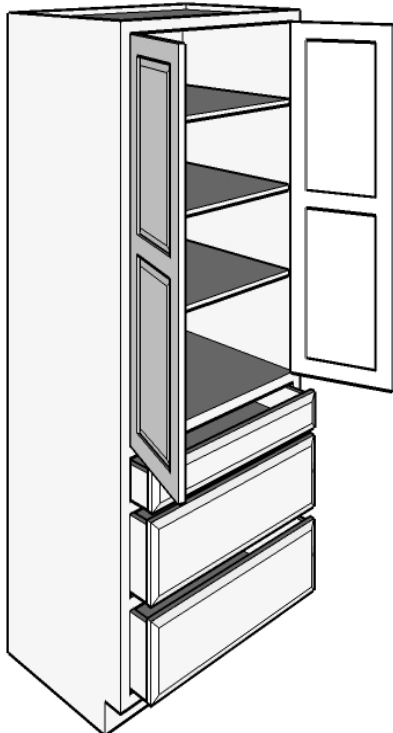


**Tall Linen 1 Door
3 Bottom Drawers**

VL3D

<u>Size Range</u>	Face Frame	Frameless
Width	*9" to 24"	*9" to 24"
Height	*72" to 108"	*72" to 108"
Depth	12" to 30"	12" to 30"

*Cabinets at or near minimum may require modifications to door or drawer framing.

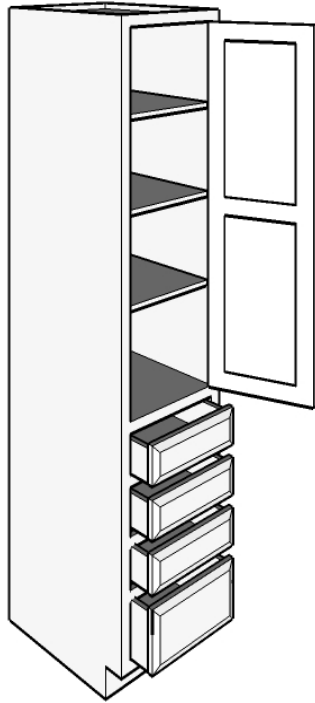


**Tall Linen Butt Doors
3 Drawers**

VLBD3D

<u>Size Range</u>	Face Frame	Frameless
Width	*21" to 42"	*21" to 42"
Height	*72" to 108"	*72" to 108"
Depth	12" to 30"	12" to 30"

*Cabinets at or near minimum may require modifications to door or drawer.

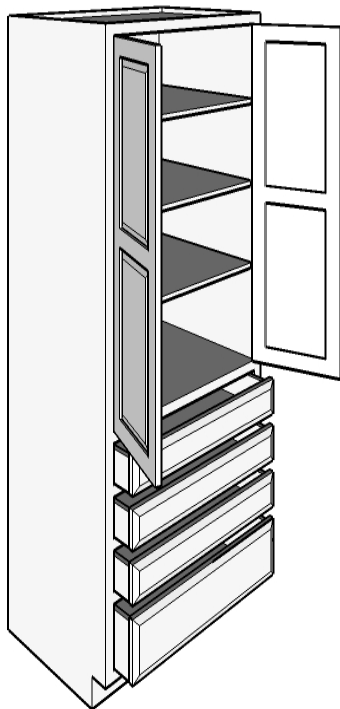


**Tall Linen 1 Door
4 Bottom Drawers**

VL4D

<u>Size Range</u>	Face Frame	Frameless
Width	*9” to 24”	*9” to 24”
Height	*72” to 108”	*72” to 108”
Depth	12” to 30”	12” to 30”

*Cabinets at or near minimum may require modifications to door or drawer framing.



**Tall Linen Butt Doors
4 Drawers**

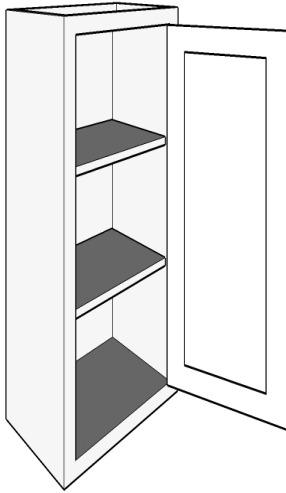
VLBD4D

<u>Size Range</u>	Face Frame	Frameless
Width	*21” to 42”	*21” to 42”
Height	*72” to 108”	*72” to 108”
Depth	12” to 30”	12” to 30”

*Cabinets at or near minimum may require modifications to door or drawer framing.

Medicine Cabinet

VW

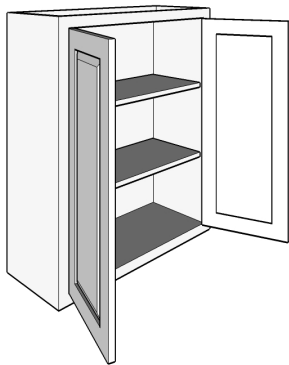


<u>Size Range</u>	Face Frame	Frameless
Width	*9" to 24"	*9" to 24"
Height	*18" to 48"	*18" to 48"
Depth	3" to 18"	3" to 18"

*Cabinets at or near minimum may require modifications to door framing.

Medicine Cabinet Butt Doors

VWBD



<u>Size Range</u>	Face Frame	Frameless
Width	*21" to 48"	*21" to 48"
Height	*18" to 48"	*18" to 48"
Depth	3" to 18"	3" to 18"

*Cabinets at or near minimum may require modifications to door framing.

NOT AVAILABLE IN FRAMELESS

Medicine Cabinet Recessed

VWR

<u>Size Range</u>	Face Frame	Frameless
Width	*9" to 24"	N/A
Height	*18" to 48"	N/A
Depth	3" to 18"	N/A

*Cabinets at or near minimum may require modifications to door framing.

Box is $\frac{3}{4}$ " less than frame on all sides.

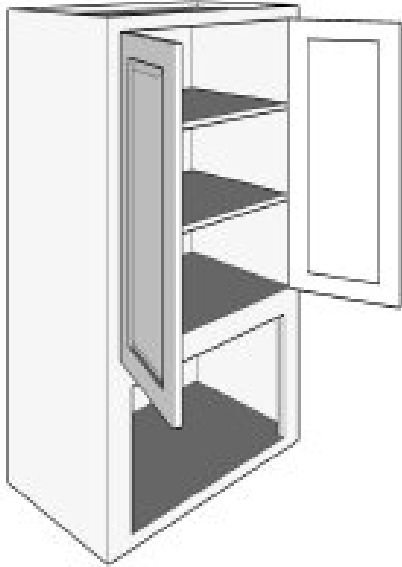
**Medicine Cabinet Recessed
Butt Doors**

VWRBD

<u>Size Range</u>	Face Frame	Frameless
Width	*21" to 48"	N/A
Height	*18" to 48"	N/A
Depth	3" to 18"	N/A

*Cabinets at or near minimum may require modifications to door framing.

Box is $\frac{3}{4}$ " less than frame on all sides.



**Toilet Topper Butt Doors
over Open Finished Below**

VWTTBD

<u>Size Range</u>	Face Frame	Frameless
Width	*21" to 48"	*21" to 48"
Height	*18" to 48"	*18" to 48"
Depth	3" to 18"	3" to 18"

*Cabinets at or near minimum may require modifications to door framing.

Bottom Section is finished to match doors.

Top Interior finished Natural matching specie.

Framed Mirror

MIRROR-MDSF

<u>Size Range</u>	Face Frame	Frameless
Width	18" to 96"	18" to 96"
Height	18" to 78"	18" to 78"
Depth	3/4"	3/4"